

Holdere

A Modern Estate Agent



253 Knightthorpe Road, Loughborough, LE11 4JS

£174,995

Holdere Estate Agents are delighted to bring to market with NO UPWARD CHAIN this spacious and modern one bedroom bungalow on an attractive elevated position with open views to the front. Available for ages 55 and over. The property has been freshly decorated throughout, complete with new carpets and kitchen. In brief the accommodation offers an entrance hallway, bedroom, lounge, newly fitted kitchen and bathroom.

Summary

Immaculately presented, this well-appointed home offers generous space and modern comforts throughout. The property opens into a welcoming entrance hallway, which leads you into a bright lounge featuring a contemporary, electric fire with a stylish surround, creating a focal point for relaxing evenings.

The newly fitted kitchen/diner is a standout feature, designed for both everyday living and entertaining. It showcases sleek grey cabinetry, ample wall and base units providing plentiful storage and work surface space. Integrated electric oven, integrated induction hob with stainless steel extractor hood over as well as provisions for additional appliances as needed. A handy pantry cupboard adds valuable extra storage, while the overall layout promotes sociable dining and easy daily meal preparation.

A well proportioned bedroom offers fitted wardrobes, providing generous storage without compromising space. The modern main bathroom is equipped with a white suite and an appealing "P"-shaped bath, complemented by an electric shower over the bath. Additional fittings include a heated towel rail, vanity cupboard, WC, and a wash hand basin, delivering both practicality and a contemporary aesthetic.

Outside, the property benefits from a pleasant rear garden featuring a paved patio area ideal for alfresco dining or sun lounging, together with a well-stocked border that adds colour and year-round interest. There are two sizeable outhouses, each equipped with power and light, offering versatile storage or workspace options.

Further highlights include gas-fired central heating from a fitted boiler and double glazing throughout, ensuring warmth and efficiency. The property also benefits from allocated parking, plus the home has been newly redecorated, providing a fresh, move-in-ready interior.

Disclaimer

1. Intending purchasers will be asked to produce identification documentation.
2. While we endeavour to make our sales particulars fair, accurate, and reliable, they are only a general guide to the property.
3. The measurements indicated are supplied for guidance only and, as such, must be considered incorrect.
4. Please note we have not tested the services or any of the equipment or appliances in this property;

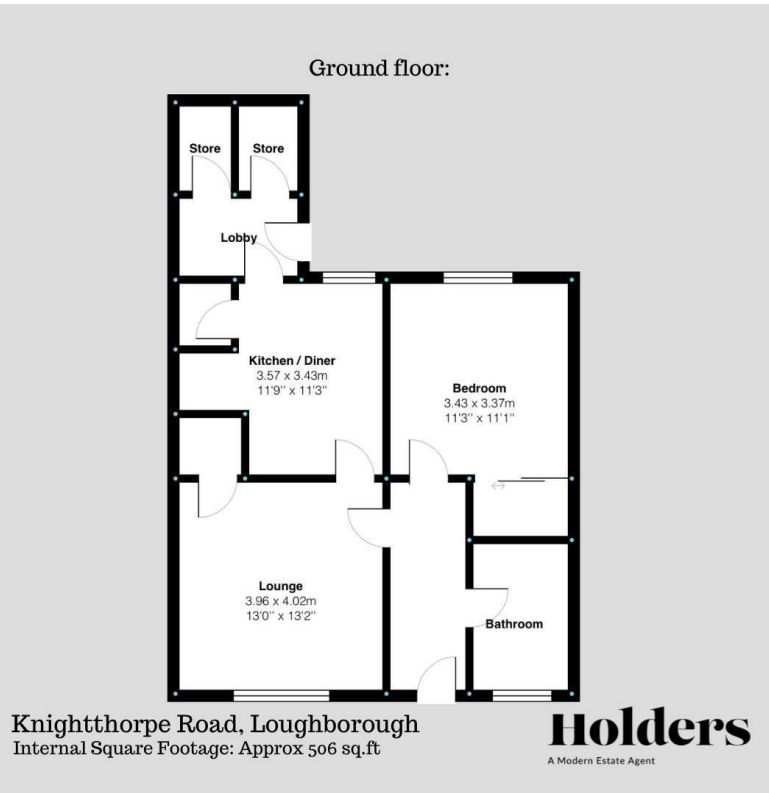
accordingly, we strongly advise prospective buyers to commission their survey or service reports before finalising their offer to purchase.

5. These particulars are issued in good faith but do not constitute representations of fact or form part of any offer or contract. The matters referred to in these particulars should be independently verified by prospective buyers. Neither Holders Estate Agents nor its agents have any authority to make or give any representation or warranty concerning this property.

Extra Information

To check Internet and Mobile Availability please use the following link: checker.ofcom.org.uk/engb/broadband-coverage To check Flood Risk please use the following link: check-long-term-flood-risk.service.gov.uk/postcode

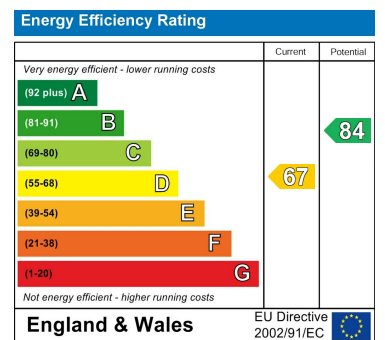
Floor Plan



Area Map



Energy Efficiency Graph



These particulars, whilst believed to be accurate are set out as a general outline only for guidance and do not constitute any part of an offer or contract. Intending purchasers should not rely on them as statements of representation of fact, but must satisfy themselves by inspection or otherwise as to their accuracy. No person in this firm's employment has the authority to make or give any representation or warranty in respect of the property.