

## A Modern Estate Agent



£245,000

Discover this beautifully presented, spacious home nestled in a highly sought-after residential area. Located on the desirable Pritchard Drive, this property boasts an inviting and airy atmosphere, thanks to its generous room proportions and large windows that flood the interior with natural light. Meticulously maintained and thoughtfully designed, the home offers a perfect blend of comfort and elegance, making it an ideal choice for a variety of buyers.

## **Summary**

Ideal for your first home, this modern semi-detached house property situated in a tucked away cul de sac location. This nicely presented home includes entrance hall with guest cloakroom, dining kitchen with integrated appliances, lounge, three bedrooms, master with en suite facilities, family bathroom, driveway offering ample off road parking and private garden to the rear. An ideal first purchase, viewing is highly recommended.

Kegworth is a large village lying on the River Soar, it is situated on the A6 near junction 24 of the M1 motorway and is also close to East Midlands Airport and Parkway main line railway station. The village is served by a primary school which has both Anglican and Baptist churches. Beyond the primary school age, most children attend schools in Castle Donington and Shepshed. Shops in the village include a supermarket, butcher, pharmacy, post office and optician. There are a number of cafes, restaurants and takeaway food outlets. Kegworth has several public houses, a doctor's surgery and a village hall that hosts events. Kegworth has thriving sports clubs. There are two parks with play areas for younger children. The village has a library and a museum of local history.

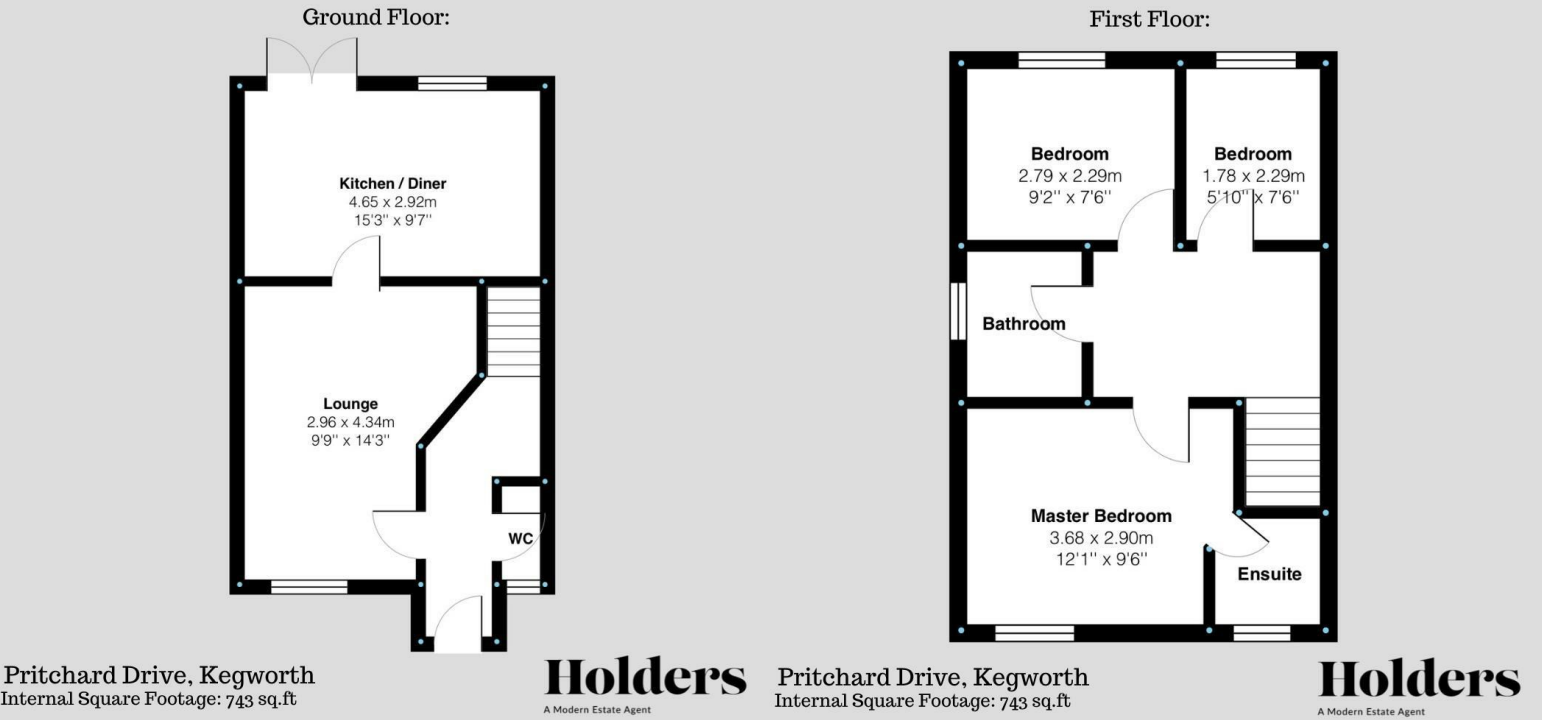
## **Disclaimer**

1. Intending purchasers will be asked to produce identification documentation.
2. While we endeavour to make our sales particulars fair, accurate, and reliable, they are only a general guide to the property.
3. The measurements indicated are supplied for guidance only and, as such, must be considered incorrect.
4. Please note we have not tested the services or any of the equipment or appliances in this property; accordingly, we strongly advise prospective buyers to commission their survey or service reports before finalising their offer to purchase.
5. These particulars are issued in good faith but do not constitute representations of fact or form part of any offer or contract. The matters referred to in these particulars should be independently verified by prospective buyers. Neither Holders Estate Agents nor its agents have any authority to make or give any representation or warranty concerning this property.

## **Extra information**

To check Internet and Mobile Availability please use the following link: [checker.ofcom.org.uk/en-gb/broadband-coverage](https://checker.ofcom.org.uk/en-gb/broadband-coverage) To check Flood Risk please use the following link: [check-long-term-flood-risk.service.gov.uk/postcode](https://check-long-term-flood-risk.service.gov.uk/postcode)

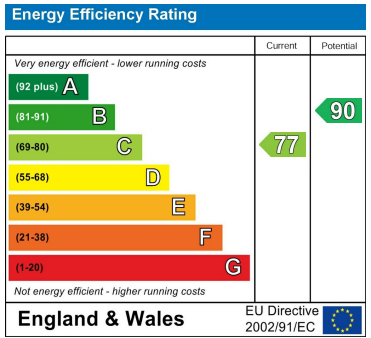
Floor Plan



Area Map



Energy Efficiency Graph



These particulars, whilst believed to be accurate are set out as a general outline only for guidance and do not constitute any part of an offer or contract. Intending purchasers should not rely on them as statements of representation of fact, but must satisfy themselves by inspection or otherwise as to their accuracy. No person in this firms employment has the authority to make or give any representation or warranty in respect of the property.