

# Holdings

A Modern Estate Agent



8 Milton Street, Loughborough, LE11 5JZ

£240,000

A deceptively spacious and well-arranged three-bedroom semi detached home, ideally positioned on Milton Street, close to Loughborough town centre and a wide range of local amenities.

## **Summary**

The property offers generous accommodation across two floors, making it an excellent opportunity for first-time buyers, families or investors alike. Upon entering, you are welcomed into a front lounge featuring a bay window, creating a bright and inviting living space. Beyond this, a separate reception/dining room provides a versatile second living area, ideal for entertaining or family use. Leading from here is a useful conservatory providing access to the rear garden.

The kitchen is fitted with a range of units and offers ample space for appliances, with access through to the garden.

To the first floor, the property benefits from three well-proportioned bedrooms. The principal bedroom is a comfortable double, with a second double bedroom and a further third bedroom, ideal as a nursery, home office or guest room. A family bathroom serves all bedrooms and is fitted with a modern suite.

Externally, the property enjoys an enclosed rear garden, offering a private outdoor space suitable for seating and entertaining leading to a large rear workshop.

With a versatile layout throughout, this home represents a fantastic opportunity in a sought-after and convenient location.

## **Disclaimer**

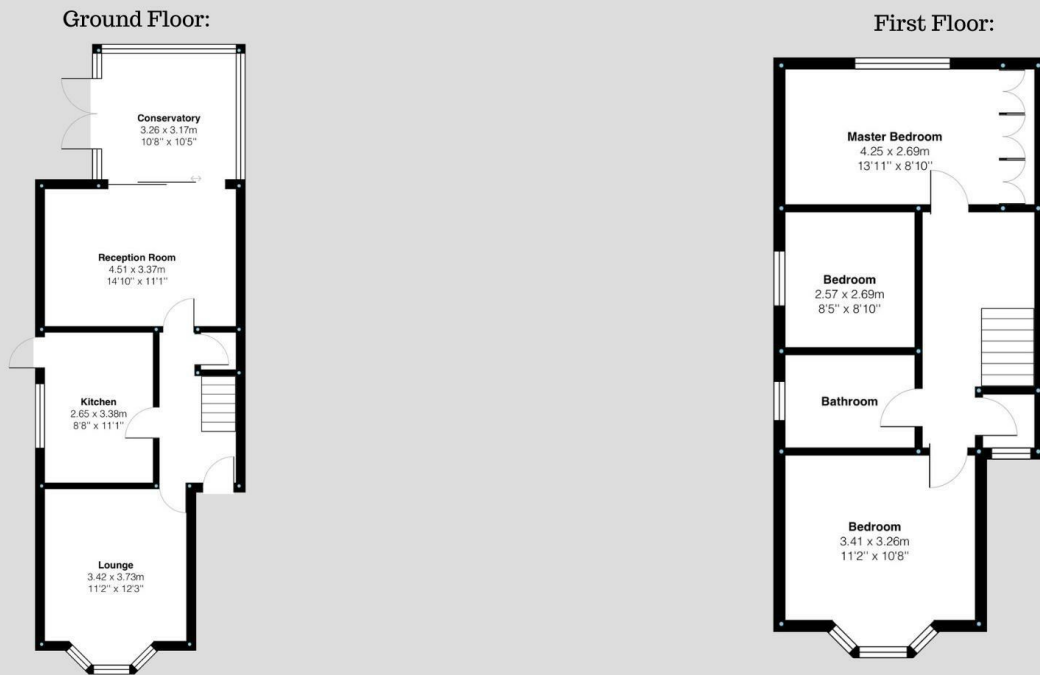
1. Intending purchasers will be asked to produce identification documentation.
2. While we endeavour to make our sales particulars fair, accurate, and reliable, they are only a general guide to the property.
3. The measurements indicated are supplied for guidance only and, as such, must be considered incorrect.
4. Please note we have not tested the services or any of the equipment or appliances in this property; accordingly, we strongly advise prospective buyers to commission their survey or service reports before finalising their offer to purchase.
5. These particulars are issued in good faith but do not constitute representations of fact or form part of any offer or contract. The matters referred to in these particulars should be independently verified by prospective buyers. Neither Holders Estate Agents nor its agents have any authority to make

or give any representation or warranty concerning this property.

## **Extra Information**

To check Internet and Mobile Availability please use the following link: [checker.ofcom.org.uk/en-gb/broadband-coverage](http://checker.ofcom.org.uk/en-gb/broadband-coverage) To check Flood Risk please use the following link: [check-long-term-flood-risk.service.gov.uk/postcode](http://check-long-term-flood-risk.service.gov.uk/postcode)

# Floor Plan



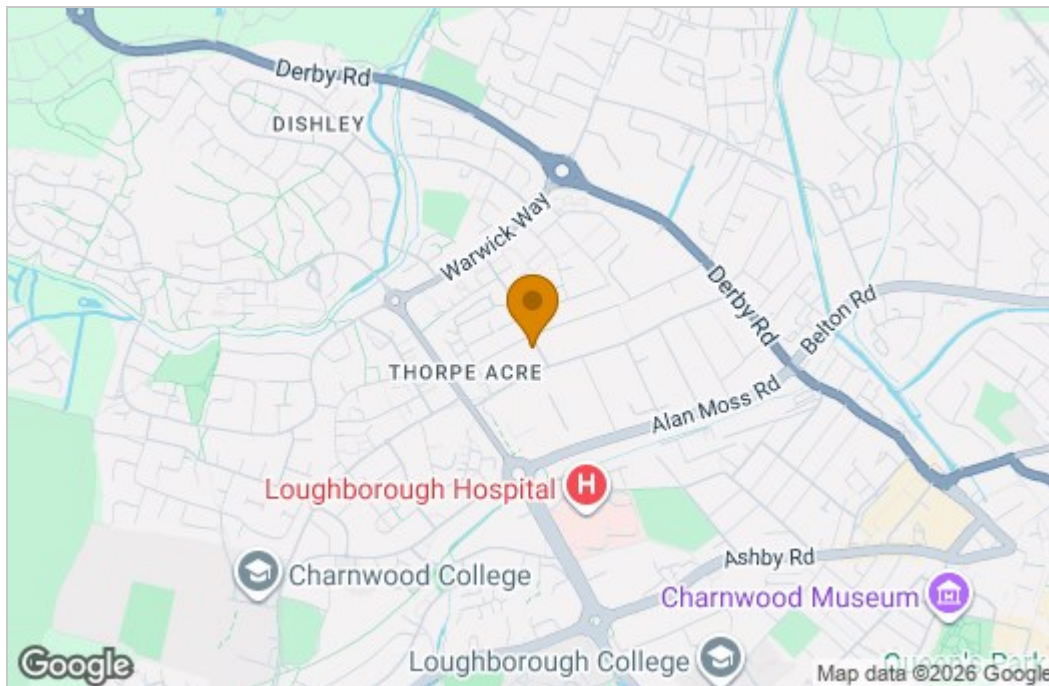
Milton Street, Loughborough  
Internal Square Footage: Approx 958 sq.ft

**Holdere**  
A Modern Estate Agent

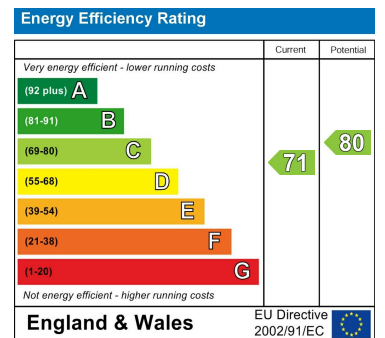
Milton Street, Loughborough  
Internal Square Footage: Approx 958 sq.ft

**Holdere**  
A Modern Estate Agent

# Area Map



# Energy Efficiency Graph



These particulars, whilst believed to be accurate are set out as a general outline only for guidance and do not constitute any part of an offer or contract. Intending purchasers should not rely on them as statements of representation of fact, but must satisfy themselves by inspection or otherwise as to their accuracy. No person in this firm's employment has the authority to make or give any representation or warranty in respect of the property.

9 Bedford Square, Loughborough, Leicestershire, LE11 2TP  
Tel: 01509 451100 Email: Rebecca@holdersestateagents.co.uk