

Holdings

A Modern Estate Agent



20 Moorfield Place, Loughborough, LE12 9AW

£299,950

A fantastic opportunity to acquire this stylish and individually designed three-bedroom detached family home, ideally positioned within a quiet cul-de-sac in the heart of Shepshed, offering convenient access to local amenities and reputable schools.

Summary

Beautifully improved by the current owner, the property boasts well-presented and contemporary accommodation throughout. The ground floor comprises a welcoming entrance hall, a modern breakfast kitchen fitted with a range of units and integrated appliances, and an impressive open-plan lounge/diner, perfect for both everyday living and entertaining, with patio doors opening onto the rear garden. A useful downstairs cloakroom and additional storage complete the ground floor.

To the first floor, the landing provides access to three well-proportioned bedrooms, including a generous principal bedroom benefitting from a stylish en-suite shower room. The remaining bedrooms are served by a modern re-fitted family bathroom, finished to a high standard.

Externally, the property enjoys a driveway providing off-road parking and access to a larger-than-average integral garage, offering excellent storage or further potential. To the rear, the beautifully re-landscaped garden creates a private and enclosed outdoor space, featuring patio seating areas, a well-maintained lawn, raised sections, and a composite decked area. There is also a composite-clad shed and an outdoor bar, making it an ideal setting for entertaining.

Further benefits include uPVC double glazing throughout and a recently installed boiler in 2025, enhancing both comfort and efficiency.

Disclaimer

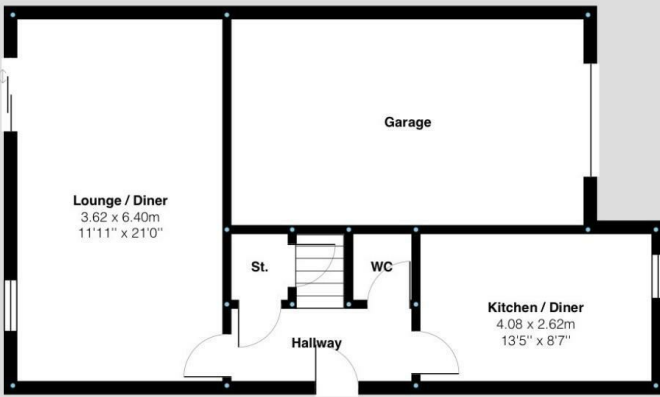
1. Intending purchasers will be asked to produce identification documentation.
2. While we endeavour to make our sales particulars fair, accurate, and reliable, they are only a general guide to the property.
3. The measurements indicated are supplied for guidance only and, as such, must be considered incorrect.
4. Please note we have not tested the services or any of the equipment or appliances in this property; accordingly, we strongly advise prospective buyers to commission their survey or service reports before finalising their offer to purchase.
5. These particulars are issued in good faith but do not constitute representations of fact or form part of any offer or contract. The matters referred to in these particulars should be independently verified by prospective buyers. Neither Holders Estate Agents nor its agents have any authority to make or give any representation or warranty concerning this property.

Extra Information

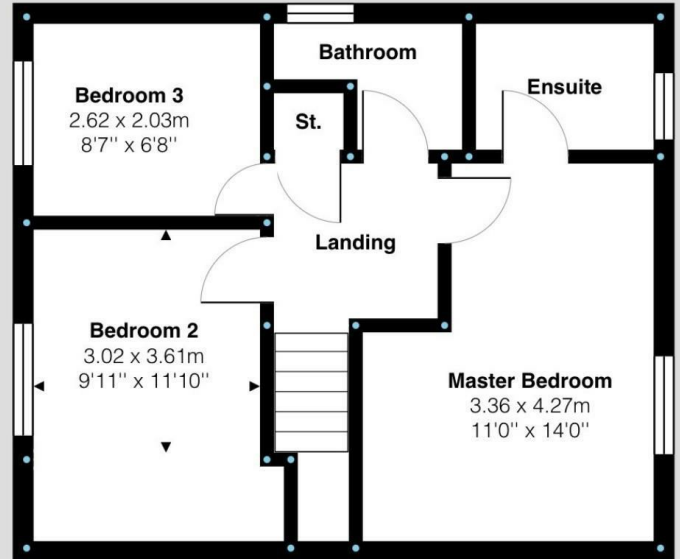
To check Internet and Mobile Availability please use the following link: checker.ofcom.org.uk/en-gb/broadband-coverage To check Flood Risk please use the following link: check-long-term-flood-risk.service.gov.uk/postcode

Floor Plan

Ground Floor:



First Floor:



Moorfield Place, Loughborough
Internal Square Footage: Approx 936 sq.ft

Holderr
A Modern Estate Agent

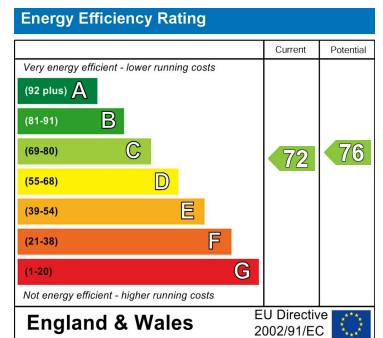
Moorfield Place, Loughborough
Internal Square Footage: Approx 936 sq.ft

Holderr
A Modern Estate Agent

Area Map



Energy Efficiency Graph



These particulars, whilst believed to be accurate are set out as a general outline only for guidance and do not constitute any part of an offer or contract. Intending purchasers should not rely on them as statements of representation of fact, but must satisfy themselves by inspection or otherwise as to their accuracy. No person in this firm's employment has the authority to make or give any representation or warranty in respect of the property.

9 Bedford Square, Loughborough, Leicestershire, LE11 2TP
Tel: 01509 451100 Email: Rebecca@holdersestateagents.co.uk