

Holdere

A Modern Estate Agent



160 Conway Drive, Loughborough, LE12 9PN

£250,000

Offered with no upward chain, this versatile three bedroom detached home on Conway Drive, Shepshed features a spacious lounge with bay window, fitted kitchen, ground floor bedroom and bathroom, with two further bedrooms and a WC to the first floor. Externally, the property benefits from a garage, driveway for up to three vehicles and a beautifully landscaped rear garden with patio areas, lawns and an attractive pond.

Summary

Offered to the market with no upward chain, this well-presented and versatile three bedroom home at Conway Drive, Shepshed, provides spacious accommodation ideally suited to a range of buyers.

The property benefits from a flexible layout with a ground floor bedroom alongside a family bathroom, making it particularly appealing for those seeking single-level living options or multi-generational accommodation. The ground floor also features a fitted kitchen and a spacious lounge with an attractive bay window, creating a bright and welcoming living space ideal for both relaxing and entertaining. To the first floor there are two further well-proportioned bedrooms together with a convenient WC.

Externally, the property continues to impress with a garage and driveway providing off-road parking for up to three vehicles. To the rear, the beautifully landscaped garden offers an excellent outdoor space to enjoy, featuring patio seating areas, well-maintained lawns and an attractive pond creating a peaceful setting.

Situated within a popular residential area of Shepshed, the home enjoys excellent access to local amenities, schools, transport links and nearby countryside walks. A fantastic opportunity to acquire a spacious and adaptable home in a convenient and well-connected location.

Disclaimer

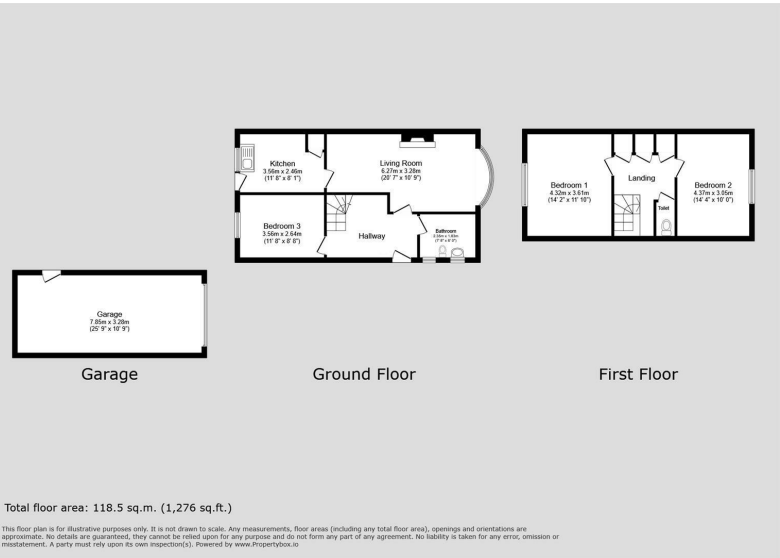
1. Intending purchasers will be asked to produce identification documentation.
2. While we endeavour to make our sales particulars fair, accurate, and reliable, they are only a general guide to the property.
3. The measurements indicated are supplied for guidance only and, as such, must be considered incorrect.
4. Please note we have not tested the services or any of the equipment or appliances in this property; accordingly, we strongly advise prospective buyers to commission their survey or service reports before finalising their offer to purchase.
5. These particulars are issued in good faith but do not constitute representations of fact or form part of any offer or contract. The matters referred to in these particulars should be independently verified by prospective buyers. Neither Holders Estate Agents nor its agents have any authority to make

or give any representation or warranty concerning this property.

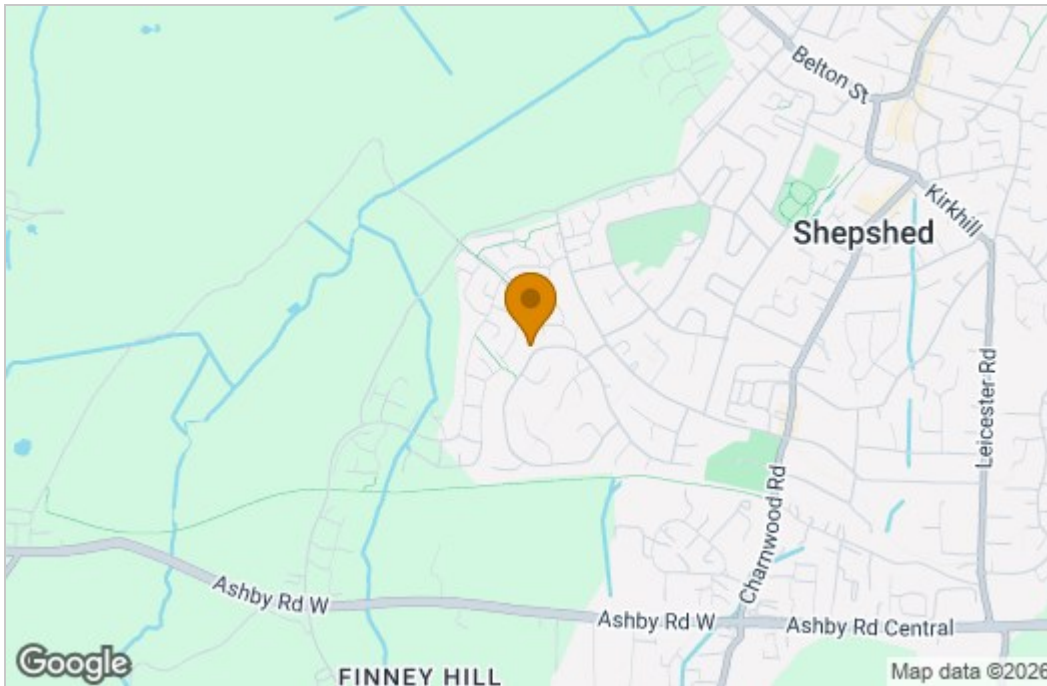
Extra Information

To check Internet and Mobile Availability please use the following link: checker.ofcom.org.uk/en-gb/broadband-coverage To check Flood Risk please use the following link: check-long-term-flood-risk.service.gov.uk/postcode

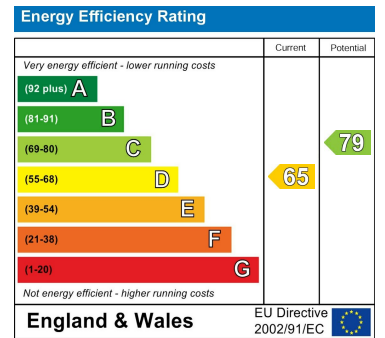
Floor Plan



Area Map



Energy Efficiency Graph



These particulars, whilst believed to be accurate are set out as a general outline only for guidance and do not constitute any part of an offer or contract. Intending purchasers should not rely on them as statements of representation of fact, but must satisfy themselves by inspection or otherwise as to their accuracy. No person in this firm's employment has the authority to make or give any representation or warranty in respect of the property.

1 Field Street, Shepshed, LE12 9AL
 Tel: 01509n 451100 Email: hello@holdersstateagents.co.uk