



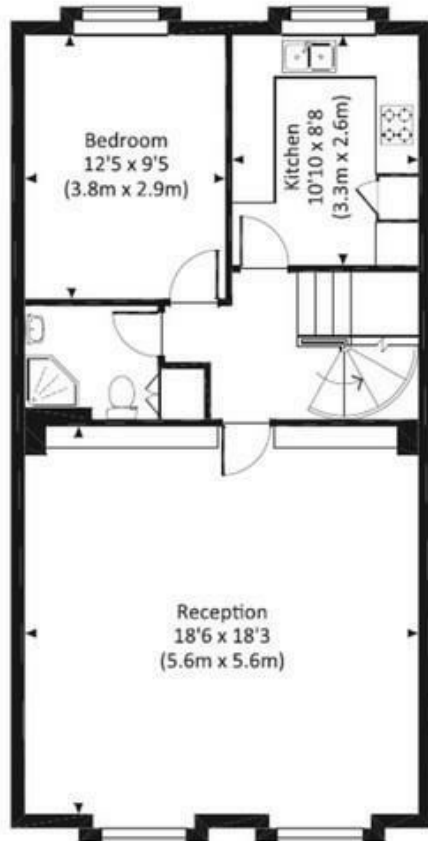
**3 Bed  
Flat  
located in Notting  
Hill**

£1,450,000

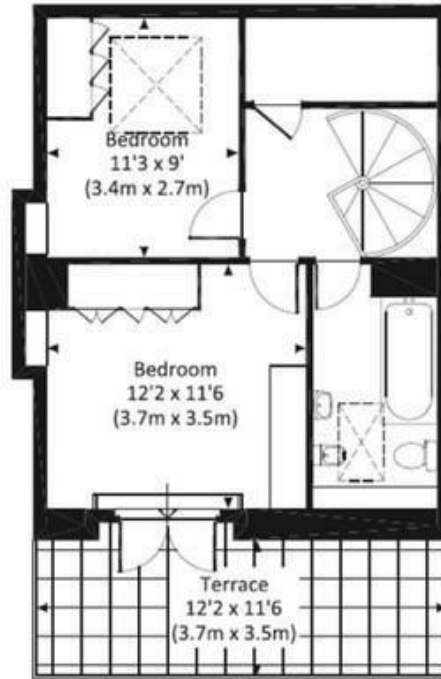


# Elgin Crescent, W11

Approx. Gross Internal Area 1171 SQFT / 108.8 SQM  
 Floor Plan for identification purposes only - not to scale



THIRD FLOOR



FOURTH FLOOR



## DIRECTIONS

## CONTACT

12, Suite 3 Portman Close  
 London  
 W1H 6BR

E: [info@waterb.com](mailto:info@waterb.com)  
 T: 02074871355

Energy Efficiency Rating		
	Current	Potential
Very energy efficient - lower running costs		
(92 plus) <b>A</b>		
(81-91) <b>B</b>		
(69-80) <b>C</b>		
(55-68) <b>D</b>		
(39-54) <b>E</b>		
(21-38) <b>F</b>		
(1-20) <b>G</b>		
Not energy efficient - higher running costs		
EU Directive 2002/91/EC		
England & Wales		

