



2 Bed  
Flat - Purpose Built  
located in

£1,250,000



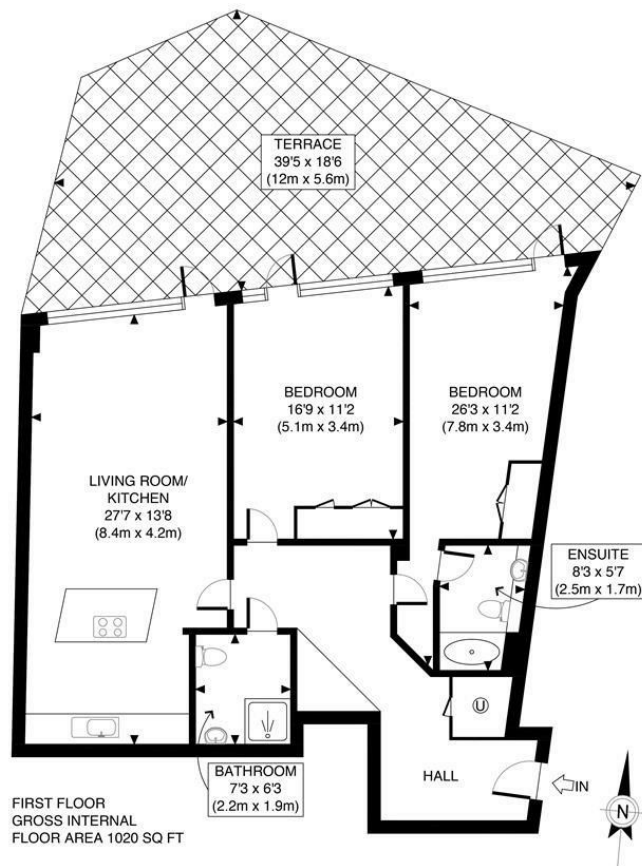
**WATERBRIDGE**  
ESTATES

## DIRECTIONS

## CONTACT

12, Suite 3 Portman Close  
London  
W1H 6BR

E: [info@waterb.com](mailto:info@waterb.com)  
T: 02074871355



APPROX. GROSS INTERNAL FLOOR AREA 1020 SQ FT / 95 SQM	<b>Praed St</b>
Disclaimer: Floor plan measurements are approximate and are for illustrative purposes only. While we do not doubt the floor plan accuracy and completeness, you or your advisors should conduct a careful, independent investigation of the property in respect of monetary valuation	date 15/05/24
	<b>photoplan</b>

