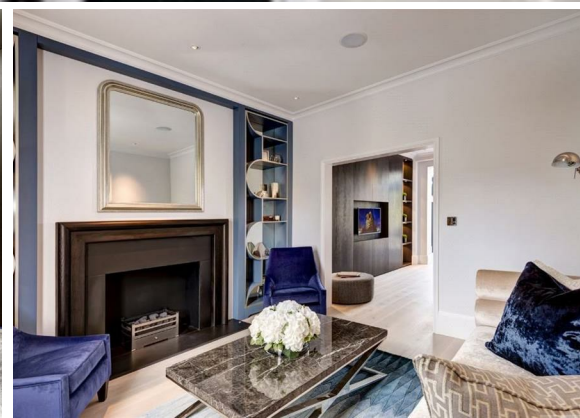


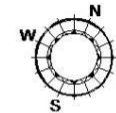


**5 Bed
House - Mid
Terrace
located in**

£3,950 Per month



PEMBROKE SQUARE



-  = SKYLIGHT / ROOF WINDOW
-  = REDUCED HEADROOM BELOW 1.5M / 50

THIS PLAN HAS BEEN DRAWN FROM SUPPLIED PLANS, STRICTLY FOR USE AS A GUIDE ONLY
 APPROXIMATE GROSS INTERNAL AREA
 BASEMENT = 467 SQ. FT. (43.3 SQ. M.)
 LOWER GROUND FLOOR = 1416 SQ. FT. (131.6 SQ. M.)
 (INCLUDING PLANT ROOM)
 GROUND FLOOR = 986 SQ. FT. (91.6 SQ. M.)
 FIRST FLOOR = 893 SQ. FT. (83 SQ. M.)
 SECOND FLOOR = 554 SQ. FT. (51.4 SQ. M.)
 THIRD FLOOR / REDUCED HEADROOM / EAVES
 480 SQ. FT. (44.1 SQ. M.)
 TOTAL = 4796 SQ. FT. (445 SQ. M.)



CONTACT

12, Suite 3 Portman Close
 London
 W1H 6BR

E: info@waterb.com
 T: 02074871355

