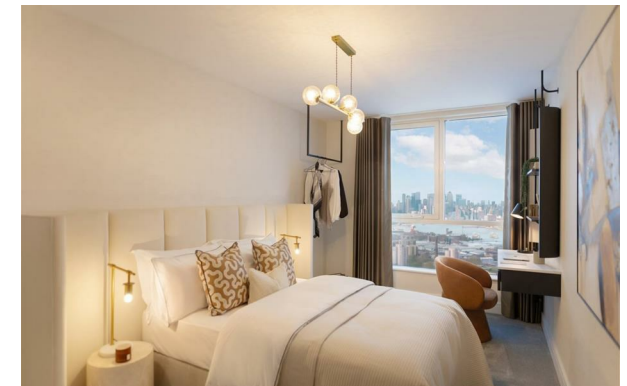


Hammonds



17 Wandsworth Mills, Wandsworth, SW18 1TH

£1,220,000

- Spacious 2 bedrooms
- 1 reception room
- Contemporary design
- Viewing recommended
- Modern 1 bathroom
- Built in 2026
- Ideal for families
- New build house
- 1,010 sq ft area
- Close to amenities

57 Bow Rd, London, E3 2AD
02089802226

sales@hammonds-estates.co.uk
www.hammonds-estates.co.uk

Directions

Viewings

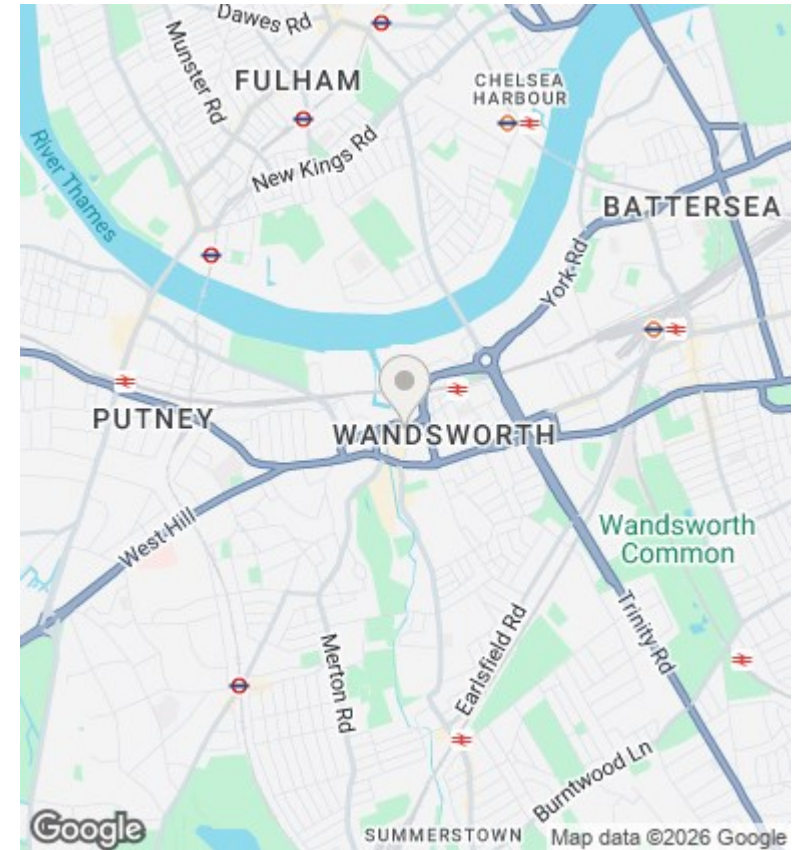
Viewings by arrangement only. Call 02089802226 to make an appointment.

Council Tax Band

C

EPC Rating:

B



Energy Efficiency Rating		Current	Potential
<i>Very energy efficient - lower running costs</i>			
(92 plus) A			
(81-91) B		82	
(69-80) C			
(55-68) D			
(39-54) E			
(21-38) F			
(1-20) G			
<i>Not energy efficient - higher running costs</i>			
England & Wales		EU Directive 2002/91/EC	