

Hammonds



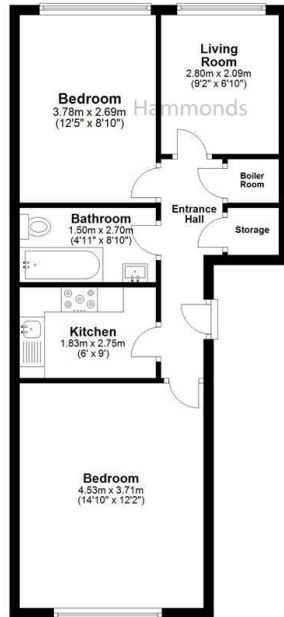
Flat 45 5 Rossetti Road, London, SE16 3EY

£1,750 PCM

- Great Location
- Two Double Bedrooms
- Close To Station
- Natural Lighting
- Local Amenities Nearby
- Potential for Home Office

57 Bow Rd, London, E3 2AD
02089802226

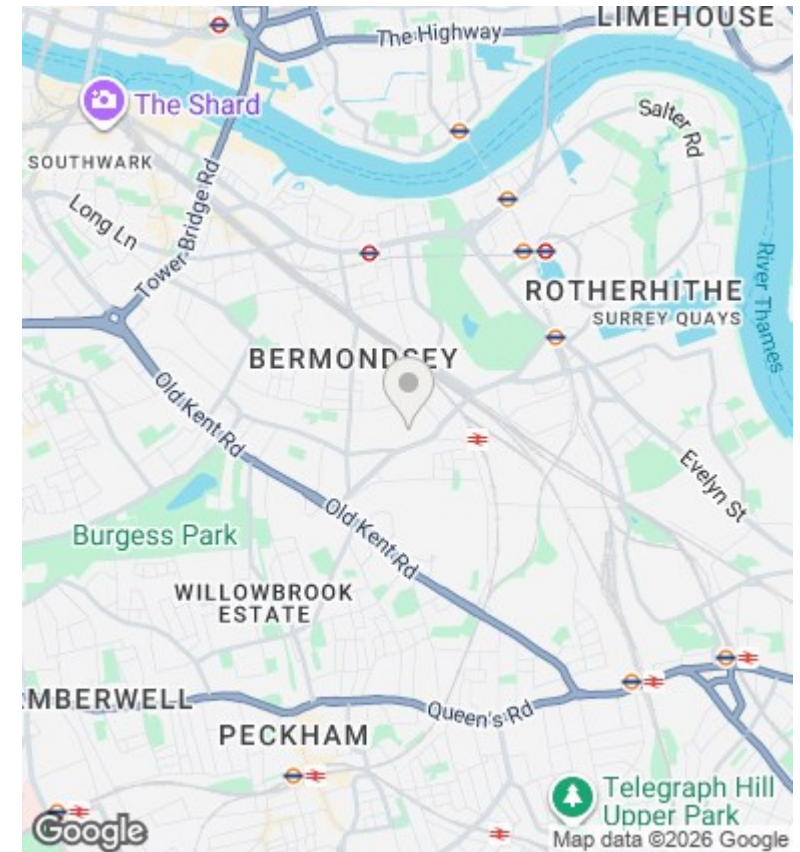
Lettings@hamondsestates.co.uk
www.hammonds-estates.co.uk



Hammonds

Plan produced for HAMMONDS Estate Agent

Evolve This floor plan is for illustrative purposes only. Floor areas including total floor area openings are approximate. TOTAL FLOOR AREA **50** meters **144** sq feet



Directions

Viewings

Viewings by arrangement only. Call 02089802226 to make an appointment.

Council Tax Band

D

EPC Rating:

C

Energy Efficiency Rating		
	Current	Potential
<i>Very energy efficient - lower running costs</i>		
(92 plus) A		
(81-91) B		
(69-80) C	76	78
(55-68) D		
(39-54) E		
(21-38) F		
(1-20) G		
<i>Not energy efficient - higher running costs</i>		
England & Wales	EU Directive 2002/91/EC	