

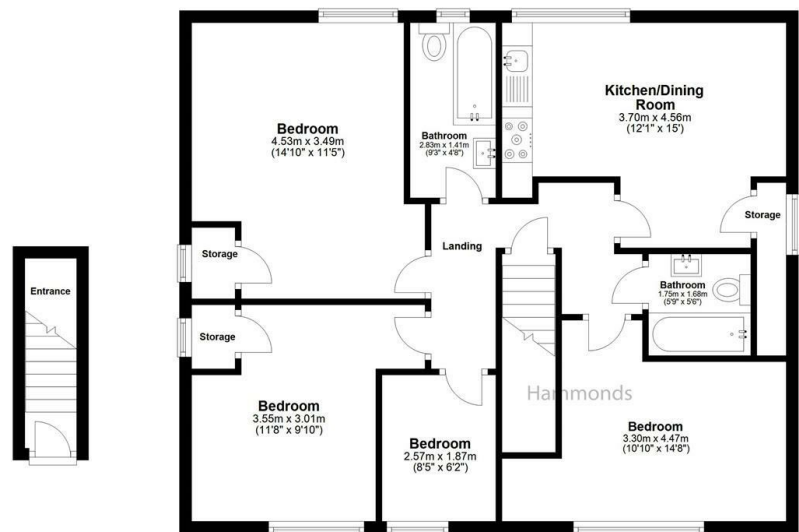
Hammonds



Flat 6 Elizabeth Frye House 585 Barking Road, London, London, E13

£2,400 PCM

- Brand new flat
- close to underground/DLR Stations
- Fitted Kitchen
- Communal garden
- Close to Shops
- Double Glazing



GROUND FLOOR

FIRST FLOOR

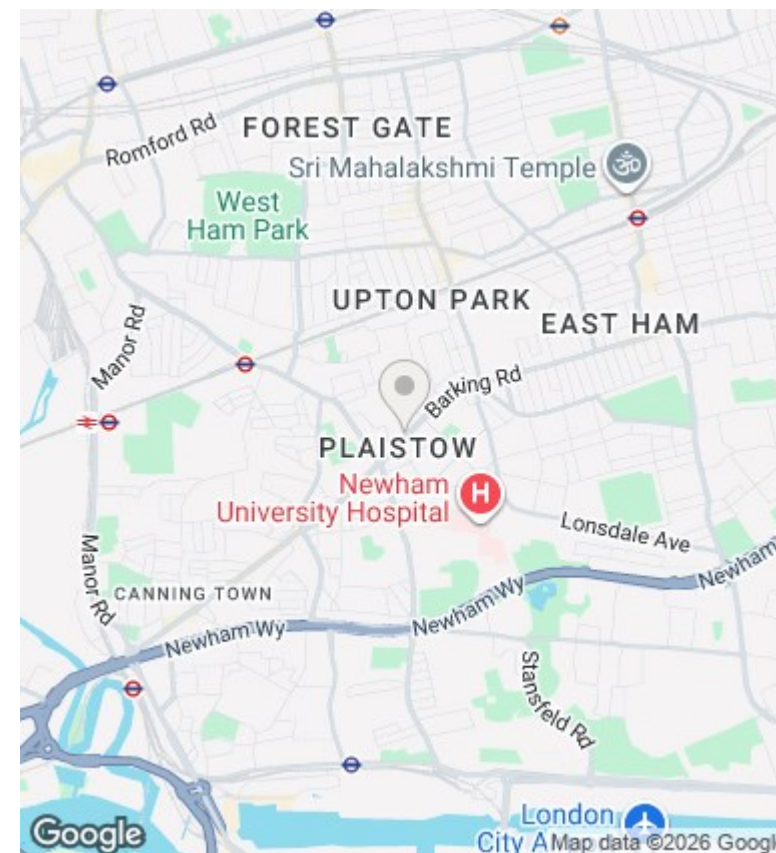
Hammonds

Plan produce for HAMMONDS Estate Agent



This floor plan is for illustrative purposes only. Floor areas (including total floor area) openings are approximate.

| | | |
|------------------|------------|-------|
| TOTAL FLOOR AREA | Sq. meters | 73.5 |
| | Sq. feet | 791.5 |



Directions

Viewings

Viewings by arrangement only. Call 02089802226 to make an appointment.

Council Tax Band

EPC Rating:

| Energy Efficiency Rating | | |
|--|-------------------------|-----------|
| | Current | Potential |
| <i>Very energy efficient - lower running costs</i> | | |
| (92 plus) A | | |
| (81-91) B | | |
| (69-80) C | | |
| (55-68) D | | |
| (39-54) E | | |
| (21-38) F | | |
| (1-20) G | | |
| <i>Not energy efficient - higher running costs</i> | | |
| England & Wales | EU Directive 2002/91/EC | |