

# Hammonds



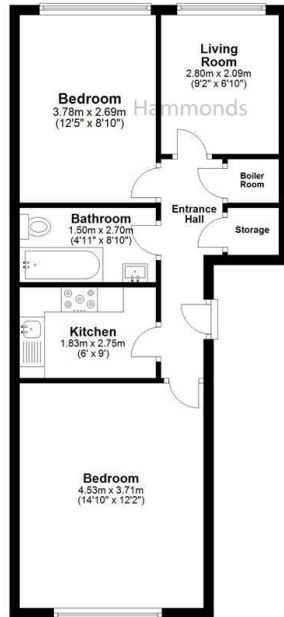
Flat 45 5 Rossetti Road, London, SE16 3EY

£1,800 PCM

- Great Location
- Two Double Bedrooms
- Close To Station
- Natural Lighting
- Local Amenities Nearby
- Potential for Home Office

57 Bow Rd, London, E3 2AD  
02089802226

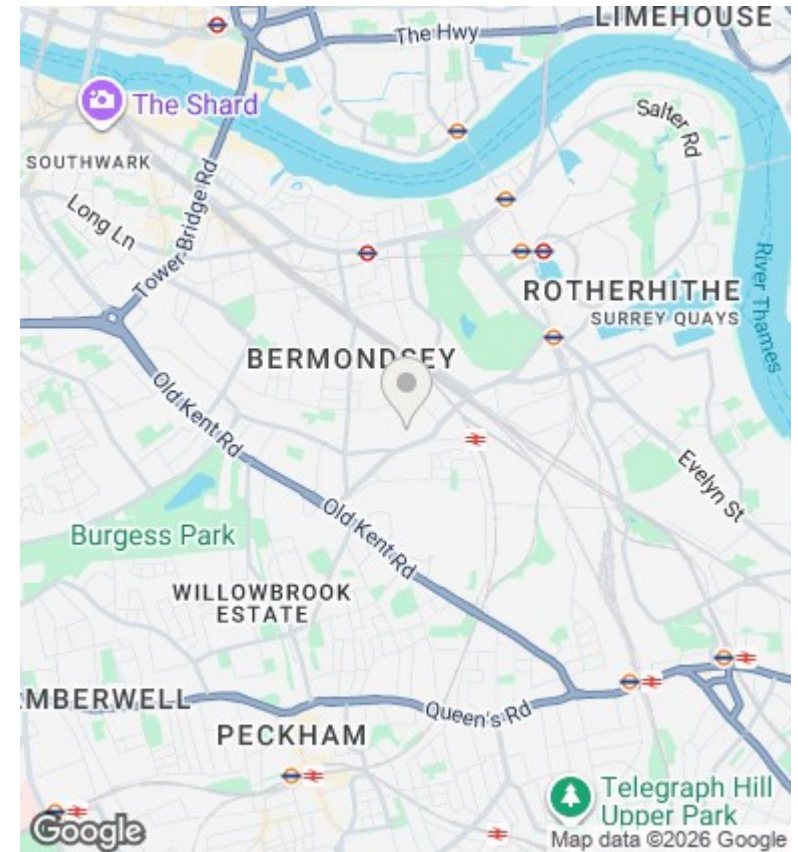
Lettings@hamondsestates.co.uk  
www.hammonds-estates.co.uk



Hammonds

Plan produced for HAMMONDS Estate Agent

Evolve This floor plan is for illustrative purposes only. Floor areas including total floor area openings are approximate. TOTAL FLOOR AREA **55** meters **148.4** Sq feet **1,603.1**



### Directions

### Viewings

Viewings by arrangement only. Call 02089802226 to make an appointment.

### Council Tax Band

D

### EPC Rating:

C

Energy Efficiency Rating		
	Current	Potential
<i>Very energy efficient - lower running costs</i>		
(92 plus) <b>A</b>		
(81-91) <b>B</b>		
(69-80) <b>C</b>	<b>76</b>	<b>78</b>
(55-68) <b>D</b>		
(39-54) <b>E</b>		
(21-38) <b>F</b>		
(1-20) <b>G</b>		
<i>Not energy efficient - higher running costs</i>		
<b>England &amp; Wales</b>	EU Directive 2002/91/EC	