



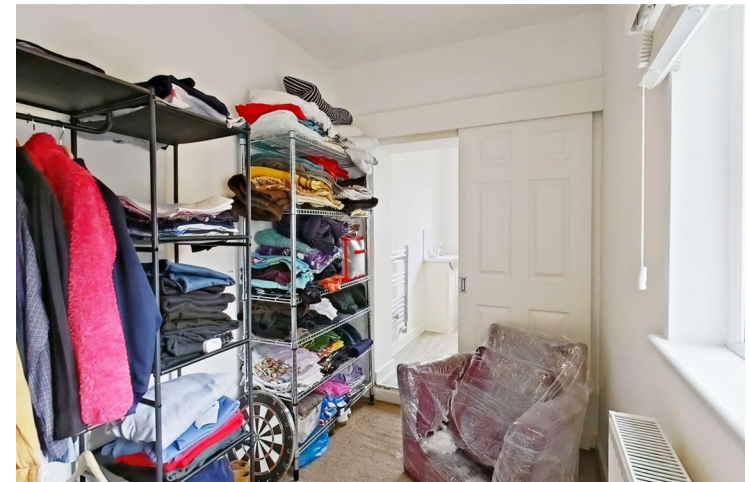
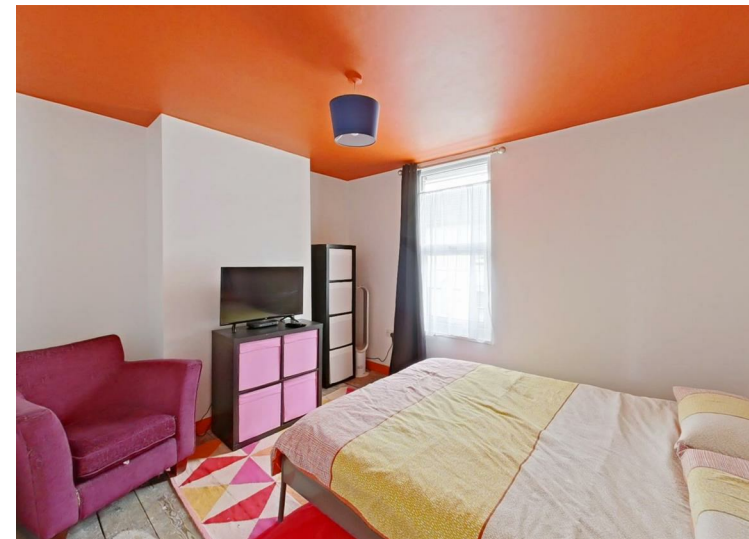
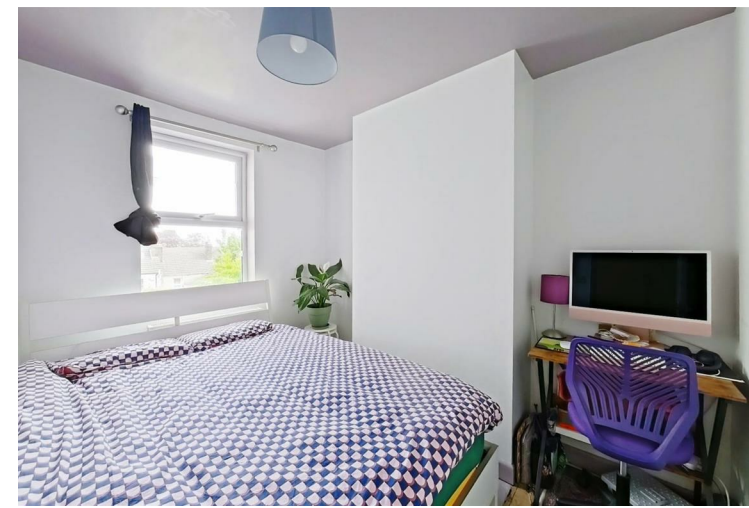
**Baker Street, Rochester**

**£300,000**




- Selling with No forward chain
- Sought-after Rochester location
- Three-bedroom terraced family home
- Two reception rooms, open-plan layout
- Private rear garden
- Basement and useable loft space with Velux window
- Walking distance to historic High Street
- Excellent rail links to London
- Nearby primary and secondary schools
- Call 01634 838700 to book your viewing






## Energy Efficiency Rating

	Current	Potential
<i>Very energy efficient - lower running costs</i>		
(92 plus) <b>A</b>		
(81-91) <b>B</b>		
(69-80) <b>C</b>		<b>80</b>
(55-68) <b>D</b>	<b>65</b>	
(39-54) <b>E</b>		
(21-38) <b>F</b>		
(1-20) <b>G</b>		
<i>Not energy efficient - higher running costs</i>		
<b>England &amp; Wales</b>	EU Directive 2002/91/EC	

## Environmental Impact (CO<sub>2</sub>) Rating

	Current	Potential
<i>Very environmentally friendly - lower CO2 emissions</i>		
(92 plus) <b>A</b>		
(81-91) <b>B</b>		
(69-80) <b>C</b>		<b>80</b>
(55-68) <b>D</b>	<b>65</b>	
(39-54) <b>E</b>		
(21-38) <b>F</b>		
(1-20) <b>G</b>		
<i>Not environmentally friendly - higher CO2 emissions</i>		
<b>England &amp; Wales</b>	EU Directive 2002/91/EC	



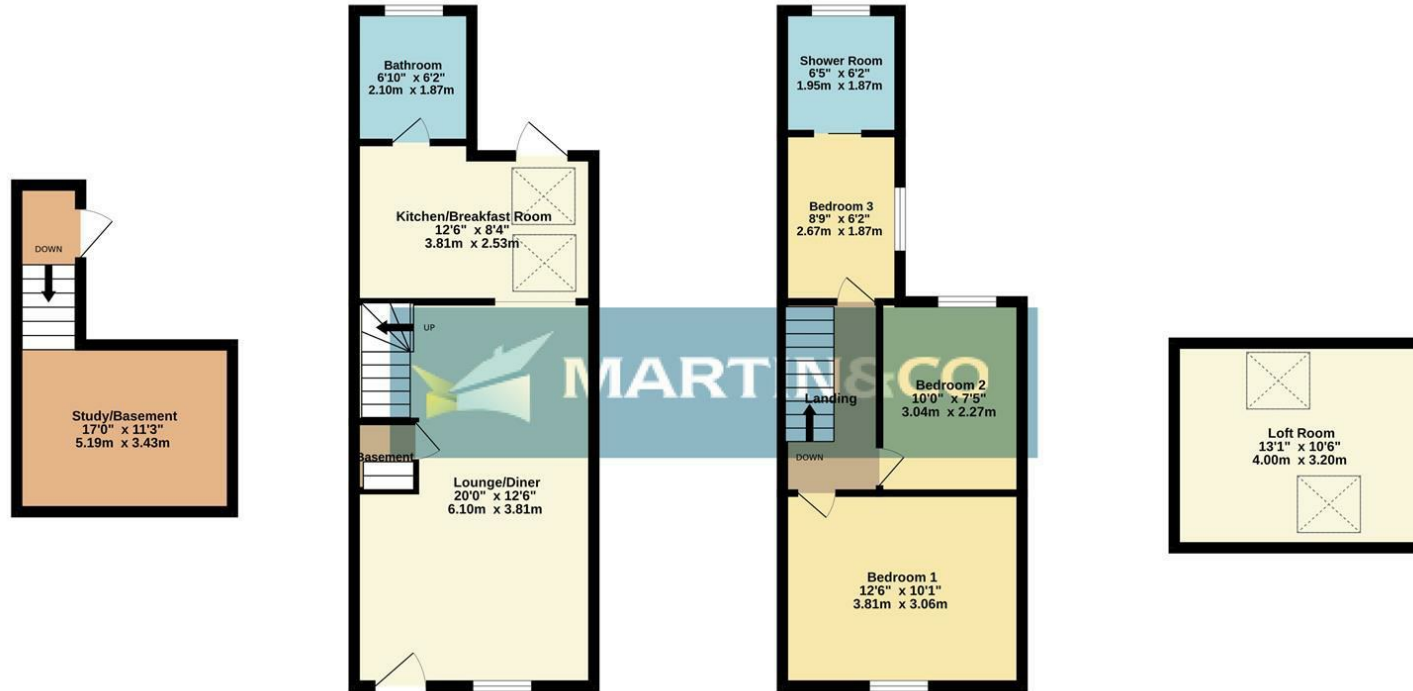


Basement Level  
126 sq.ft. (11.7 sq.m.) approx.

Ground Floor  
392 sq.ft. (36.4 sq.m.) approx.

1st Floor  
343 sq.ft. (31.9 sq.m.) approx.

3rd Floor  
141 sq.ft. (13.1 sq.m.) approx.



TOTAL FLOOR AREA : 1002 sq.ft. (93.1 sq.m.) approx.

Whilst every attempt has been made to ensure the accuracy of the floorplan contained here, measurements of doors, windows, rooms and any other items are approximate and no responsibility is taken for any error, omission or mis-statement. This plan is for illustrative purposes only and should be used as such by any prospective purchaser. The services, systems and appliances shown have not been tested and no guarantee as to their operability or efficiency can be given.  
Made with Metropix ©2026

Martin & Co Medway Sales  
161 High Street, Rochester, Kent, ME1 1EH

<http://www.martinco.com>



**Accuracy:** References to the Tenure of a Property are based on information supplied by the Seller. The Agent has not had sight of the title documents. A Buyer is advised to obtain verification from their Solicitor. Items shown in photographs including but not limited to carpets, fixtures and fittings are not included unless specifically mentioned within the sales particulars. They may however be available by separate negotiation. Buyers must check the availability of any property and make an appointment to view before embarking on any journey to see a property. No person in the employment of the agent has any authority to make any representation about the property, and accordingly any information given is entirely without responsibility on the part of the agents, sellers(s) or lessors(s). Any property particulars are not an offer or contract, nor form part of one. **Sonic / laser Tape:** Measurements taken using a sonic / laser tape measure may be subject to a small margin of error. **All**

**Measurements:** All Measurements are Approximate. **Services Not tested:** The Agent has not tested any apparatus, equipment, Fixtures and Fittings or services and so cannot verify that they are in working order or fit for the purpose. A Buyer is advised to obtain verification from their Solicitor or Surveyor.

