



**St. Sebastian's Way, Wellesley,  
Aldershot**

0000 000

  
**MARTIN&CO**

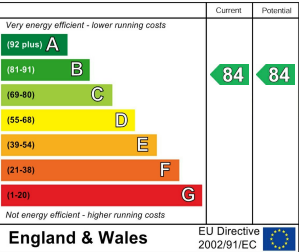


# St. Sebastian's Way, Wellesley,

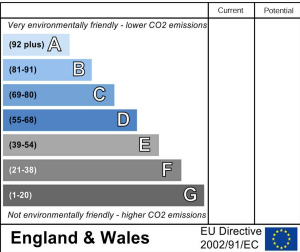
- Modern Living
- Spacious Interior
- Desirable Location
- Fully Equipped Kitchen
- Long Lease
- Allocated Parking
- EPC: B

This stylish top-floor apartment in the sought-after Stanhope Gardens Development, situated in St Sebastian's Way, Wellesley offers modern living with a spacious layout, integrated kitchen, and generous lease of 995 years. Perfect for individuals or couples, it features a bright living space, allocated parking, and easy access to local amenities and transport. A prime opportunity for first-time buyers or downsizers seeking comfort, convenience, and long-term peace of mind.

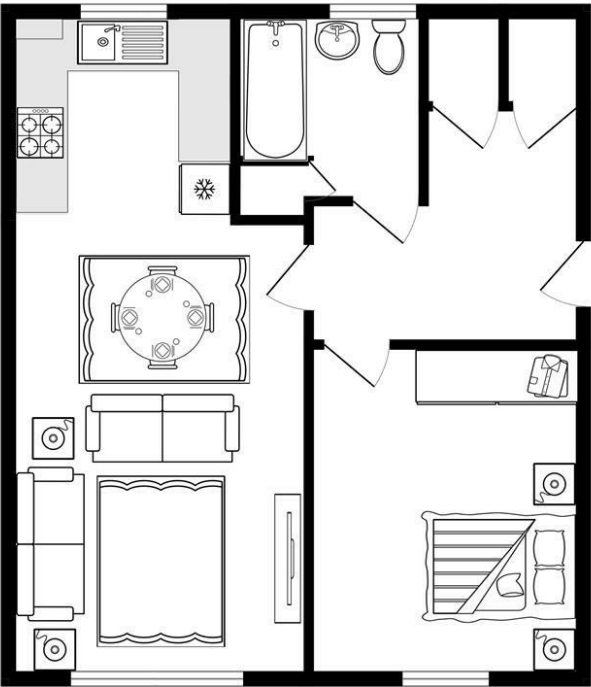
## Energy Efficiency Rating



## Environmental Impact (CO<sub>2</sub>) Rating



GROUND FLOOR  
558 sq.ft. (51.8 sq.m.) approx.



TOTAL FLOOR AREA: 558 sq.ft. (51.8 sq.m.) approx.  
Whilst every attempt has been made to ensure the accuracy of the floorplan contained here, measurements of doors, windows, rooms and any other items are approximate and no responsibility is taken for any error, omission or mis-statement. This plan is for illustrative purposes only and should be used as such by any prospective purchaser. The services, systems and appliances shown have not been tested and no guarantee as to their operability or efficiency can be given.  
Made with Metropix i2025

Martin & Co Aldershot Sales  
173 Victoria Road, Aldershot, Hampshire, GU11 1JU  
01252 311974 . aldershot@martinco.com

01252 311974  
<http://www.martinco.com>



**Accuracy:** References to the Tenure of a Property are based on information supplied by the Seller. The Agent has not had sight of the title documents. A Buyer is advised to obtain verification from their Solicitor. Items shown in photographs including but not limited to carpets, fixtures and fittings are not included unless specifically mentioned within the sales particulars. They may however be available by separate negotiation. Buyers must check the availability of any property and make an appointment to view before embarking on any journey to see a property. No person in the employment of the agent has any authority to make any representation about the property, and accordingly any information given is entirely without responsibility on the part of the agents, sellers(s) or lessors(s). Any property particulars are not an offer or contract, nor form part of one. **Sonic / laser Tape:** Measurements taken using a sonic / laser tape measure may be subject to a small margin of error. **All Measurements:** All Measurements are Approximate. **Services Not tested:** The Agent has not tested any apparatus, equipment, Fixtures and Fittings or services and so cannot verify that they are in working order or fit for the purpose. A Buyer is advised to obtain verification from their Solicitor or Surveyor.