



Magna House

£150,000

Magna House

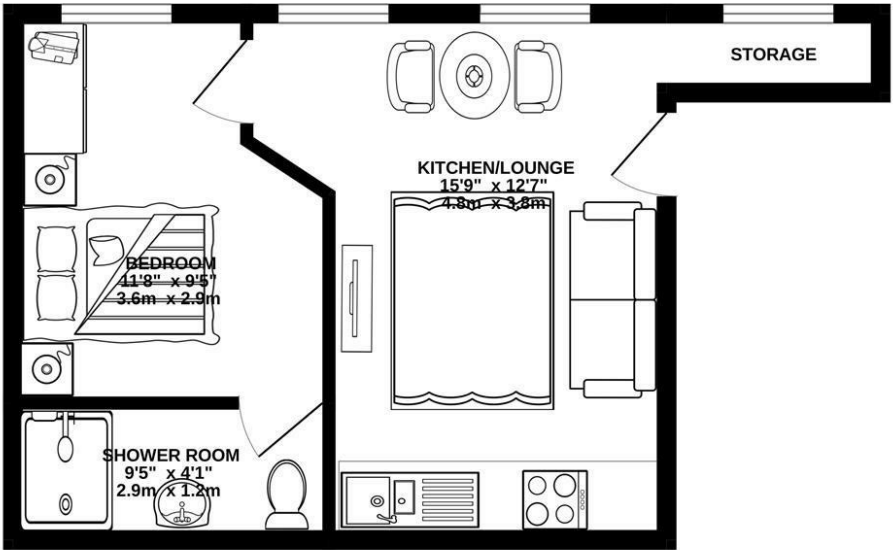
- Modern One-Bedroom Apartment
- Prime Location
- Ideal for First-Time Buyers or Investors
- Allocated Parking
- Long Lease: 115 years remaining
- Costs: Ground rent of £500 per year, service charge of £1,923.42pa

Magna House is a stylish one-bedroom apartment offering contemporary design, built-in 2016, and perfectly positioned for modern urban living. With a spacious reception room, sleek bathroom, allocated parking, and a long lease, it's ideal for first-time buyers or investors. Located near key amenities and transport links, this is a rare opportunity to secure comfort, convenience, and value in one smart package.

Energy Efficiency Rating		
	Current	Potential
Very energy efficient - lower running costs		
(92 plus) A		
(81-91) B		
(69-80) C		
(55-68) D		
(39-54) E		
(21-38) F		
(1-20) G		
Not energy efficient - higher running costs		
England & Wales	EU Directive 2002/91/EC	

Environmental Impact (CO ₂) Rating		
	Current	Potential
Very environmentally friendly - lower CO ₂ emissions		
(92 plus) A		
(81-91) B		
(69-80) C		
(55-68) D		
(39-54) E		
(21-38) F		
(1-20) G		
Not environmentally friendly - higher CO ₂ emissions		
England & Wales	EU Directive 2002/91/EC	

GROUND FLOOR
323 sq.ft. (30.0 sq.m.) approx.



1 BED/1 BATH/1 RECEPTION
TOTAL FLOOR AREA : 323 sq.ft. (30.0 sq.m.) approx.
Whilst every attempt has been made to ensure the accuracy of the floorplan contained here, measurements of doors, windows, rooms and any other items are approximate and no responsibility is taken for any error, omission or mis-statement. This plan is for illustrative purposes only and should be used as such by any prospective purchaser. The services, systems and appliances shown have not been tested and no guarantee as to their operability or efficiency can be given.
Made with Metropix ©2025

Martin & Co Aldershot Sales
173 Victoria Road, Aldershot, Hampshire, GU11 1JU
01252 311974 . aldershot@martinco.com

01252 311974
<http://www.martinco.com>



Accuracy: References to the Tenure of a Property are based on information supplied by the Seller. The Agent has not had sight of the title documents. A Buyer is advised to obtain verification from their Solicitor. Items shown in photographs including but not limited to carpets, fixtures and fittings are not included unless specifically mentioned within the sales particulars. They may however be available by separate negotiation. Buyers must check the availability of any property and make an appointment to view before embarking on any journey to see a property. No person in the employment of the agent has any authority to make any representation about the property, and accordingly any information given is entirely without responsibility on the part of the agents, sellers(s) or lessors(s). Any property particulars are not an offer or contract, nor form part of one. **Sonic / laser Tape:** Measurements taken using a sonic / laser tape measure may be subject to a small margin of error. **All Measurements:** All Measurements are Approximate. **Services Not tested:** The Agent has not tested any apparatus, equipment, Fixtures and Fittings or services and so cannot verify that they are in working order or fit for the purpose. A Buyer is advised to obtain verification from their Solicitor or Surveyor.