



**Glenwood Court**

**£1,800**

  
**MARTIN&CO**



# Glenwood Court

## House - Townhouse

3 Bedrooms, 3 Bathroom

£1,800

Date Available: 30th January 2026

Deposit: £2,076

Not specified

- Security Deposit £2076
- EPC - C 76
- Council Tax C
- Three Bedrooms
- Modern Kitchen
- Private Garden
- Principle Bedroom with En-Suit
- Gas Central Heating

Martin & Co are pleased to present this well-appointed three-bedroom townhouse, offering spacious and versatile accommodation arranged over three floors, located in the desirable residential area of Glenwood Court.

On the ground floor you'll find a generous living room with doors that open onto the private back garden, a modern fitted kitchen and two piece bathroom.

The first floor features two double bedrooms and a contemporary three-piece family bathroom.

The top floor is dedicated to a very spacious principal bedroom with its own en-suite shower room.

Externally, the property benefits from a private garden and off-street parking for one car.

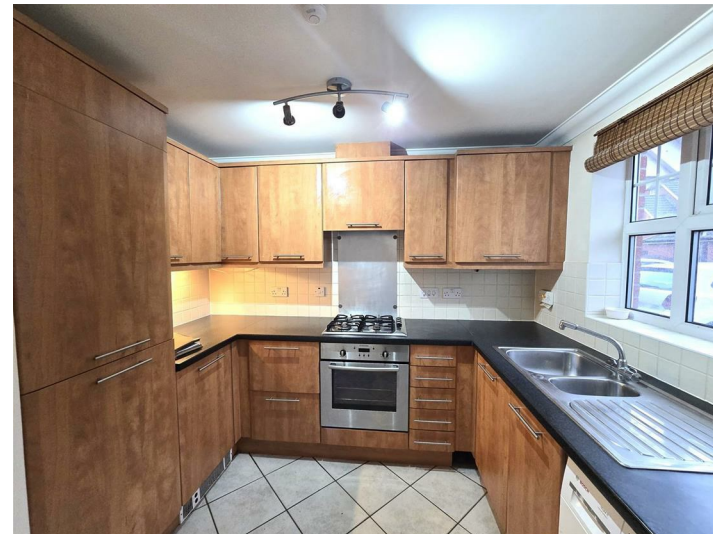
The location is ideal for commuters and local amenities alike. Farnborough (Main) railway station is just a short walk away, offering direct services to London and other major destinations, while Farnborough North station is also within easy reach. The surrounding area boasts a range of shops, cafes, restaurants and supermarkets, with Farnborough town centre nearby providing additional leisure and retail options.

Available immediately on an unfurnished basis.

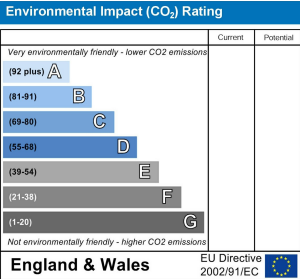
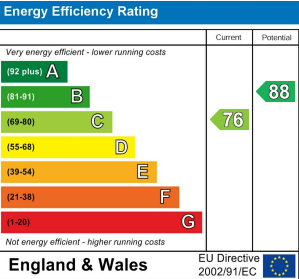
Minimum household income for references required - £54,000

Holding deposit (one weeks rent) - £415

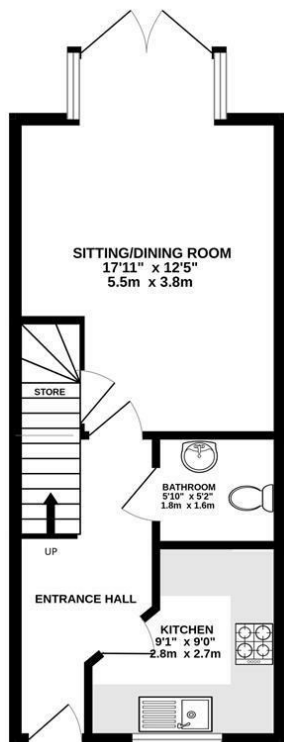
\*\*This is a guide only and is subject to a full affordability assessment on application, which includes any other credit commitments and credit history.



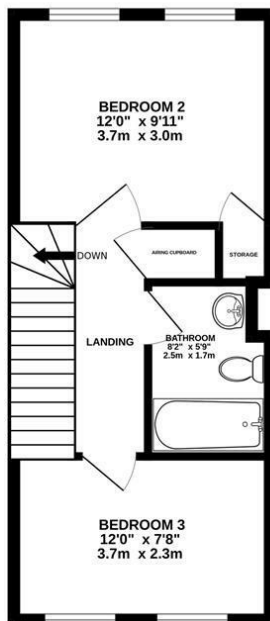




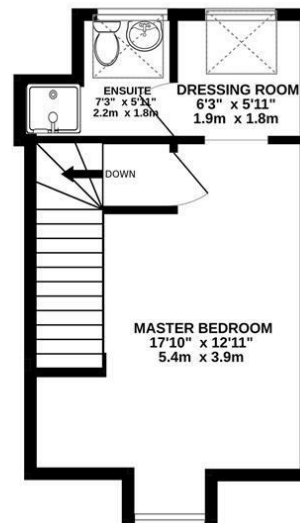
GROUND FLOOR  
382 sq.ft. (35.5 sq.m.) approx.



1ST FLOOR  
339 sq.ft. (31.5 sq.m.) approx.



2ND FLOOR  
280 sq.ft. (26.0 sq.m.) approx.



TOTAL FLOOR AREA : 1001 sq.ft. (93.0 sq.m.) approx.

Whilst every attempt has been made to ensure the accuracy of the floorplan contained here, measurements of doors, windows, rooms and any other items are approximate and no responsibility is taken for any error, omission or mis-statement. This plan is for illustrative purposes only and should be used as such by any prospective purchaser. The services, systems and appliances shown have not been tested and no guarantee as to their operability or efficiency can be given.  
Made with Metropix ©2025

**Martin & Co Aldershot Lettings**  
173 Victoria Road, Aldershot, Hampshire, GU11 1JU  
01252 311974 . [aldershot@martinco.com](mailto:aldershot@martinco.com)

**01252 311974**  
**<http://www.martinco.com>**



**Accuracy:** References to the Tenure of a Property are based on information supplied by the Seller. The Agent has not had sight of the title documents. A Buyer is advised to obtain verification from their Solicitor. Items shown in photographs including but not limited to carpets, fixtures and fittings are not included unless specifically mentioned within the sales particulars. They may however be available by separate negotiation. Buyers must check the availability of any property and make an appointment to view before embarking on any journey to see a property. No person in the employment of the agent has any authority to make any representation about the property, and accordingly any information given is entirely without responsibility on the part of the agents, sellers(s) or lessors(s). Any property particulars are not an offer or contract, nor form part of one. **Sonic / laser Tape:** Measurements taken using a sonic / laser tape measure may be subject to a small margin of error. **All**

**Measurements:** All Measurements are Approximate. **Services Not tested:** The Agent has not tested any apparatus, equipment, Fixtures and Fittings or services and so cannot verify that they are in working order or fit for the purpose. A Buyer is advised to obtain verification from their Solicitor or Surveyor.