



**Ascot Court, Grove Road**

**£1,250 PCM**

  
**MARTIN&CO**

# Ascot Court, Grove Road

## Apartment

2 Bedrooms, 2 Bathroom

£1,250 PCM

Date Available: 11th March 2025

Deposit: £1,442

Unfurnished

- Deposit
- EPC D 68
- Council Tax C
- Two Bedroom, Top Floor Apartment
- Walking Distance to Aldershot Station
- Popular Ascot Court Development
- Large Living Room
- Secured Entry
- Off Street Parking for Two Cars
- Double Glazing

Martin & Co are pleased to bring to the market this top floor, two bedroom apartment, located in the sought after Ascot Court development in Aldershot. Accommodation comprises of a large living room, modern kitchen and bathroom and two double bedrooms.

The property also benefits from off road parking for two cars, double glazing and is in close proximity to local amenities and public transport.

Please note that a water bill of £20pcm will be added on top of the rent and there is no lift access within the property.

Available immediately on unfurnished basis.  
Minimum Household income - £37,500  
Holding deposit - £288



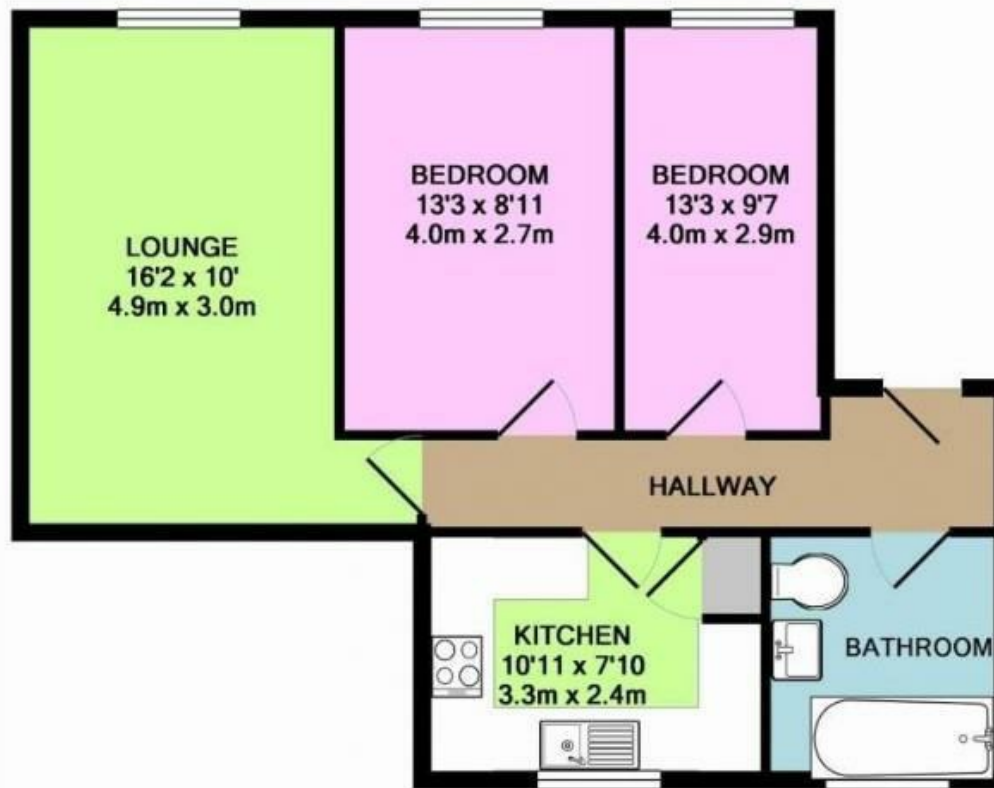


#### Energy Efficiency Rating

	Current	Potential
Very energy efficient - lower running costs		
(92 plus) <b>A</b>		
(81-91) <b>B</b>		
(69-80) <b>C</b>		
(55-68) <b>D</b>	<b>68</b>	<b>74</b>
(39-54) <b>E</b>		
(21-38) <b>F</b>		
(1-20) <b>G</b>		
Not energy efficient - higher running costs		
<b>England &amp; Wales</b>	EU Directive 2002/91/EC	

#### Environmental Impact (CO<sub>2</sub>) Rating

	Current	Potential
Very environmentally friendly - lower CO <sub>2</sub> emissions		
(92 plus) <b>A</b>		
(81-91) <b>B</b>		
(69-80) <b>C</b>		
(55-68) <b>D</b>		
(39-54) <b>E</b>		
(21-38) <b>F</b>		
(1-20) <b>G</b>		
Not environmentally friendly - higher CO <sub>2</sub> emissions		
<b>England &amp; Wales</b>	EU Directive 2002/91/EC	



Whilst every attempt has been made to ensure the accuracy of the floor plan contained here, measurements of doors, windows, rooms and any other items are approximate and no responsibility is taken for any error, omission, or mis-statement. This plan is for illustrative purposes only and should be used as such by any prospective purchaser. The services, systems and appliances shown have not been tested and no guarantee as to their operability or efficiency can be given  
 Made with Metropix ©2016

Martin & Co Aldershot Lettings  
 173 Victoria Road, Aldershot, Hampshire, GU11 1JU  
 01252 311974 . aldershot@martinco.com

01252 311974  
<http://www.martinco.com>



**Accuracy:** References to the Tenure of a Property are based on information supplied by the Seller. The Agent has not had sight of the title documents. A Buyer is advised to obtain verification from their Solicitor. Items shown in photographs including but not limited to carpets, fixtures and fittings are not included unless specifically mentioned within the sales particulars. They may however be available by separate negotiation. Buyers must check the availability of any property and make an appointment to view before embarking on any journey to see a property. No person in the employment of the agent has any authority to make any representation about the property, and accordingly any information given is entirely without responsibility on the part of the agents, sellers(s) or lessors(s). Any property particulars are not an offer or contract, nor form part of one. **Sonic / laser Tape:** Measurements taken using a sonic / laser tape measure may be subject to a small margin of error. **All**

**Measurements:** All Measurements are Approximate. **Services Not tested:** The Agent has not tested any apparatus, equipment, Fixtures and Fittings or services and so cannot verify that they are in working order or fit for the purpose. A Buyer is advised to obtain verification from their Solicitor or Surveyor.

