



**Cathedral Court, O'Gorman Avenue,
Farnborough**

01 500 5000

Cathedral Court, O'Gorman
Avenue, Farnborough

Apartment

2 Bedrooms, 2 Bathroom

£1,500 PCM

Date Available: 25th June 2024

Deposit: £1,730

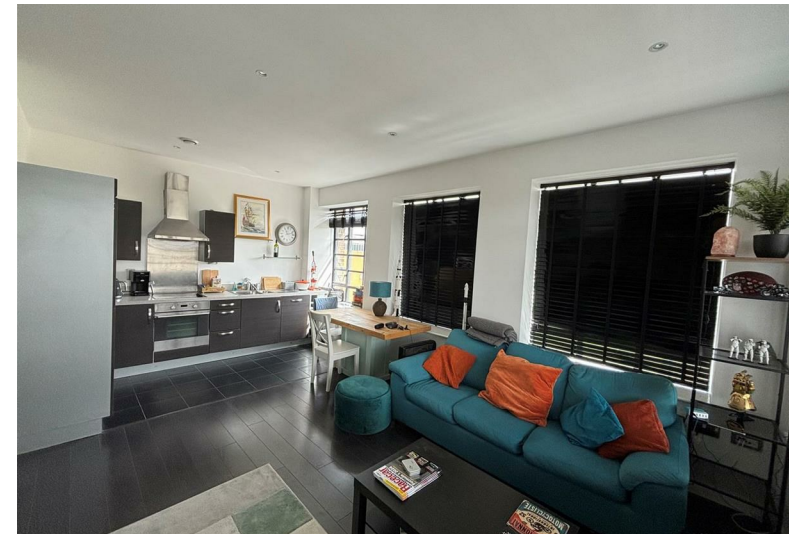
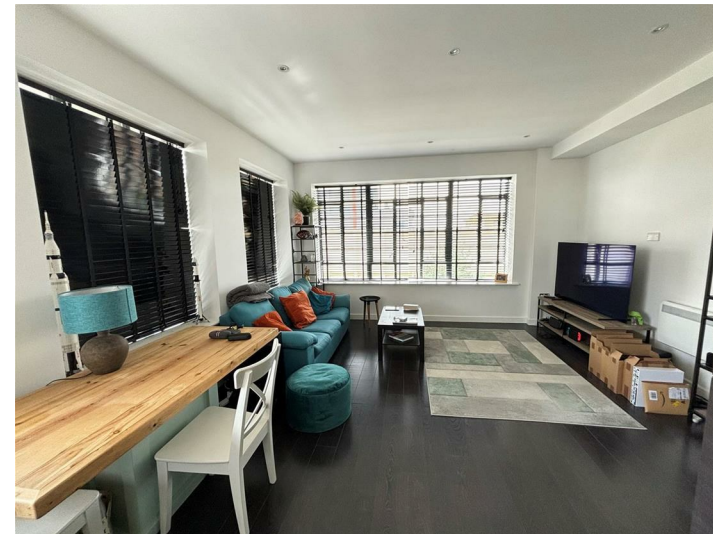
Unfurnished

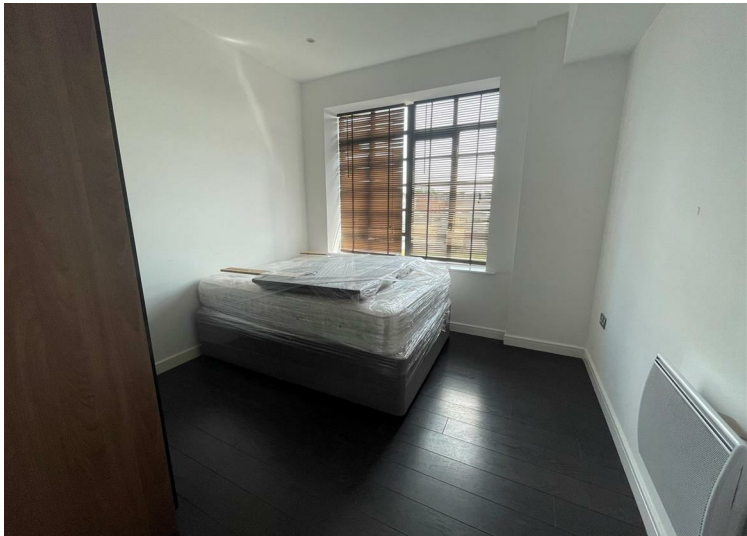
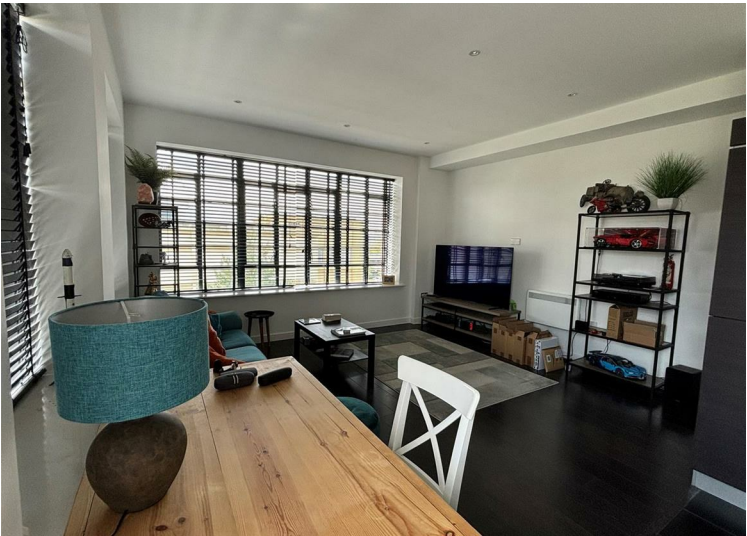
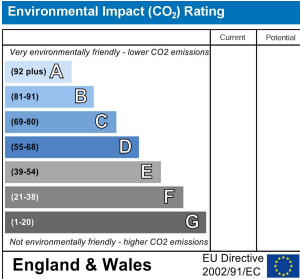
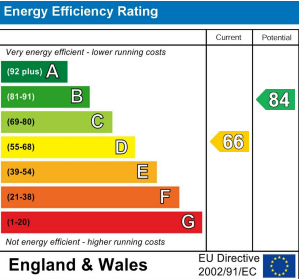
- Council Tax Band C
- Deposit £1,730
- EPC Rating D 66
- Modern Kitchen
- Modern Bathroom
- Two Bedrooms
- Allocated Parking
- Available 26th of June

Martin & Co are pleased to bring to the market this spacious, second floor, two bedroom apartment in Cathedral Court, Farnborough. Located in the popular Red Row development, this property boasts a spacious open plan living room/kitchen, two double bedrooms with an en-suite to the master and modern bathroom. Further benefits include double glazing, allocated parking and security entry.

Available from the 25th of June 2024 on an unfurnished basis.

Minimum household income required for referencing: £45,000
Holding deposit: £346
Deposit: £1,730





Martin & Co Aldershot Lettings
173 Victoria Road, Aldershot, Hampshire, GU11 1JU
01252 311974 . aldershot@martinco.com

01252 311974
<http://www.martinco.com>



Accuracy: References to the Tenure of a Property are based on information supplied by the Seller. The Agent has not had sight of the title documents. A Buyer is advised to obtain verification from their Solicitor. Items shown in photographs including but not limited to carpets, fixtures and fittings are not included unless specifically mentioned within the sales particulars. They may however be available by separate negotiation. Buyers must check the availability of any property and make an appointment to view before embarking on any journey to see a property. No person in the employment of the agent has any authority to make any representation about the property, and accordingly any information given is entirely without responsibility on the part of the agents, sellers(s) or lessors(s). Any property particulars are not an offer or contract, nor form part of one. **Sonic / laser Tape:** Measurements taken using a sonic / laser tape measure may be subject to a small margin of error. **All**

Measurements: All Measurements are Approximate. **Services Not tested:** The Agent has not tested any apparatus, equipment, Fixtures and Fittings or services and so cannot verify that they are in working order or fit for the purpose. A Buyer is advised to obtain verification from their Solicitor or Surveyor.