



Bell Chase, Aldershot

£1,450 Per Month


MARTIN & CO

Bell Chase, Aldershot

Apartment

2 Bedrooms, 2 Bathroom

£1,450 Per Month

Date Available: 16th July 2026

Deposit: £1,673

Furnished/unfurnished

- Ground Floor
- Two Double Bedrooms
- Beautifully Presented
- Council Tax Band C
- Security Deposit £1,673
- Furnished OR Unfurnished
- Available July
- Residents' Parking
- EPC - B 81

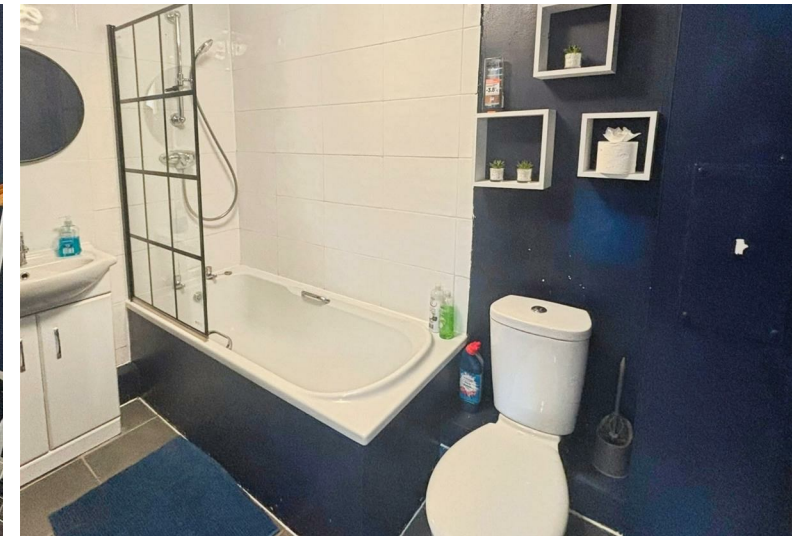
Martin & Co are delighted to offer to the market this spacious and beautifully presented two bedroom ground floor apartment within Aldershot town centre.

The property offers an open plan reception room/kitchen, two double bedrooms, and modern bathroom, as well as residents' parking.

Situated in a convenient residential area of Aldershot, the property is within easy reach of a range of local amenities including supermarkets, shops, cafés, restaurants and leisure facilities. Aldershot town centre is just a short distance away, offering excellent everyday conveniences. The property also benefits from good transport links, with Aldershot railway station providing direct services to London Waterloo, and easy access to the A331, A3 and M3 for commuters.

Available immediately on a furnished or unfurnished basis.
Minimum household income for references required - £43,500**
Holding deposit (one weeks rent) - £334

**This is a guide only and is subject to a full affordability assessment on application, which includes any other credit commitments and credit history.





Energy Efficiency Rating

	Current	Potential
Very energy efficient - lower running costs (92 plus) A		
(81-91) B		
(69-80) C		
(55-68) D		
(39-54) E		
(21-38) F		
(1-20) G		
Not energy efficient - higher running costs		

81 82

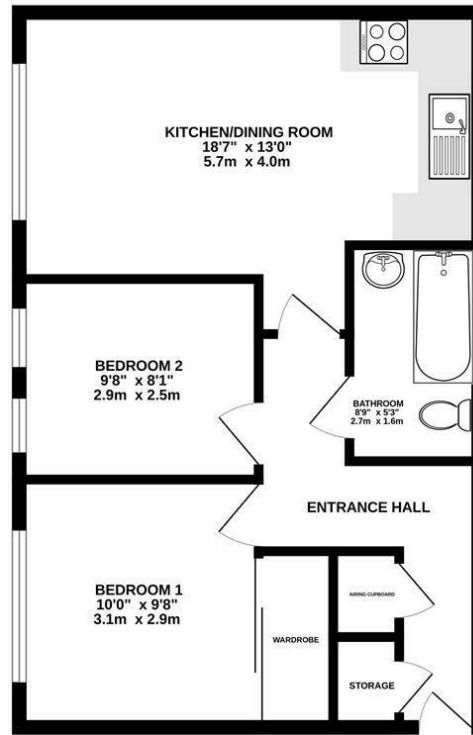
England & Wales EU Directive 2002/91/EC

Environmental Impact (CO₂) Rating

	Current	Potential
Very environmentally friendly - lower CO ₂ emissions (92 plus) A		
(81-91) B		
(69-80) C		
(55-68) D		
(39-54) E		
(21-38) F		
(1-20) G		
Not environmentally friendly - higher CO ₂ emissions		

England & Wales EU Directive 2002/91/EC

GROUND FLOOR
536 sq.ft. (49.8 sq.m.) approx.



TOTAL FLOOR AREA : 536 sq.ft. (49.8 sq.m.) approx.

Whilst every attempt has been made to ensure the accuracy of the floorplan contained here, measurements of doors, windows, rooms and any other items are approximate and no responsibility is taken for any error, omission or mis-statement. This plan is for illustrative purposes only and should be used as such by any prospective purchaser. The services, systems and appliances shown have not been tested and no guarantee as to their operability or efficiency can be given.
Made with Metropix ©2025

Martin & Co Aldershot Lettings
173 Victoria Road, Aldershot, Hampshire, GU11 1JU
01252 311974 . aldershot@martinco.com

01252 311974
<http://www.martinco.com>



Accuracy: References to the Tenure of a Property are based on information supplied by the Seller. The Agent has not had sight of the title documents. A Buyer is advised to obtain verification from their Solicitor. Items shown in photographs including but not limited to carpets, fixtures and fittings are not included unless specifically mentioned within the sales particulars. They may however be available by separate negotiation. Buyers must check the availability of any property and make an appointment to view before embarking on any journey to see a property. No person in the employment of the agent has any authority to make any representation about the property, and accordingly any information given is entirely without responsibility on the part of the agents, sellers(s) or lessors(s). Any property particulars are not an offer or contract, nor form part of one. **Sonic / laser Tape:** Measurements taken using a sonic / laser tape measure may be subject to a small margin of error. **All**

Measurements: All Measurements are Approximate. **Services Not tested:** The Agent has not tested any apparatus, equipment, Fixtures and Fittings or services and so cannot verify that they are in working order or fit for the purpose. A Buyer is advised to obtain verification from their Solicitor or Surveyor.

