



Hepworth Croft, College Town

£1,150 PCM


MARTIN&CO

Hepworth Croft, College Town

House - End Terrace

1 Bedrooms, 1 Bathroom

£1,150 PCM

Date Available: 27th March 2026

Deposit: £1,326

Unfurnished

- Council Tax Band C
- EPC Rating E 53
- Deposit - £1326
- Spacious Living Room
- Modern Kitchen
- Good Sized Rear Garden
- Off Street Parking
- Gas Central Heating
- One Bedroom, End Of Terrace House
- Poplar Residential Location

Martin & Co are pleased to bring to the market this well presented, one bedroom end of terrace house situated in quiet residential area of College Town, Sandhurst.

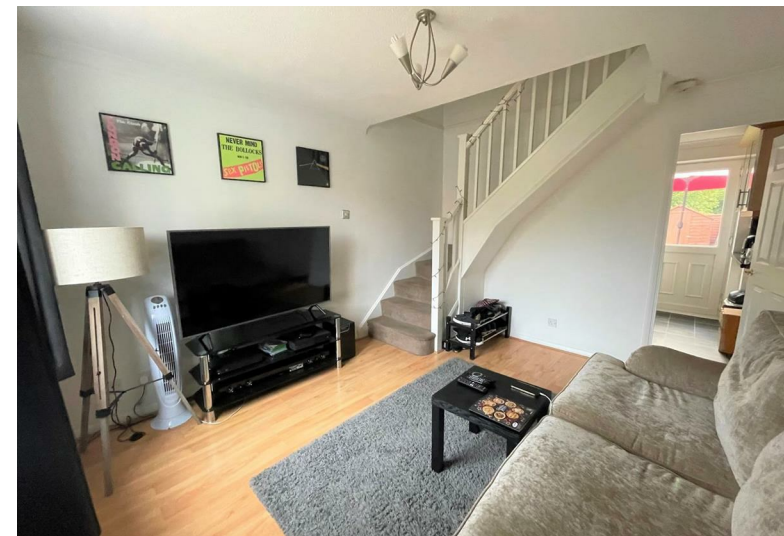
Accommodation comprises of a living room, modern kitchen, bathroom and double bedroom. Further benefits include a good size garden, off street parking and double glazing.

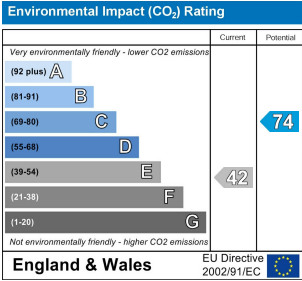
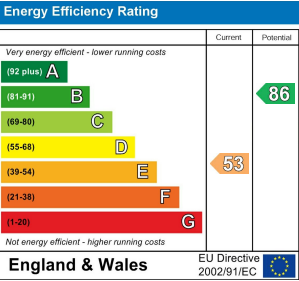
Available from the 27th March 2026 on and unfurnished basis.

Minimum household income for references required - £34,500

Holding deposit (one weeks rent) - £265

**This is a guide only and is subject to a full affordability assessment on application, which includes any other credit commitments and credit history.





Martin & Co Aldershot Lettings
173 Victoria Road, Aldershot, Hampshire, GU11 1JU
01252 311974 . aldershot@martinco.com

01252 311974
<http://www.martinco.com>



Accuracy: References to the Tenure of a Property are based on information supplied by the Seller. The Agent has not had sight of the title documents. A Buyer is advised to obtain verification from their Solicitor. Items shown in photographs including but not limited to carpets, fixtures and fittings are not included unless specifically mentioned within the sales particulars. They may however be available by separate negotiation. Buyers must check the availability of any property and make an appointment to view before embarking on any journey to see a property. No person in the employment of the agent has any authority to make any representation about the property, and accordingly any information given is entirely without responsibility on the part of the agents, sellers(s) or lessors(s). Any property particulars are not an offer or contract, nor form part of one. **Sonic / laser Tape:** Measurements taken using a sonic / laser tape measure may be subject to a small margin of error. **All Measurements:** All Measurements are Approximate. **Services Not tested:** The Agent has not tested any apparatus, equipment, Fixtures and Fittings or services and so cannot verify that they are in working order or fit for the purpose. A Buyer is advised to obtain verification from their Solicitor or Surveyor.