



**Buccaneer Court, Kestrel Road,  
Farnborough**

01 400 500



# Buccaneer Court, Kestrel Road, Farnborough

## Apartment

1 Bedrooms, 1 Bathroom

£1,100 PCM

Date Available: 7th November  
2025

Deposit: £1,269

- EPC C - 80
- Deposit £1269
- Council Tax Band - B
- Spacious Living Room
- Modern Kitchen & Bathroom
- Part-Furnished
- Allocated Parking Space
- Large Balcony
- Lift Access In Communal Areas
- One Bedroom, Second Floor Apartment

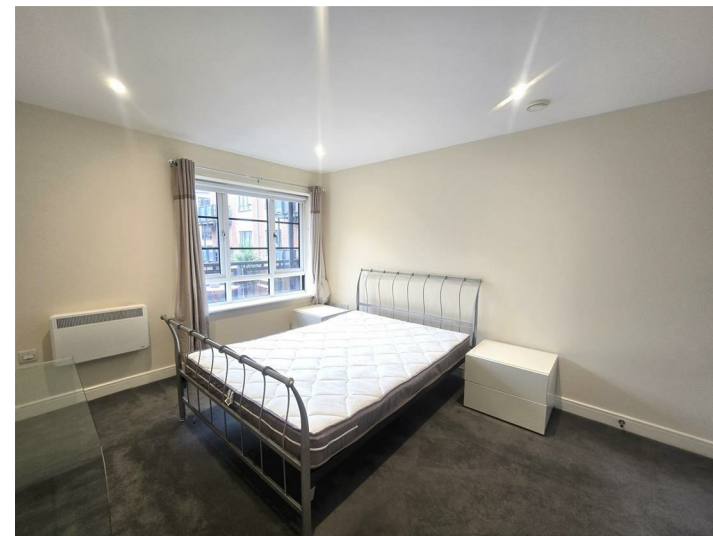
Martin & Co are pleased to bring to the market this fully furnished, second floor, one bedroom apartment in Buccaneer Court, Farnborough.

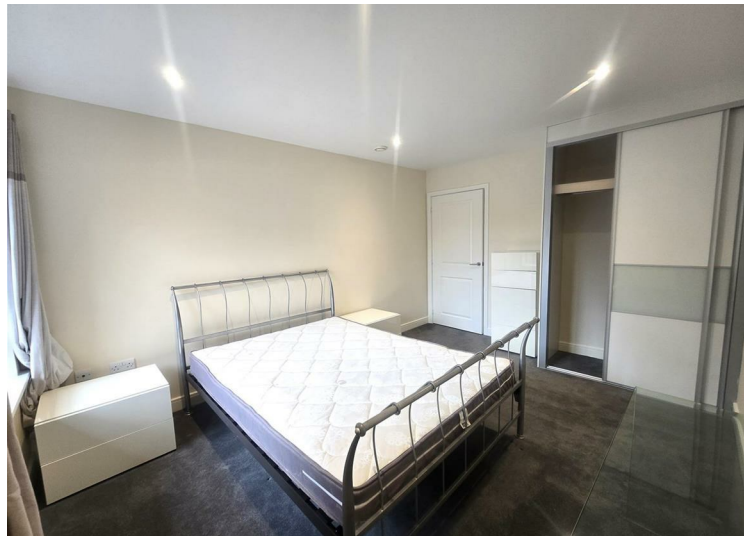
Situated in the popular Redrow development, this property boasts a spacious living room, modern kitchen, modern bathroom and good sized double bedroom with a built in wardrobe.

Further benefits include a large balcony, allocated parking space, double glazing, security entry and lift access in the communal areas.

Available from immediately on a part-furnished basis.  
Minimum household income for references required - £33,000  
Holding deposit (one weeks rent) - £253

\*This is a guide only and is subject to a full affordability assessment on application, which includes any other credit commitments and credit history.\*





**Energy Efficiency Rating**

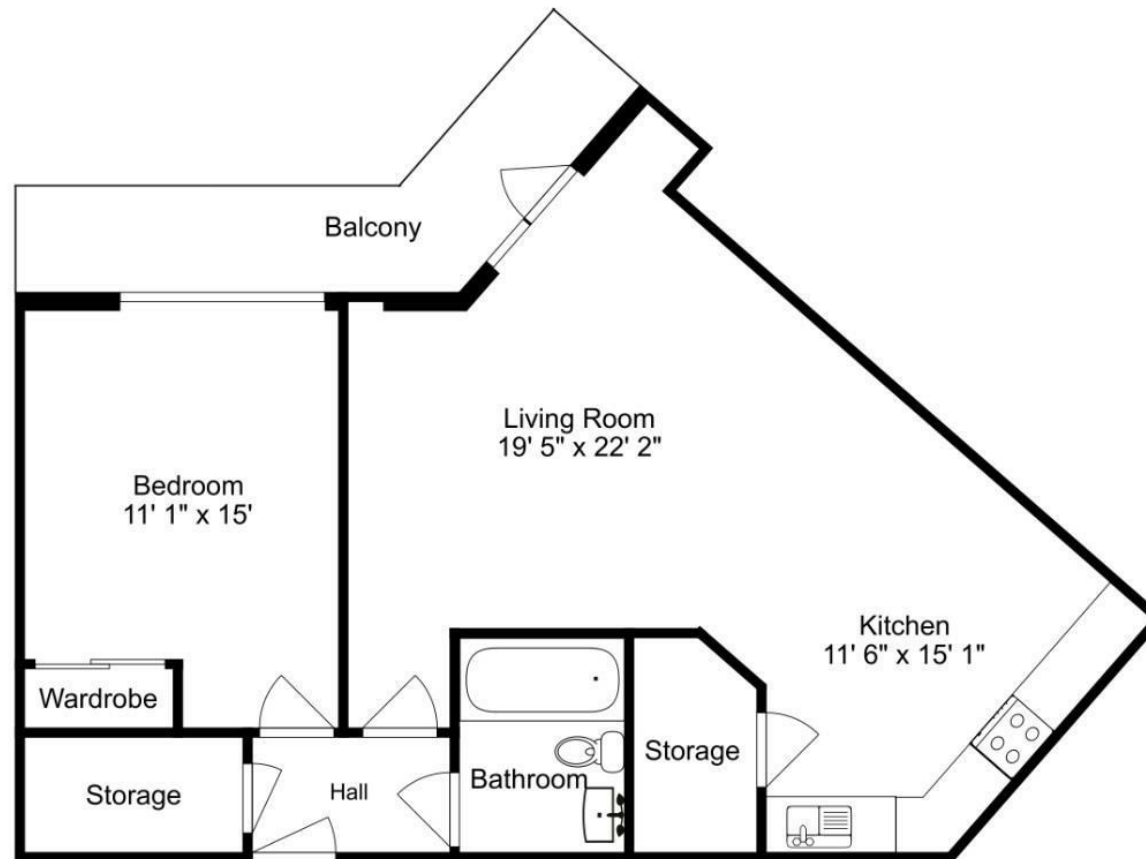
|   | Current   | Potential |
|---|-----------|-----------|
| Very energy efficient - lower running costs |           |           |
| (92 plus) <b>A</b>                          |           |           |
| (81-91) <b>B</b>                            |           |           |
| (69-80) <b>C</b>                            | <b>80</b> | <b>78</b> |
| (55-68) <b>D</b>                            |           |           |
| (39-54) <b>E</b>                            |           |           |
| (21-38) <b>F</b>                            |           |           |
| (1-20) <b>G</b>                             |           |           |
| Not energy efficient - higher running costs |           |           |

England & Wales EU Directive 2002/91/EC

**Environmental Impact (CO<sub>2</sub>) Rating**

|   | Current   | Potential |
|---|-----------|-----------|
| Very environmentally friendly - lower CO <sub>2</sub> emissions |           |           |
| (92 plus) <b>A</b>  |           |           |
| (81-91) <b>B</b>  | <b>86</b> | <b>79</b> |
| (69-80) <b>C</b>  |           |           |
| (55-68) <b>D</b>  |           |           |
| (39-54) <b>E</b>  |           |           |
| (21-38) <b>F</b>  |           |           |
| (1-20) <b>G</b>   |           |           |
| Not environmentally friendly - higher CO <sub>2</sub> emissions |           |           |

England & Wales EU Directive 2002/91/EC



Martin & Co Aldershot Lettings  
 173 Victoria Road, Aldershot, Hampshire, GU11 1JU  
 01252 311974 . [aldershot@martinco.com](mailto:aldershot@martinco.com)

**01252 311974**  
<http://www.martinco.com>



**Accuracy:** References to the Tenure of a Property are based on information supplied by the Seller. The Agent has not had sight of the title documents. A Buyer is advised to obtain verification from their Solicitor. Items shown in photographs including but not limited to carpets, fixtures and fittings are not included unless specifically mentioned within the sales particulars. They may however be available by separate negotiation. Buyers must check the availability of any property and make an appointment to view before embarking on any journey to see a property. No person in the employment of the agent has any authority to make any representation about the property, and accordingly any information given is entirely without responsibility on the part of the agents, sellers(s) or lessors(s). Any property particulars are not an offer or contract, nor form part of one. **Sonic / laser Tape:** Measurements taken using a sonic / laser tape measure may be subject to a small margin of error. **All**

**Measurements:** All Measurements are Approximate. **Services Not tested:** The Agent has not tested any apparatus, equipment, Fixtures and Fittings or services and so cannot verify that they are in working order or fit for the purpose. A Buyer is advised to obtain verification from their Solicitor or Surveyor.

