

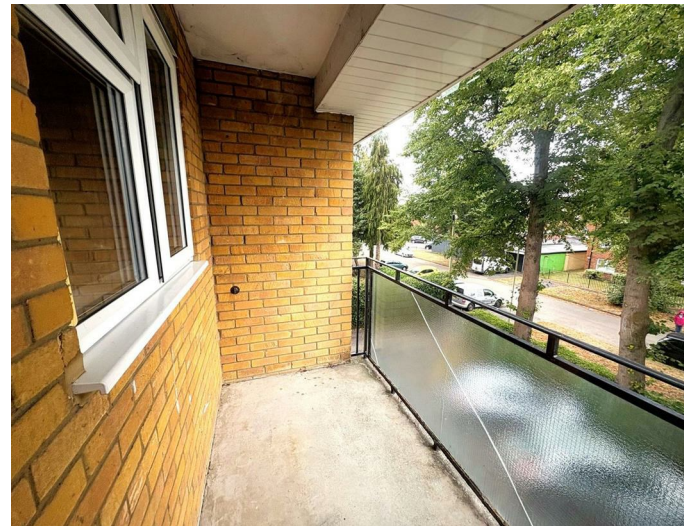


8 Barton Court
Cambridge Road West, Farnborough

Cambridge Road West, Farnborough

- Two well-proportioned bedrooms
- Spacious living room
- South-facing balcony
- Full bathroom
- Garage included
- Convenient Farnborough location

Bright and inviting, this two-bedroom third-floor flat on Cambridge Road West offers spacious living with a sun-soaked south-facing balcony and a garage for secure parking. Set in a prime Farnborough location, it's perfect for couples, small families, or professionals seeking comfort and convenience. With natural light flooding the generous living area and easy access to local amenities, this charming home ticks all the boxes.



Nestled on Cambridge Road West in Farnborough, this charming third-floor flat offers a delightful blend of comfort and convenience. With two well-proportioned bedrooms, this property is ideal for small families, couples, or individuals seeking a serene living space. The flat features a spacious living room that invites natural light, creating a warm and welcoming atmosphere

for relaxation or entertaining guests.

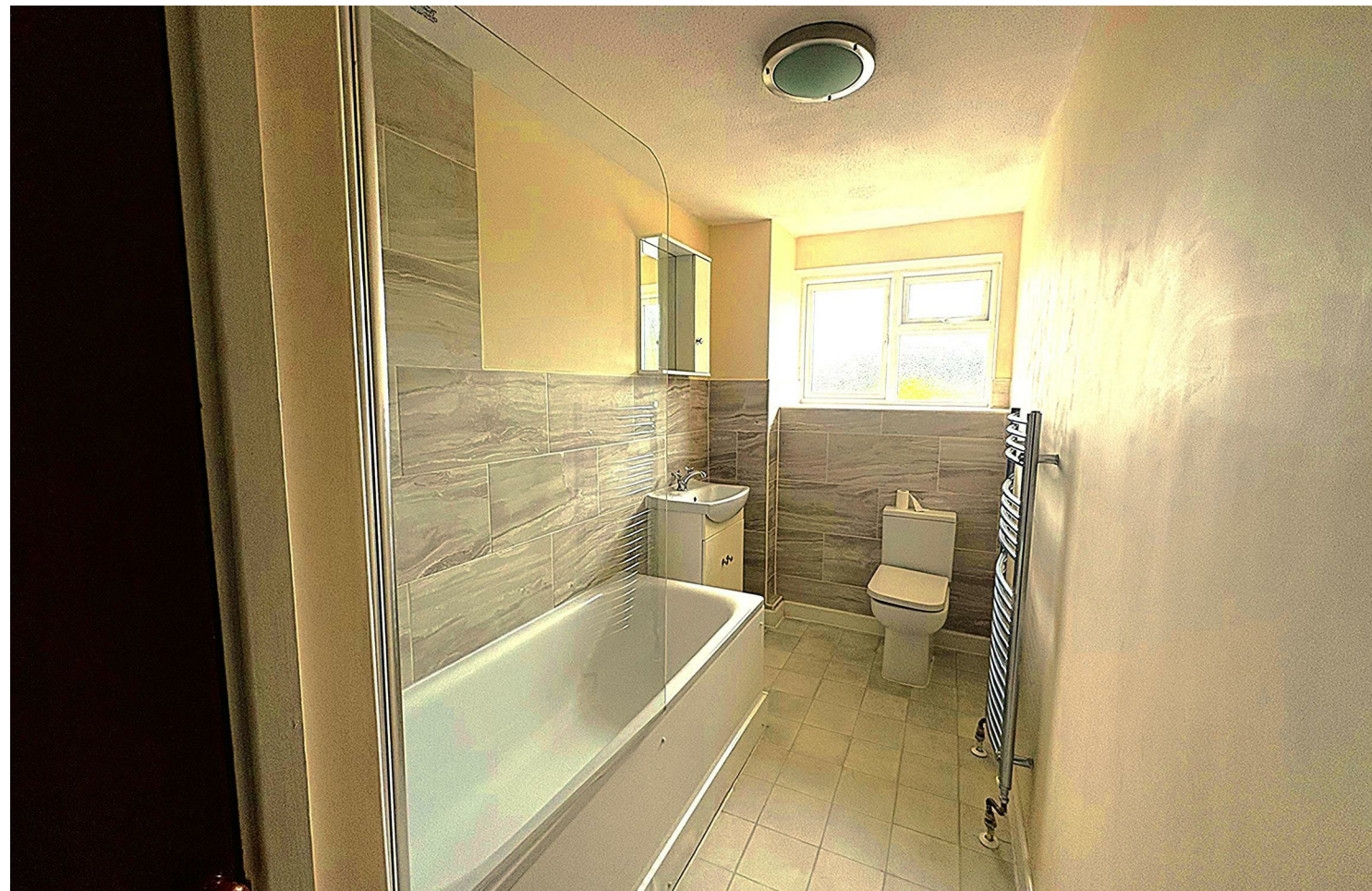
One of the standout features of this apartment is the southern-facing balcony, perfect for enjoying sunny afternoons or unwinding with a good book. The full bathroom is thoughtfully designed, catering to all your daily needs.

Additionally, the property includes a garage, providing secure parking for one vehicle and extra storage space, which is a valuable asset in this bustling area.

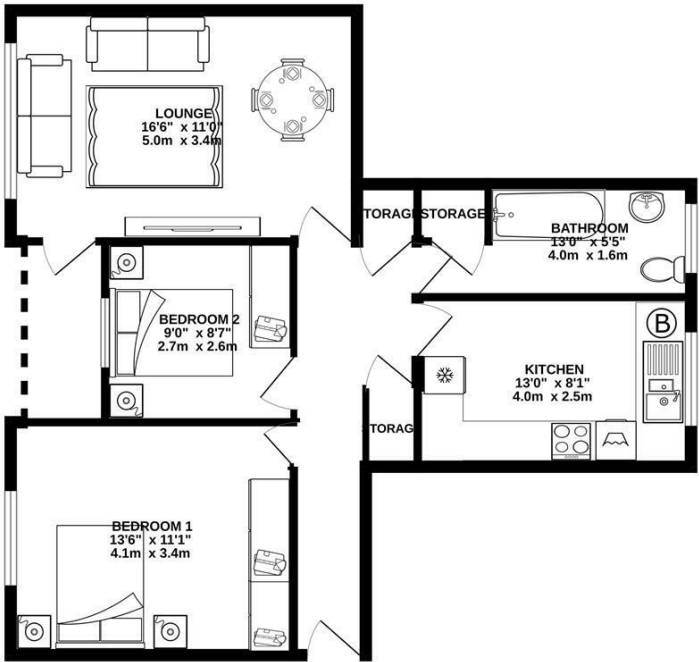
Constructed between 1970 and 1979, this flat combines modern living with a touch of character, making it a wonderful place to call home. With its prime location in Farnborough, residents will benefit from easy access to local amenities, transport links, and green spaces, ensuring a balanced lifestyle.

This property is a fantastic opportunity for those looking to settle in a vibrant community while enjoying the comforts of a well-appointed flat. Don't miss the chance to make this lovely apartment your new home.

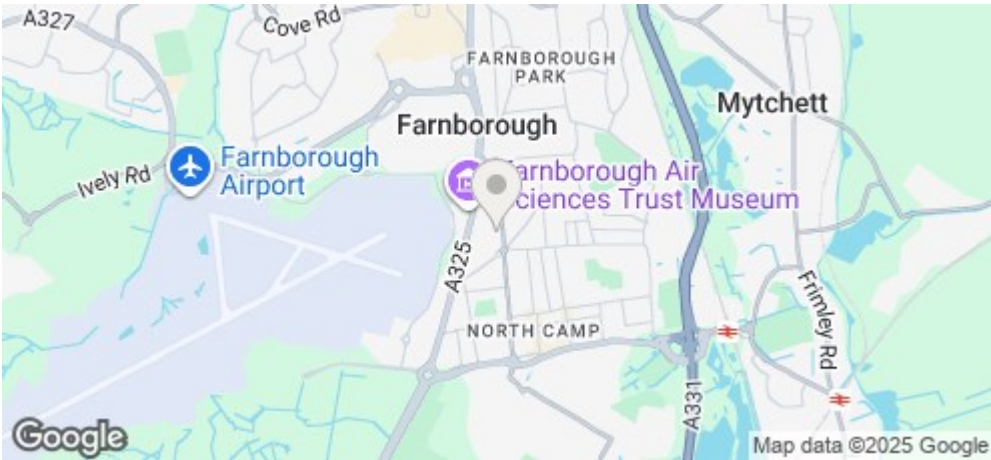
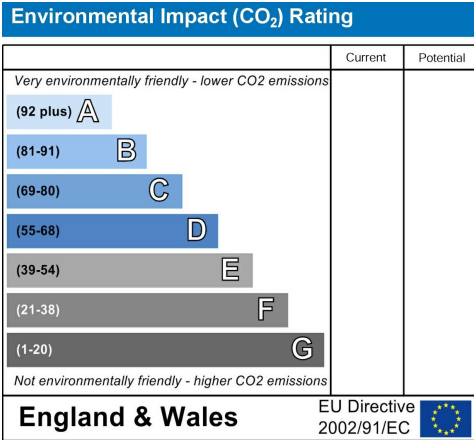
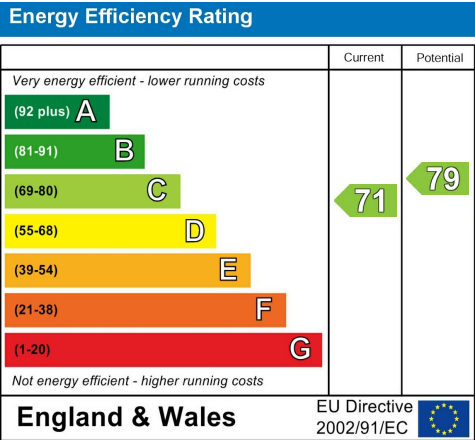
79 Years remaining on the lease
Ground Rent: £200pa
Service Charges: £2,100pa
Council Tax Band: B



TOP FLOOR
664 sq.ft. (61.7 sq.m.) approx.



TOTAL FLOOR AREA: 664 sq.ft. (61.7 sq.m.) approx.
While every attempt has been made to ensure the accuracy of the floorplan contained here, measurements of doors, windows, rooms and any other items are approximate and no responsibility is taken for any error, omission or mis-statement. This plan is for illustrative purposes only and should be used as such by any prospective purchaser. The services, systems and appliances shown have not been tested and no guarantee as to their operability or efficiency can be given.
Made with Metropix ©2025



Martin & Co Aldershot
173 Victoria Road, Aldershot, Hampshire,
GU11 1JU
Aldershot@martinco.com

01252 311974
<http://www.martinco.com>



Accuracy: References to the Tenure of a Property are based on information supplied by the Seller. The Agent has not had sight of the title documents. A Buyer is advised to obtain verification from their Solicitor. Items shown in photographs including but not limited to carpets, fixtures and fittings are not included unless specifically mentioned within the sales particulars. They may however be available by separate negotiation. Buyers must check the availability of any property and make an appointment to view before embarking on any journey to see a property. No person in the employment of the agent has any authority to make any representation about the property, and accordingly any information given is entirely without responsibility on the part of the agents, sellers(s) or lessors(s). Any property particulars are not an offer or contract, nor form part of one. **Sonic / laser Tape:** Measurements taken using a sonic / laser tape measure may be subject to a small margin of error. **All Measurements:** All Measurements are Approximate. **Services Not tested:** The Agent has not tested any apparatus, equipment, Fixtures and Fittings or services and so cannot verify that they are in working order or fit for the purpose. A Buyer is advised to obtain verification from their Solicitor or Surveyor.

