

MARTIN&CO

Ringlet Road, St. Marys Island,
Chatham

01 305 Box Mouth

MARTIN&CO 

Ringlet Road, St. Marys Island, Chatham

Date Available: 17th May 2026
 Deposit: £1,609
 Unfurnished

- Spacious 1-bedroom flat/maisonette
- South-facing garden with decking
- Own front door for privacy
- Open, airy, and bright
- Built-in fridge and dishwasher
- Ample storage space
- Prime location in St Mary's Island
- 1 allocated parking space
- Purpose-built flat, 582 sq ft
- Viewing highly recommended

Nestled in the desirable area of St. Marys Island, Chatham, this charming purpose-built flat on Ringlet Road offers a perfect blend of comfort and convenience. Spanning an impressive 582 square feet, this spacious one-bedroom property is ideal for individuals or couples seeking a modern living space.

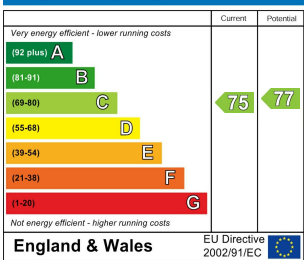
Upon entering, you will be greeted by an open, airy atmosphere that is enhanced by the south-facing aspect, allowing natural light to flood the interior. The flat features a well-appointed reception room, perfect for relaxation or entertaining guests. The kitchen is equipped with a built-in fridge freezer and dishwasher, ensuring that daily tasks are made effortless.

The bedroom is generously sized, providing a peaceful retreat at the end of the day. Ample storage throughout the flat ensures that your belongings can be neatly organised. Additionally, the property boasts a low-maintenance garden with a delightful decking area, perfect for enjoying the outdoors in the warmer months.

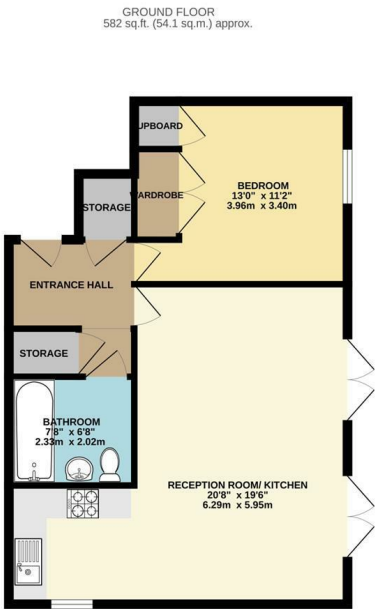
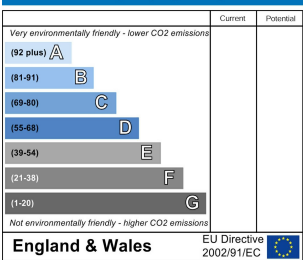
With its own front door and an allocated parking space, this flat offers both privacy and convenience. The prime location on St. Marys Island means you are just a stone's throw away from local amenities and transport links, making it an ideal choice for those who value accessibility.

This property, built in 2002, is a wonderful opportunity for anyone looking to settle in a vibrant community. Viewing is highly recommended to fully appreciate all that this lovely flat has to offer.

Energy Efficiency Rating



Environmental Impact (CO₂) Rating



TOTAL FLOOR AREA: 582 sq.ft. (54.1 sq.m.) approx.
 While every attempt has been made to ensure the accuracy of the floorplan, measurements of actual wall-to-wall and end-to-end dimensions are approximate and may vary slightly from those shown on this plan. This plan is for illustrative purposes only and should be used as such by any prospective purchaser. The services, systems and appliances shown hereon have not been tested and the purchaser is to their own satisfaction or otherwise to be satisfied.
 Made with Metaphor (2020)

Martin & Co Medway Lettings
 161 High Street, Rochester, Kent, ME1 1EH
 01634 838700 . medway@martinco.com

01634 838700
<http://www.martinco.com>



Accuracy: References to the Tenure of a Property are based on information supplied by the Seller. The Agent has not had sight of the title documents. A Buyer is advised to obtain verification from their Solicitor. Items shown in photographs including but not limited to carpets, fixtures and fittings are not included unless specifically mentioned within the sales particulars. They may however be available by separate negotiation. Buyers must check the availability of any property and make an appointment to view before embarking on any journey to see a property. No person in the employment of the agent has any authority to make any representation about the property, and accordingly any information given is entirely without responsibility on the part of the agents, sellers(s) or lessors(s). Any property particulars are not an offer or contract, nor form part of one. **Sonic / laser Tape:** Measurements taken using a sonic / laser tape measure may be subject to a small margin of error. **All Measurements:** All Measurements are Approximate. **Services Not tested:** The Agent has not tested any apparatus, equipment, Fixtures and Fittings or services and so cannot verify that they are in working order or fit for the purpose. A Buyer is advised to obtain verification from their Solicitor or Surveyor.

