



**Mount Road, Chatham**

**3 Bedroom, 1 Bathroom, House - Mid Terrace**

**£255,000**





For sale is this delightful 3-bedroom terraced house, located in a highly desirable area with fantastic public transport links, nearby schools, and a range of local amenities. This property is ideal for first-time buyers, investors, and families alike, offering a wonderful balance of comfort, convenience, and potential for personalisation to meet your unique needs.



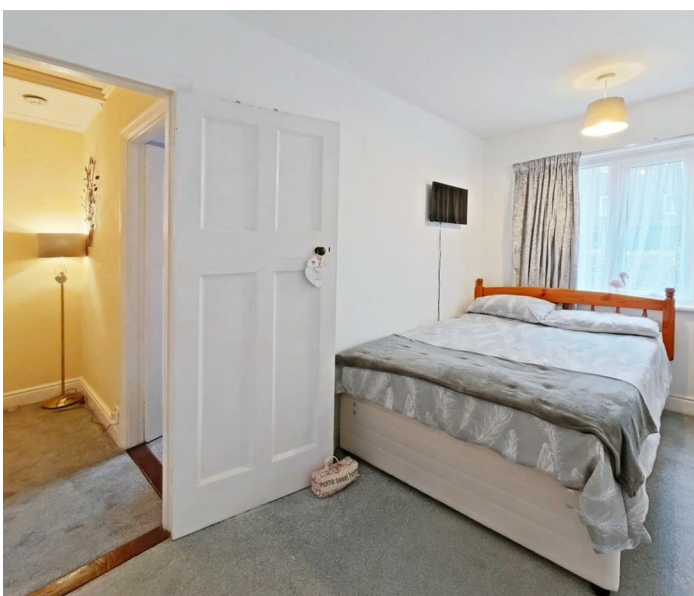
The home features a single well-sized reception room, providing a warm and inviting space for relaxation or for entertaining guests. This flows seamlessly into the kitchen, which benefits from an abundance of natural light, creating a bright and airy atmosphere that is sure to inspire your culinary adventures.

Upstairs, you'll find three bedrooms that offer a good degree of flexibility, whether you need space for a growing family, a home office, or guest rooms. Completing the internal accommodation is a family bathroom, providing all the essentials for daily life.

The property currently holds a 'C' EPC rating and falls within council tax band 'B', providing added peace of mind regarding energy efficiency and affordability.

In conclusion, this 3-bedroom terraced house offers a fantastic opportunity to acquire a charming home in a convenient location. With its generous accommodation and potential to add your own personal touch, it's sure to attract a great deal of interest. Contact us today to arrange a viewing and see for yourself what this property has to offer.

Broadband: Available - Standard, Superfast, Ultrafast  
Mobile Data: EE, Three, O2, Vodafone - Likely  
Flood Risk: Low Surface Water and Low chances of flooding

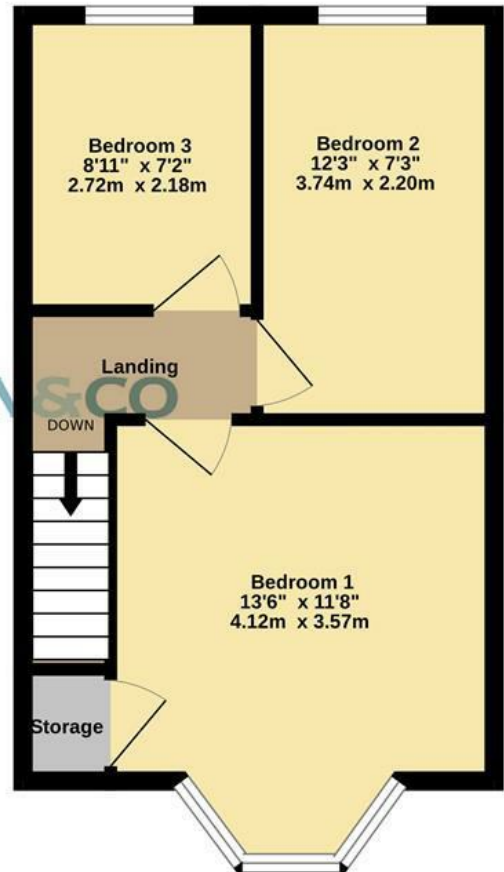
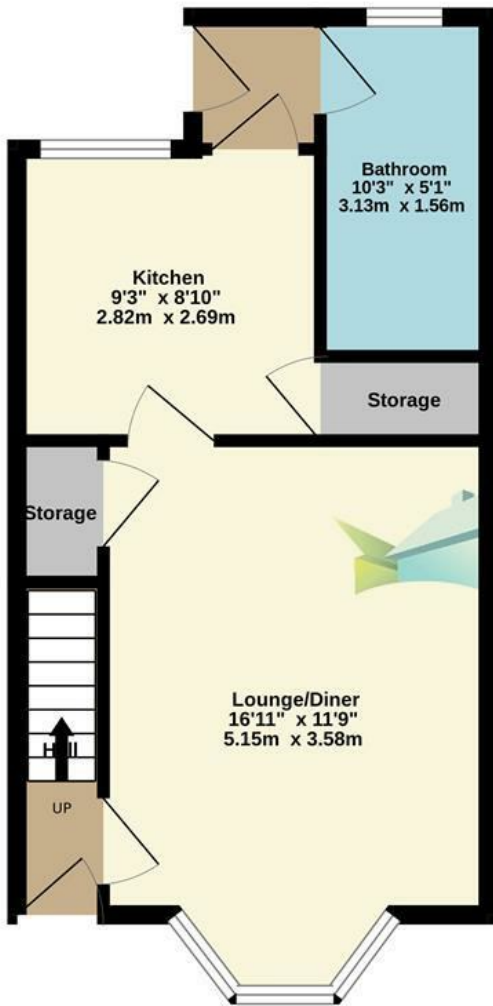






Ground Floor  
383 sq.ft. (35.6 sq.m.) approx.

1st Floor  
347 sq.ft. (32.2 sq.m.) approx.



MARTIN & CO

TOTAL FLOOR AREA : 730 sq.ft. (67.8 sq.m.) approx.  
Made with Metropix ©2025

Martin & Co Medway Lettings  
161 High Street, Rochester, Kent, ME1 1EH  
01634 838700 . medway@martinco.com

01634 838700  
<http://www.martinco.com>



**Accuracy:** References to the Tenure of a Property are based on information supplied by the Seller. The Agent has not had sight of the title documents. A Buyer is advised to obtain verification from their Solicitor. Items shown in photographs including but not limited to carpets, fixtures and fittings are not included unless specifically mentioned within the sales particulars. They may however be available by separate negotiation. Buyers must check the availability of any property and make an appointment to view before embarking on any journey to see a property. No person in the employment of the agent has any authority to make any representation about the property, and accordingly any information given is entirely without responsibility on the part of the agents, sellers(s) or lessors(s). Any property particulars are not an offer or contract, nor form part of one. **Sonic / laser Tape:** Measurements taken using a sonic / laser tape measure may be subject to a small margin of error. **All Measurements:** All Measurements are Approximate. **Services Not tested:** The Agent has not tested any apparatus, equipment, fixtures and fittings or services and so cannot verify that they are in working order or not for the purpose. A Buyer is advised to obtain verification from their Solicitor or Surveyor.

