



Upbury Way, Chatham

£1,450 PCM



MARTIN&CO


Upbury Way, Chatham

Date Available: 29th December 2025

Deposit: £1,673
Unfurnished

- Two double, one single bedroom
- Convenient for Chatham station
- Newly decorated throughout
- Bright, spacious kitchen
- Thru lounge with large windows
- Fully Double Glazed
- Bathroom with white suite
- Private, low-maintenance garden
- Gas central heating
- Ideal for small family or couple

Energy Efficiency Rating		
	Current	Potential
Very energy efficient - lower running costs		
(92 plus) A		81
(81-91) B		
(69-80) C		
(55-68) D		
(39-54) E		
(21-38) F	55	69
(1-20) G		
Not energy efficient - higher running costs		
England & Wales		EU Directive 2002/91/EC
		

Environmental Impact (CO ₂) Rating		
	Current	Potential
Very environmentally friendly - lower CO ₂ emissions		
(92 plus) A		69
(81-91) B		
(69-80) C		
(55-68) D		
(39-54) E		
(21-38) F	54	69
(1-20) G		
Not environmentally friendly - higher CO ₂ emissions		
England & Wales		EU Directive 2002/91/EC
		

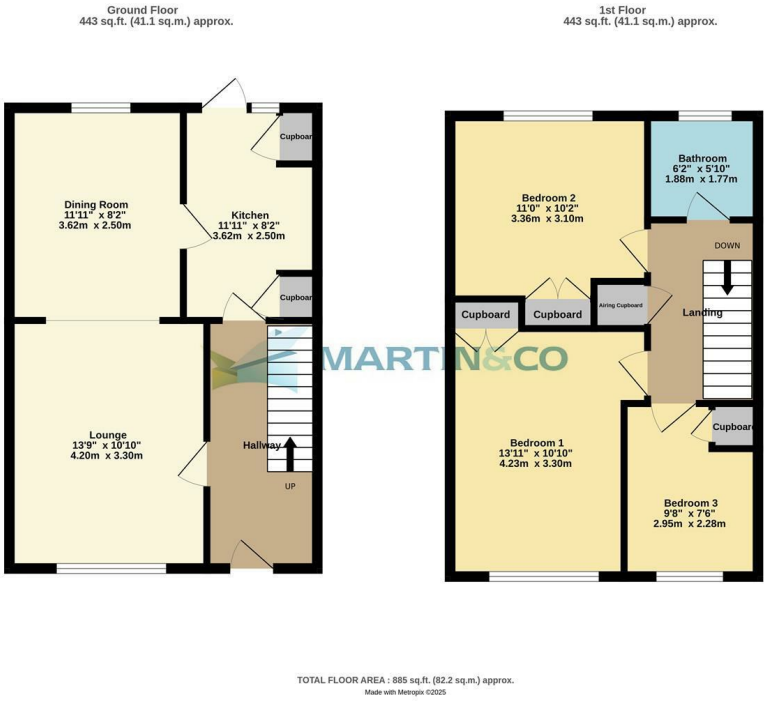
Nestled in the heart of Chatham on Upbury Way, this charming mid-terrace house offers a delightful blend of comfort and convenience. Built in 1960, the property has been newly decorated, presenting a fresh and inviting atmosphere for its new occupants.

As you enter, you are greeted by a bright and spacious fitted kitchen, complete with an integral oven and hob, perfect for culinary enthusiasts. The generous thru lounge and dining room boasts large windows in both areas, flooding the space with natural light and creating an airy ambiance ideal for relaxation or entertaining guests.

The first floor features two well-proportioned double bedrooms, alongside a good-sized single room, making it an excellent choice for a small family or couple. The bathroom is fitted with a modern white suite, ensuring a clean and contemporary feel.

Outside, the rear garden serves as a lovely private retreat, offering a low-maintenance area for outdoor entertaining or simply enjoying the fresh air. The property is fully double-glazed and benefits from gas central heating, ensuring warmth and comfort throughout the year.

With its prime location, this home is conveniently situated near Chatham station and the town centre, providing easy access to local amenities and transport links. This property is a wonderful opportunity for those seeking a comfortable and stylish living space in a vibrant community.



Martin & Co Medway Lettings
161 High Street, Rochester, Kent, ME1 1EH
01634 838700 . medway@martinco.com

01634 838700
<http://www.martinco.com>



Accuracy: References to the Tenure of a Property are based on information supplied by the Seller. The Agent has not had sight of the title documents. A Buyer is advised to obtain verification from their Solicitor. Items shown in photographs including but not limited to carpets, fixtures and fittings are not included unless specifically mentioned within the sales particulars. They may however be available by separate negotiation. Buyers must check the availability of any property and make an appointment to view before embarking on any journey to see a property. No person in the employment of the agent has any authority to make any representation about the property, and accordingly any information given is entirely without responsibility on the part of the agents, sellers(s) or lessors(s). Any property particulars are not an offer or contract, nor form part of one. **Sonic / laser Tape:** Measurements taken using a sonic / laser tape measure may be subject to a small margin of error. **All Measurements:** All Measurements are Approximate. **Services Not tested:** The Agent has not tested any apparatus, equipment, Fixtures and Fittings or services and so cannot verify that they are in working order or fit for the purpose. A Buyer is advised to obtain verification from their Solicitor or Surveyor.

