

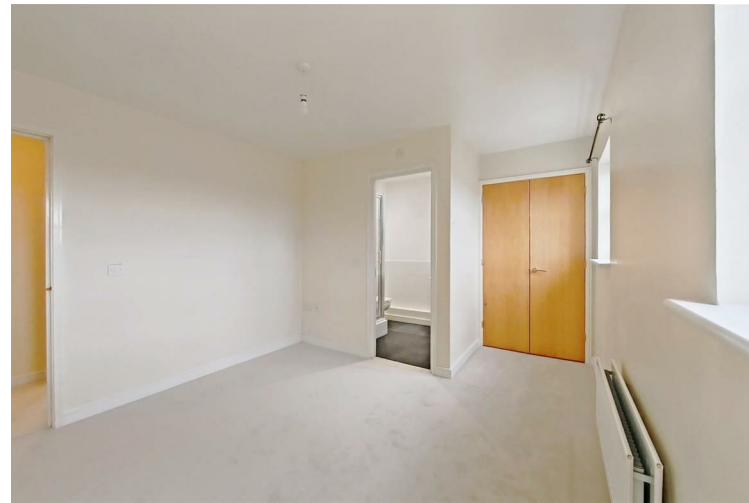
**Sandpiper Close, Waterstone Park**

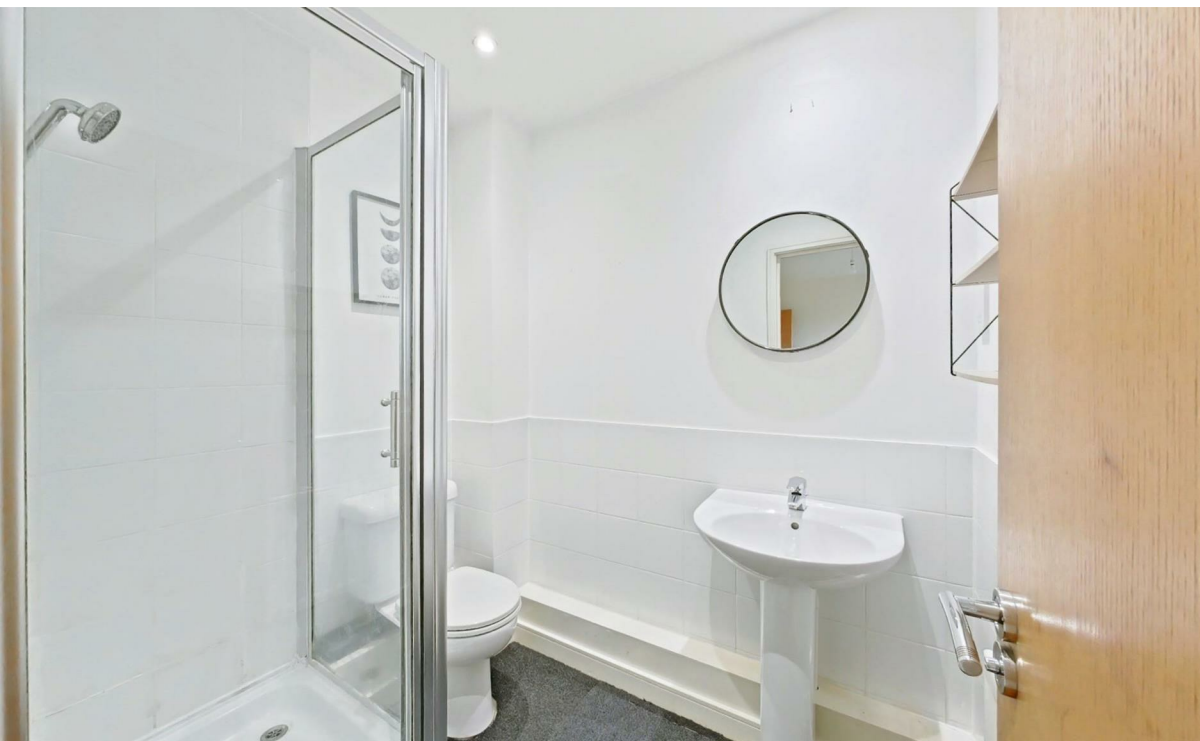
**£229,000**


  
**MARTIN & CO**


- TWO DOUBLE BEDROOMS
- EN-SUITE SHOWER ROOM
- MODERN KITCHEN AND BATHROOM
- SPACIOUS LOUNGE AND SEPARATE KITCHEN
- JULIET BALCONY
- ONE ALLOCATED PARKING SPACE
- CLOSE TO BLUEWATER SHOPPING CENTRE
- EASY ACCESS TO A2/M25/DARTFORD BRIDGE
- WALKING DISTANCE TO GREENHITHE MAIN LINE STATION
- NO CHAIN







Energy Efficiency Rating		
	Current	Potential
<i>Very energy efficient - lower running costs</i>		
(92 plus) <b>A</b>		
(81-91) <b>B</b>	<b>81</b>	<b>81</b>
(69-80) <b>C</b>		
(55-68) <b>D</b>		
(39-54) <b>E</b>		
(21-38) <b>F</b>		
(1-20) <b>G</b>		
<i>Not energy efficient - higher running costs</i>		
<b>England &amp; Wales</b>	EU Directive 2002/91/EC 	

Environmental Impact (CO <sub>2</sub> ) Rating		
	Current	Potential
<i>Very environmentally friendly - lower CO<sub>2</sub> emissions</i>		
(92 plus) <b>A</b>		
(81-91) <b>B</b>	<b>81</b>	<b>81</b>
(69-80) <b>C</b>		
(55-68) <b>D</b>		
(39-54) <b>E</b>		
(21-38) <b>F</b>		
(1-20) <b>G</b>		
<i>Not environmentally friendly - higher CO<sub>2</sub> emissions</i>		
<b>England &amp; Wales</b>	EU Directive 2002/91/EC 	

Approximate Gross Internal Area  
58 sq m / 624 sq ft

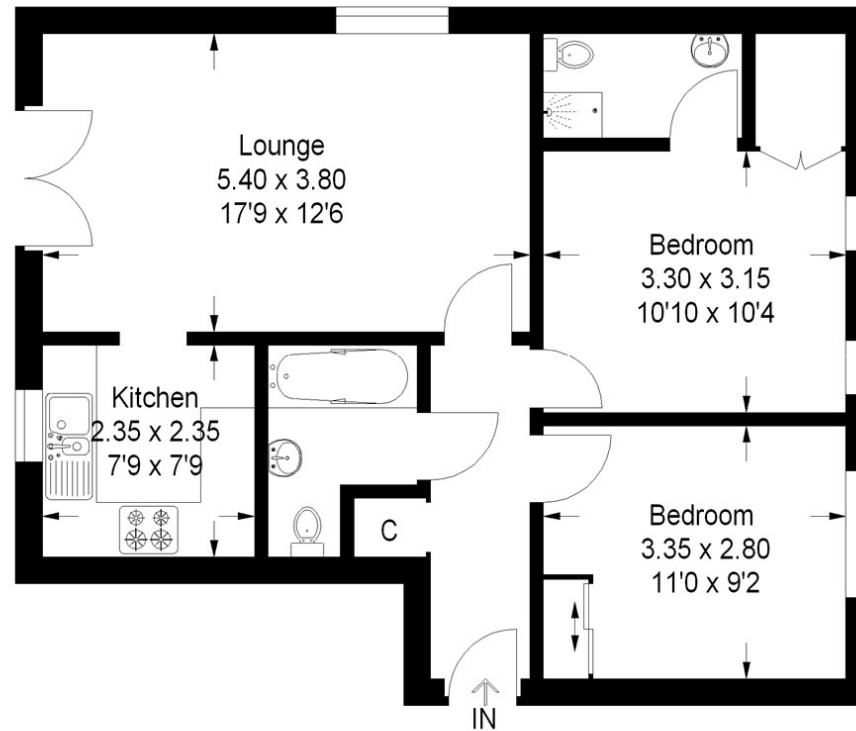


Illustration For Identification Purposes Only. Not To Scale (ID111303 / Ref:41116)

Martin & Co Medway Lettings  
161 High Street, Rochester, Kent, ME1 1EH  
01634 838700 . medway@martinco.com

01634 838700  
<http://www.martinco.com>



**Accuracy:** References to the Tenure of a Property are based on information supplied by the Seller. The Agent has not had sight of the title documents. A Buyer is advised to obtain verification from their Solicitor. Items shown in photographs including but not limited to carpets, fixtures and fittings are not included unless specifically mentioned within the sales particulars. They may however be available by separate negotiation. Buyers must check the availability of any property and make an appointment to view before embarking on any journey to see a property. No person in the employment of the agent has any authority to make any representation about the property, and accordingly any information given is entirely without responsibility on the part of the agents, sellers(s) or lessors(s). Any property particulars are not an offer or contract, nor form part of one. **Sonic / laser Tape:** Measurements taken using a sonic / laser tape measure may be subject to a small margin of error. **All**

**Measurements:** All Measurements are Approximate. **Services Not tested:** The Agent has not tested any apparatus, equipment, Fixtures and Fittings or services and so cannot verify that they are in working order or fit for the purpose. A Buyer is advised to obtain verification from their Solicitor or Surveyor.

