



Marina Point East, Dock Head Road

£1,350 Per Month


MARTIN & CO

Marina Point East, Dock Head Road

Date Available: 16th March 2026
 Deposit: £1,557
 Unfurnished

- Stunning refurbished apartment
- Two double bedrooms.
- Unfurnished 13th floor flat.
- Amazing river views.
- Bright, spacious living room.
- L-shaped fitted kitchen.
- Main bedroom en-suite.
- Secure underground parking.
- Near Medway Tunnel.
- Viewing highly recommended.

Energy Efficiency Rating		Current	Potential
Very energy efficient - lower running costs			
(92 plus) A			
(81-91) B			
(69-80) C			
(55-68) D		57	57
(39-54) E			
(21-38) F			
(1-20) G			
Not energy efficient - higher running costs			
England & Wales		EU Directive 2002/91/EC	

Environmental Impact (CO ₂) Rating		Current	Potential
Very environmentally friendly - lower CO ₂ emissions			
(92 plus) A			
(81-91) B			
(69-80) C			
(55-68) D			
(39-54) E			
(21-38) F			
(1-20) G			
Not environmentally friendly - higher CO ₂ emissions			
England & Wales		EU Directive 2002/91/EC	

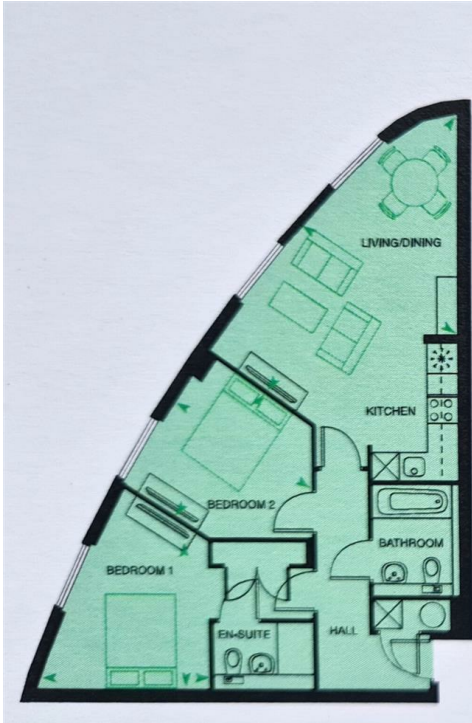
Welcome to Apartment Marina Point East, a modern flat situated on the 13th floor, offering breathtaking views of the River Medway. This unfurnished apartment features two spacious double bedrooms and two well-appointed bathrooms, making it an ideal choice for professionals or small families seeking comfort and convenience.

As you enter, you are greeted by a bright and airy reception room, enhanced by large floor-to-ceiling windows that showcase the stunning marina views. The open-plan living area seamlessly integrates with an L-shaped fitted kitchen, which is equipped with essential appliances including an integral oven, ceramic hob, fridge-freezer, and dishwasher. A washer/dryer is conveniently located in a large cupboard in the hallway, ensuring practicality in your daily routine.

The main bedroom boasts a generous built-in wardrobe and an en-suite shower room, complete with a double-sized cubicle and mirrored wall cupboards. The second bedroom also benefits from ample natural light, thanks to its large window. The main bathroom features a bath with an over-bath shower and additional mirrored storage, catering to all your needs.

This apartment is thoughtfully pre-wired for sound systems and includes a communal TV aerial with cabling for Sky, ensuring you stay connected and entertained. An allocated parking space in the secure underground car park adds to the convenience of this property.

Located within easy reach of the Medway Tunnel, Medway Maritime Hospital, and both Greenwich and Kent Universities, this apartment is perfectly positioned for those who value accessibility. The Dockside Outlet Centre, with its array of shops, restaurants, a gym, and a cinema, is just a short walk away.



2 BED APARTMENT WITH EN-SUITE*

Marina Point East Apartment Nos: 7, 13, 19, 25, 31, 37, 43, 49, 55, 61, 67, 73, 79, 85, 91
 Handed: 8, 14, 20, 26, 32, 38, 44, 50, 56, 62, 68, 74, 80, 86, 92

Marina Point West Apartment Nos: 7, 13, 19, 25, 31, 37, 43, 49, 55, 61, 67, 73, 79, 85, 91, 97, 103, 109, 115

Handed: 8, 14, 20, 26, 32, 38, 44, 50, 56, 62, 68, 74, 80, 86, 92, 98, 104, 110, 116

Living/dining/kitchen	7.07m x 3.90m	23'2" x 12'10"
Bedroom 1	3.71m x 3.13m	12'2" x 10'3"
Bedroom 2	3.46m x 3.23m	11'4" x 10'7"
Total area including hallway 67.40 sqm (725 sqft)		

Martin & Co Medway Lettings
 161 High Street, Rochester, Kent, ME1 1EH
 01634 838700 . medway@martinco.com

01634 838700
<http://www.martinco.com>



Accuracy: References to the Tenure of a Property are based on information supplied by the Seller. The Agent has not had sight of the title documents. A Buyer is advised to obtain verification from their Solicitor. Items shown in photographs including but not limited to carpets, fixtures and fittings are not included unless specifically mentioned within the sales particulars. They may however be available by separate negotiation. Buyers must check the availability of any property and make an appointment to view before embarking on any journey to see a property. No person in the employment of the agent has any authority to make any representation about the property, and accordingly any information given is entirely without responsibility on the part of the agents, sellers(s) or lessors(s). Any property particulars are not an offer or contract, nor form part of one. **Sonic / laser Tape:** Measurements taken using a sonic / laser tape measure may be subject to a small margin of error. **All**

Measurements: All Measurements are Approximate. **Services Not tested:** The Agent has not tested any apparatus, equipment, Fixtures and Fittings or services and so cannot verify that they are in working order or fit for the purpose. A Buyer is advised to obtain verification from their Solicitor or Surveyor.

