



Stafford Street, Gillingham, Kent


£1,250 PCM


MARTIN&CO

Stafford Street, Gillingham, Kent

Date Available: 1st August 2025
Deposit: £1,442
Unfurnished
Council Tax Band: B

- Two double bedrooms
- Separate lounge and dining room
- Spacious garden
- Popular rental
- Basement for storage
- Close to amenities
- Handy for hospital
- Good public transport links
- Flexible accommodation
- Available 1st August 2025

Energy Efficiency Rating		
	Current	Potential
Very energy efficient - lower running costs		
(92 plus) A		85
(81-91) B		
(69-80) C		
(55-68) D	63	
(39-54) E		
(21-38) F		
(1-20) G		
Not energy efficient - higher running costs		
England & Wales		EU Directive 2002/91/EC 

Environmental Impact (CO ₂) Rating		
	Current	Potential
Very environmentally friendly - lower CO ₂ emissions		
(92 plus) A		
(81-91) B		
(69-80) C		
(55-68) D		
(39-54) E		
(21-38) F		
(1-20) G		
Not environmentally friendly - higher CO ₂ emissions		
England & Wales		EU Directive 2002/91/EC 

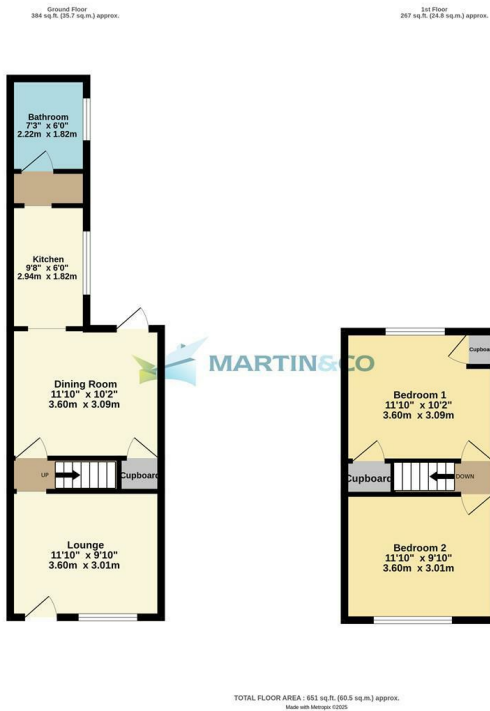
Nestled in the heart of Gillingham, Kent, this charming mid-terrace house on Stafford Street offers a delightful blend of character and modern living. Built in the 1920s, the property retains much of its original charm while providing the comfort and convenience expected in today's homes.

Upon entering, you are welcomed by two spacious reception rooms, perfect for entertaining guests or enjoying quiet evenings with family. The layout is both practical and inviting, allowing for a seamless flow between the living spaces. The two well-proportioned bedrooms provide ample room for relaxation, making this home ideal for couples, small families, or those seeking a comfortable retreat.

The property features a well-appointed bathroom, ensuring that all your daily needs are met with ease. Additionally, on-street parking is available, providing convenience for residents and visitors alike.

Situated in a popular location, this home benefits from easy access to local amenities, schools, and transport links, making it an excellent choice for those looking to enjoy the vibrant community of Gillingham.

In summary, this mid-terrace house on Stafford Street is a delightful find, combining period features with modern comforts in a sought-after location. Don't miss the opportunity to make this lovely house your new home.



Martin & Co Medway Lettings
161 High Street, Rochester, Kent, ME1 1EH
01634 838700 . medway@martinco.com

01634 838700
<http://www.martinco.com>



Accuracy: References to the Tenure of a Property are based on information supplied by the Seller. The Agent has not had sight of the title documents. A Buyer is advised to obtain verification from their Solicitor. Items shown in photographs including but not limited to carpets, fixtures and fittings are not included unless specifically mentioned within the sales particulars. They may however be available by separate negotiation. Buyers must check the availability of any property and make an appointment to view before embarking on any journey to see a property. No person in the employment of the agent has any authority to make any representation about the property, and accordingly any information given is entirely without responsibility on the part of the agents, sellers(s) or lessors(s). Any property particulars are not an offer or contract, nor form part of one. **Sonic / laser Tape:** Measurements taken using a sonic / laser tape measure may be subject to a small margin of error. **All Measurements:** All Measurements are Approximate. **Services Not tested:** The Agent has not tested any apparatus, equipment, Fixtures and Fittings or services and so cannot verify that they are in working order or fit for the purpose. A Buyer is advised to obtain verification from their Solicitor or Surveyor.

