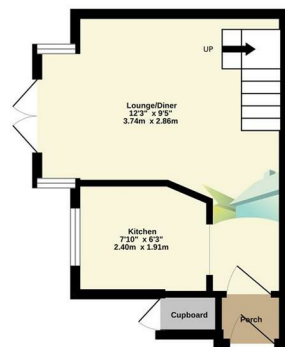


Ground Floor
237 sq.ft. (22.0 sq.m.) approx.

1st Floor
211 sq.ft. (19.6 sq.m.) approx.



MARTIN&CO



TOTAL FLOOR AREA : 449 sq.ft. (41.7 sq.m.) approx.
Made with Metropex 12025

Yeates Drive, Sittingbourne

1 Bedroom Terraced House

Guide Price £165,000



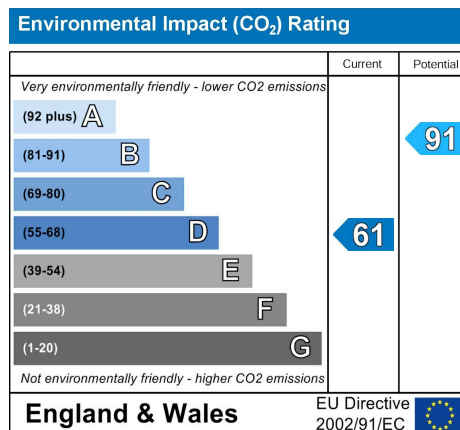
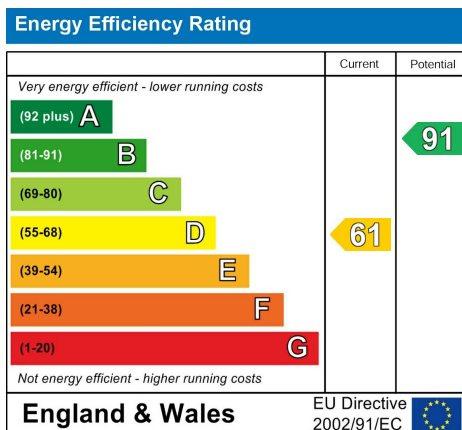
- No Chain
- Perfect for First Time Buyers
- Calling Investors
- 1 Bedroom House
- Green Location
- Parking For 1 vehicle
- EPC D
- Council Tax B

Kitchen
7'10" x 6'3"

Lounge/Diner
12'3" x 9'4"

Bedroom 1
12'3" x 9'4"

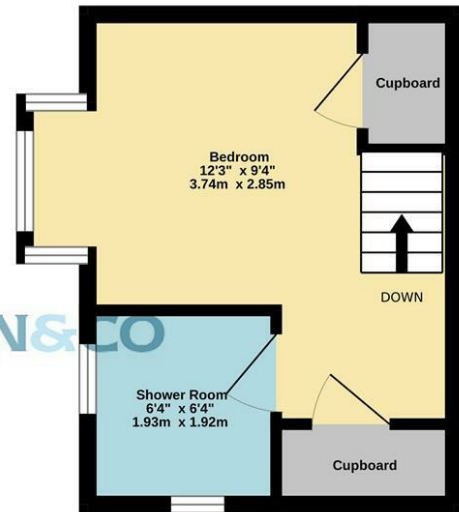
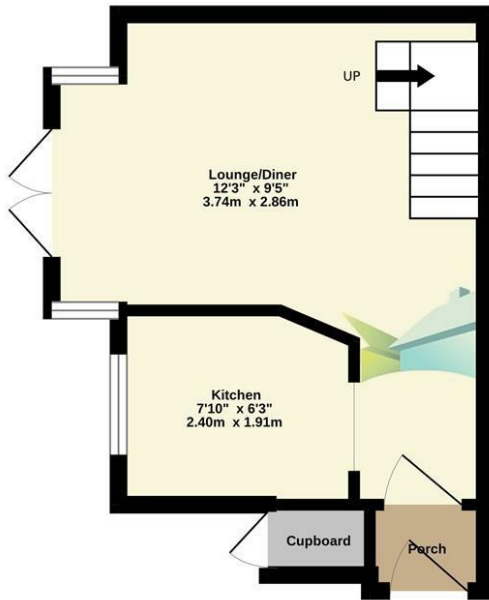
Bathroom
6'3" x 6'3"





Ground Floor
237 sq.ft. (22.0 sq.m.) approx.

1st Floor
211 sq.ft. (19.6 sq.m.) approx.



MARTIN&CO

TOTAL FLOOR AREA : 449 sq.ft. (41.7 sq.m.) approx.
Made with Metropix ©2025

