



**Juniper Way, Witham St. Hughs,
Lincoln**

£1,400 Per Month


MARTIN & CO

Juniper Way, Witham St. Hughs, Lincoln

House - Detached

4 Bedrooms, 4 Bathroom

£1,400 Per Month

Date Available: 14th July 2025

Deposit: £1,615

Unfurnished

- Detached Family Home
- Village Location
- Two Reception Rooms
- Fitted Breakfast Kitchen with Utility Room
- Primary Bedroom with Ensuite
- Carport Off Road Parking
- Single Garage
- South Facing Rear Garden
- EPC Rating - C
- Council Tax Band - D

Four bedroom detached family home situated within the popular Witham St Hughs village, between Lincoln and Newark. Comprising internally of an entrance hall with WC, spacious living room, breakfast kitchen with a utility and separate dining room, four bedrooms, primary with ensuite and a bathroom.



Four bedroom detached family home situated within the popular Witham St Hughs village, between Lincoln and Newark. Comprising internally of an entrance hall with WC, spacious living room, breakfast kitchen with a utility and separate dining room, four bedrooms, primary with ensuite and a bathroom. Externally offering a South Facing rear garden with access to the single garage and carport plus a smaller garden to the front.

Witham St Hughs benefits from a range of local amenities to include a Co-op store, Bar / Restaurant, Hairdressers, Takeaways, Schooling and a Village Hall. Well positioned just off the A46 to allow convenient access both to Lincoln City or Newark Town.

Unfortunately we cannot accept smokers on this property.
 Pets may be considered on a case by case basis.

Length of tenancy - 6 months initial tenancy with a long term tenancy preferred.

EPC Rating - C
 Council tax band - D - North Kesteven

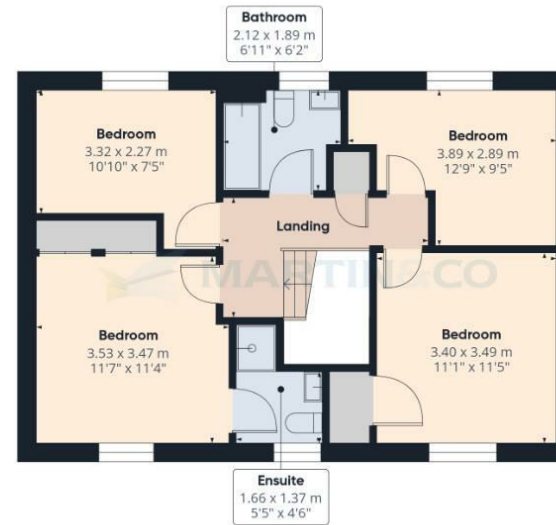


Energy Efficiency Rating		
	Current	Potential
Very energy efficient - lower running costs		
(92 plus) A		
(81-91) B		
(69-80) C		
(55-68) D		
(39-54) E		
(21-38) F		
(1-20) G		
Not energy efficient - higher running costs		
	78	87
England & Wales	EU Directive 2002/91/EC	EU Directive 2002/91/EC

Environmental Impact (CO ₂) Rating		
	Current	Potential
Very environmentally friendly - lower CO ₂ emissions		
(92 plus) A		
(81-91) B		
(69-80) C		
(55-68) D		
(39-54) E		
(21-38) F		
(1-20) G		
Not environmentally friendly - higher CO ₂ emissions		
England & Wales	EU Directive 2002/91/EC	EU Directive 2002/91/EC



Floor 0 Building 1



Floor 1 Building 1



Floor 0 Building 2

Approximate total area⁽¹⁾
138.4 m²
1489 ft²

(1) Excluding balconies and terraces

While every attempt has been made to ensure accuracy, all measurements are approximate, not to scale. This floor plan is for illustrative purposes only.

Calculations are based on RICS IPMS 3C standard.

GIRAFFE360

Martin & Co Lincoln Lettings
33 The Forum, North Hykeham, Lincoln, Lincolnshire, LN6
8HW
01522 503727 . lincoln@martinco.com

01522 503727
<http://www.martinco.com>

Accuracy: References to the Tenure of a Property are based on information supplied by the Seller. The Agent has not had sight of the title documents. A Buyer is advised to obtain verification from their Solicitor. Items shown in photographs including but not limited to carpets, fixtures and fittings are not included unless specifically mentioned within the sales particulars. They may however be available by separate negotiation. Buyers must check the availability of any property and make an appointment to view before embarking on any journey to see a property. No person in the employment of the agent has any authority to make any representation about the property, and accordingly any information given is entirely without responsibility on the part of the agents, sellers(s) or lessors(s). Any property particulars are not an offer or contract, nor form part of one. **Sonic / laser Tape:** Measurements taken using a sonic / laser tape measure may be subject to a small margin of error. **All**

Measurements: All Measurements are Approximate. **Services Not tested:** The Agent has not tested any apparatus, equipment, Fixtures and Fittings or services and so cannot verify that they are in working order or fit for the purpose. A Buyer is advised to obtain verification from their Solicitor or Surveyor.