



Monson Mews, Monson Street

£795 PCM


MARTIN&CO

Monson Mews, Monson Street

Apartment

2 Bedrooms, 2 Bathroom

£795 PCM

Date Available: 6th November
2025

Deposit: £917

Unfurnished

- Gas Central Heating
- Secure Entrance
- City Centre Location
- First Floor
- uPVC Double Glazing
- EPC - B
- Council tax - A

A well presented First Floor 2 bedroom apartment ideally located off the High Street. Briefly comprising; Entrance, open plan living with fitted kitchen and an array of appliances, 2 x bedrooms, bathroom and allocated parking for one vehicle.



DESCRIPTION
A well presented First Floor 2 bedroom apartment ideally located off the High Street. Briefly comprising; Entrance, open plan living with fitted kitchen and an array of appliances, 2 x bedrooms, bathroom and allocated parking for one vehicle.

Unfortunately this property is not suitable for pets or smokers
Initial 12 month tenancy
EPC - B
Council Tax - A - Lincoln City council

Mobile (based on calls indoors)
O2 EE Three Vodafone

Broadband (estimated speeds)
Standard 12 mbps
Superfast 74 mbps
Ultrafast 1800 mbps

Satellite & Cable TV Availability
BT Sky

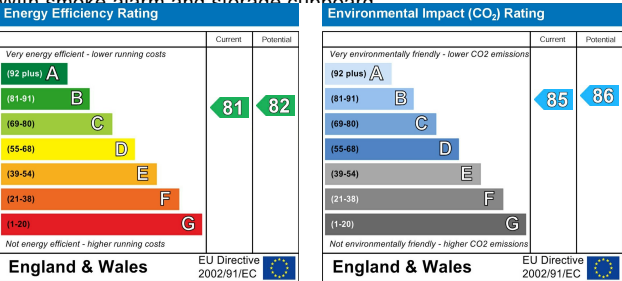
OPEN PLAN LOUNGE & KITCHEN
19'3" x 11'6"
Being lounge measurements, Kitchen measures 2.419 m x 2.985 into lounge wall with white uPVC window to rear aspect and a wall mounted radiator. Kitchen comprises stainless steel sink and drainer unit with mixer tap inset to dark grey roll edge work surfaces, range of matching beige cupboards and drawers, both at ground and eye level, four ring Candy gas hob and Candy integrated electric oven with extractor hood over, complementary grey ceramic tiles for splash backs, integrated Indesit washer/dryer, integrated Indesit fridge. Vinyl flooring and spot lights to ceiling.

BEDROOM 1
15'9" x 8'10" - 7'2" at its narrowest poi
With a white uPVC window and wall mounted radiator

BEDROOM 2
10'7" x 8'8"
Having a white uPVC window and wall mounted radiator

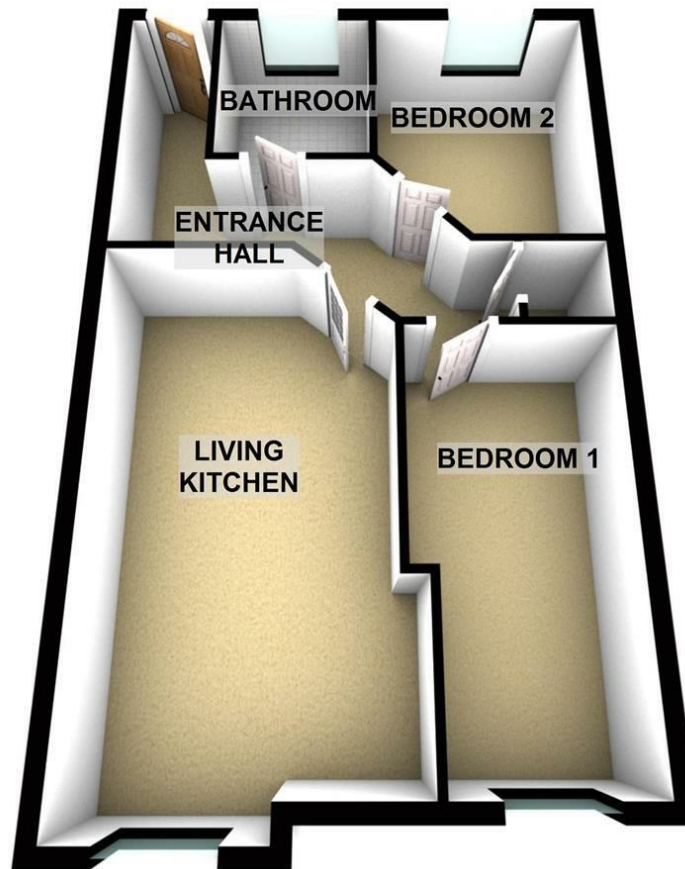
BATHROOM
Comprising a white 3 piece suite; low level w.c, wash basin with pedestal, and panelled bath with shower over. White ceramic tiles and extractor fan.

HALLWAY
With smoke alarm and storage cupboard



GROUND FLOOR

APPROX. 45.4 SQ. METRES (488.7 SQ. FEET)



TOTAL AREA: APPROX. 45.4 SQ. METRES (488.7 SQ. FEET)

The marketing plans shown are for guidance purposes only and are not to be relied upon for scale or accuracy.
Plan produced using The Mobile Agent.

Martin & Co Lincoln Lettings
33 The Forum, North Hykeham, Lincoln, Lincolnshire, LN6
8HW
01522 503727 . lincoln@martinco.com

01522 503727
<http://www.martinco.com>



Accuracy: References to the Tenure of a Property are based on information supplied by the Seller. The Agent has not had sight of the title documents. A Buyer is advised to obtain verification from their Solicitor. Items shown in photographs including but not limited to carpets, fixtures and fittings are not included unless specifically mentioned within the sales particulars. They may however be available by separate negotiation. Buyers must check the availability of any property and make an appointment to view before embarking on any journey to see a property. No person in the employment of the agent has any authority to make any representation about the property, and accordingly any information given is entirely without responsibility on the part of the agents, sellers(s) or lessors(s). Any property particulars are not an offer or contract, nor form part of one. **Sonic / laser Tape:** Measurements taken using a sonic / laser tape measure may be subject to a small margin of error. **All**

Measurements: All Measurements are Approximate. **Services Not tested:** The Agent has not tested any apparatus, equipment, Fixtures and Fittings or services and so cannot verify that they are in working order or fit for the purpose. A Buyer is advised to obtain verification from their Solicitor or Surveyor.