



**Wheatfield Road, Lincoln**

**£750 PCM**

  
**MARTIN&CO**



Wheatfield Road, Lincoln

Flat

2 Bedrooms, 2 Bathroom

£750 PCM

Date Available: 18th July 2025

Deposit: £865

Unfurnished

- Ground Floor Flat
- Off Road Parking
- Front and Rear Gardens
- Modern Fitted Kitchen
- Spacious Living Room
- Popular Residential Location
- EPC Rating - C
- Council Tax Band - A

Two bedroom ground floor flat in the popular residential area of Birchwood. Comprising internally of an open plan entrance hall, modern fitted kitchen, living room, bathroom and two bedrooms. Driveway to the front for off road parking plus gardens to the front and rear.



Two bedroom ground floor flat in the popular residential area of Birchwood. Comprising internally of an open plan entrance hall, modern fitted kitchen, living room, bathroom and two bedrooms. Driveway to the front for off road parking plus gardens to the front and rear.

Unfortunately we cannot accept smokers on this property.  
Pets may be considered on a case by case basis.

Length of tenancy - 12 months initial tenancy with a long term tenancy preferred.

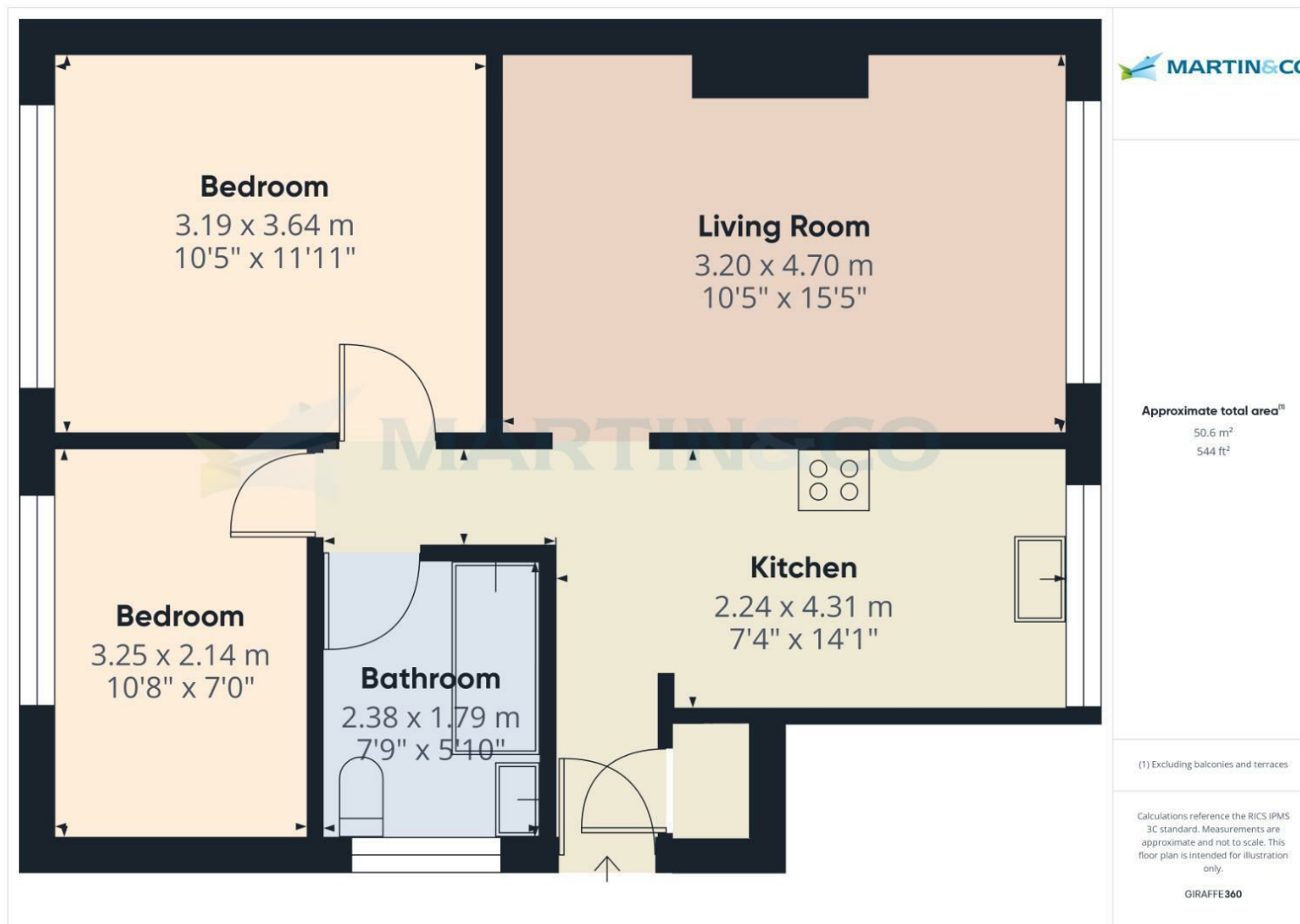
EPC Rating - C  
Council Tax Band - A - Lincoln



Energy Efficiency Rating		
	Current	Potential
Very energy efficient - lower running costs		
(92 plus) <b>A</b>		
(81-91) <b>B</b>		
(69-80) <b>C</b>		
(55-68) <b>D</b>		
(39-54) <b>E</b>		
(21-38) <b>F</b>		
(1-20) <b>G</b>		
Not energy efficient - higher running costs		
<b>England &amp; Wales</b>	71	74
EU Directive 2002/91/EC		

Environmental Impact (CO <sub>2</sub> ) Rating		
	Current	Potential
Very environmentally friendly - lower CO <sub>2</sub> emissions		
(92 plus) <b>A</b>		
(81-91) <b>B</b>		
(69-80) <b>C</b>		
(55-68) <b>D</b>		
(39-54) <b>E</b>		
(21-38) <b>F</b>		
(1-20) <b>G</b>		
Not environmentally friendly - higher CO <sub>2</sub> emissions		
<b>England &amp; Wales</b>		
EU Directive 2002/91/EC		





**Martin & Co Lincoln Lettings**  
33 The Forum, North Hykeham, Lincoln, Lincolnshire, LN6  
8HW  
01522 503727 . [lincoln@martinco.com](mailto:lincoln@martinco.com)

**01522 503727**  
**<http://www.martinco.com>**

**MARTIN&CO**

**Accuracy:** References to the Tenure of a Property are based on information supplied by the Seller. The Agent has not had sight of the title documents. A Buyer is advised to obtain verification from their Solicitor. Items shown in photographs including but not limited to carpets, fixtures and fittings are not included unless specifically mentioned within the sales particulars. They may however be available by separate negotiation. Buyers must check the availability of any property and make an appointment to view before embarking on any journey to see a property. No person in the employment of the agent has any authority to make any representation about the property, and accordingly any information given is entirely without responsibility on the part of the agents, sellers(s) or lessors(s). Any property particulars are not an offer or contract, nor form part of one. **Sonic / laser Tape:** Measurements taken using a sonic / laser tape measure may be subject to a small margin of error. **All**

**Measurements:** All Measurements are Approximate. **Services Not tested:** The Agent has not tested any apparatus, equipment, Fixtures and Fittings or services and so cannot verify that they are in working order or fit for the purpose. A Buyer is advised to obtain verification from their Solicitor or Surveyor.