



Riverside Drive, Lincoln

£850 Per Month


MARTIN&CO

Riverside Drive, Lincoln

Apartment

1 Bedrooms, 1 Bathroom

£850 Per Month

Date Available: 12th January
2026

Deposit: £980

Unfurnished

- Open Plan Living
- Large Bedroom
- Allocated Parking
- Situated Close to City Centre
- EPC Rating - B / Council Tax Band - A
- Well Presented throughout

One bedroom second floor apartment situated within walking distance to the city centre and benefitting from allocated parking for one vehicle. Comprising internally of an entrance hall, open plan living / kitchen, one bedroom and a bathroom. The Anchor Quay development is well situated being within walking distance to the Lincoln University and the High Street for a variety of amenities.



One bedroom second floor apartment situated within walking distance to the city centre and benefitting from allocated parking for one vehicle. Comprising internally of an entrance hall, open plan living / kitchen, one bedroom and a bathroom.

The Anchor Quay development is well situated being within walking distance to the Lincoln University and the High Street for a variety of amenities.

Unfortunately we are unable to accept pets or smokers on this property.

EPC Rating - B
Council Tax Band - A

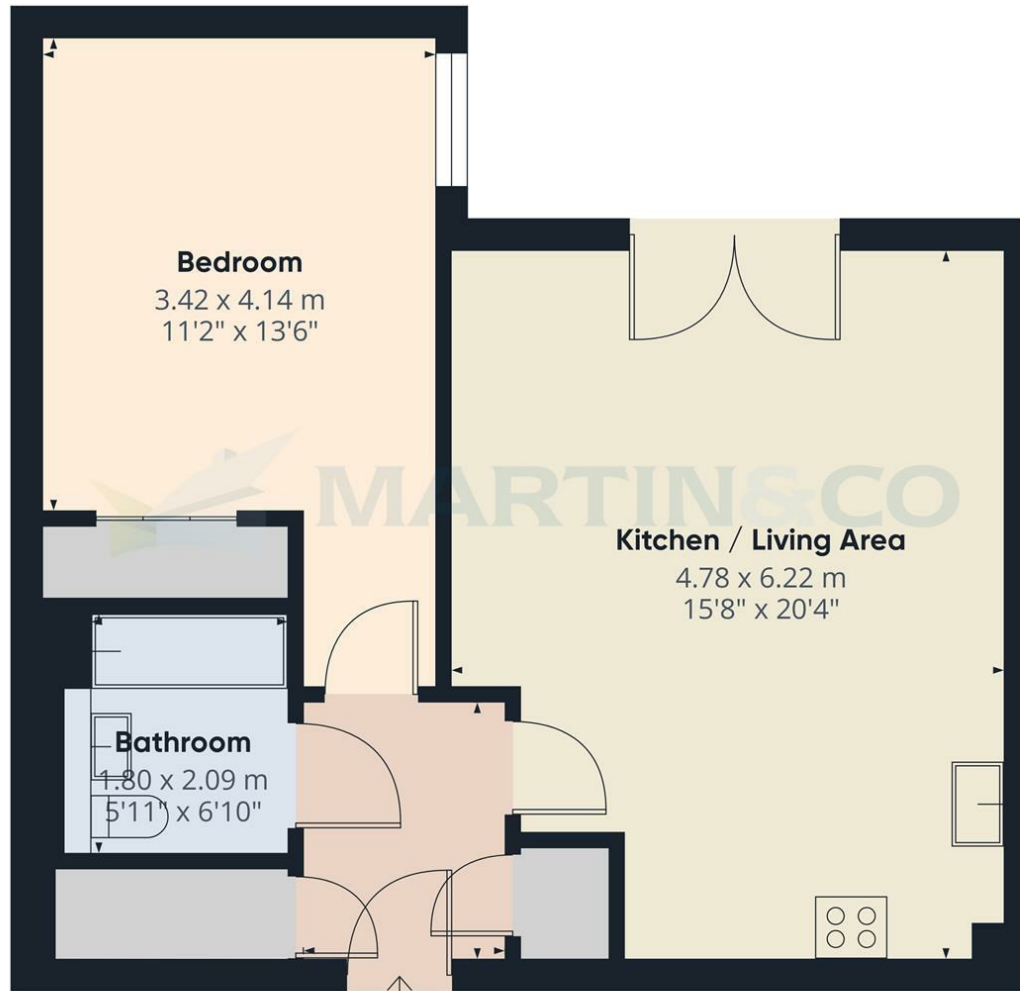
Standard 10 mbps
Superfast 80 mbps
Ultrafast Not Available

Indoor:
EE - Limited
THREE - Limited
O2 - Likely
VODAFONE - Likely
Outdoor:
EE - Likely
THREE - Likely
O2 - Likely
VODAFONE - Likely



Energy Efficiency Rating		
	Current	Potential
Very energy efficient - lower running costs		
(92 plus) A		
(81-91) B		
(69-80) C		
(55-68) D		
(39-54) E		
(21-38) F		
(1-20) G		
Not energy efficient - higher running costs		
	80	84
England & Wales	EU Directive 2002/91/EC	EU Directive 2002/91/EC

Environmental Impact (CO ₂) Rating		
	Current	Potential
Very environmentally friendly - lower CO ₂ emissions		
(92 plus) A		
(81-91) B		
(69-80) C		
(55-68) D		
(39-54) E		
(21-38) F		
(1-20) G		
Not environmentally friendly - higher CO ₂ emissions		
England & Wales	EU Directive 2002/91/EC	EU Directive 2002/91/EC



Approximate total area⁽¹⁾
55.6 m²
598 ft²

(1) Excluding balconies and terraces

Calculations reference the RICS IPMS 3C standard. Measurements are approximate and not to scale. This floor plan is intended for illustration only.

GIRAFFE360

Martin & Co Lincoln Lettings
33 The Forum, North Hykeham, Lincoln, Lincolnshire, LN6
8HW
01522 503727 . lincoln@martinco.com

01522 503727
<http://www.martinco.com>



Accuracy: References to the Tenure of a Property are based on information supplied by the Seller. The Agent has not had sight of the title documents. A Buyer is advised to obtain verification from their Solicitor. Items shown in photographs including but not limited to carpets, fixtures and fittings are not included unless specifically mentioned within the sales particulars. They may however be available by separate negotiation. Buyers must check the availability of any property and make an appointment to view before embarking on any journey to see a property. No person in the employment of the agent has any authority to make any representation about the property, and accordingly any information given is entirely without responsibility on the part of the agents, sellers(s) or lessors(s). Any property particulars are not an offer or contract, nor form part of one. **Sonic / laser Tape:** Measurements taken using a sonic / laser tape measure may be subject to a small margin of error. **All**

Measurements: All Measurements are Approximate. **Services Not tested:** The Agent has not tested any apparatus, equipment, Fixtures and Fittings or services and so cannot verify that they are in working order or fit for the purpose. A Buyer is advised to obtain verification from their Solicitor or Surveyor.