



**Crucible Close, North Hykeham,
Lincoln**

£1,450 Per Month


MARTIN&CO

Crucible Close, North Hykeham, Lincoln

House - Detached

4 Bedrooms, 4 Bathroom

£1,450 Per Month

Date Available: 20th January
2025

Deposit: £1,670

- Detached Family Home
- End Plot Position
- Parking for Multiple Vehicles
- Open Plan Living
- Conservatory
- Utility Room with Cloakroom
- Integral Garage
- Desirable Location
- EPC - B
- Council Tax Band - D

Extended four bedroom family home situated within this popular development just off Station Road. Boasting a spacious living room, modern open plan kitchen diner with conservatory, utility room and WC, ensuite bedroom, three further bedrooms and a family bathroom.



Extended four bedroom family home situated within this popular development just off Station Road. Boasting a spacious living room, modern open plan fully fitted kitchen diner with conservatory, utility room and WC, ensuite bedroom, three further bedrooms and a family bathroom. Driveway parking for multiple vehicles, front and rear gardens plus a single integral garage.

North Hykeham is situated to the south of the city, benefitting from a range of amenities including schooling of all ages, supermarkets, doctors' surgery, shops and much more. Regular bus service operates into Lincoln city centre with road and rail links also nearby.

Pets may be considered on a case by case basis. Unfortunately we cannot accept smokers on this property.

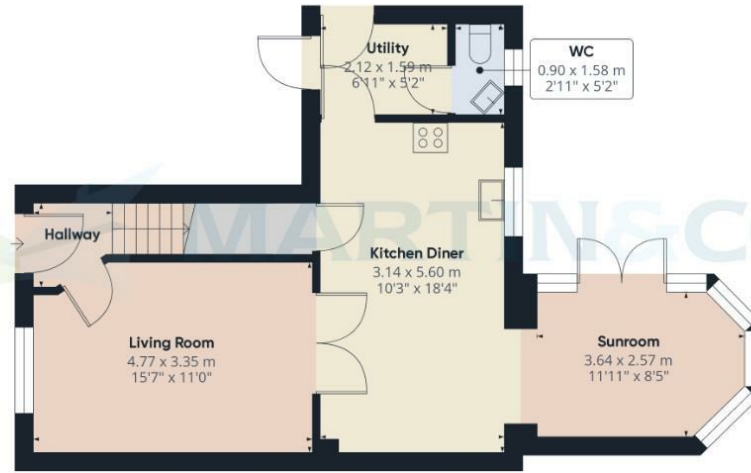
Length of tenancy - 12 months initial tenancy.

EPC Rating - B
 Council tax band - D - North Kesteven
 Mobile (based on calls indoors) - O2, Vodafone, EE, Three
 Broadband (estimated speeds) - 16mbps (Standard), 10000mbps (Ultrafast)
 Satellite & Cable TV Availability - BT, Sky, Virgin

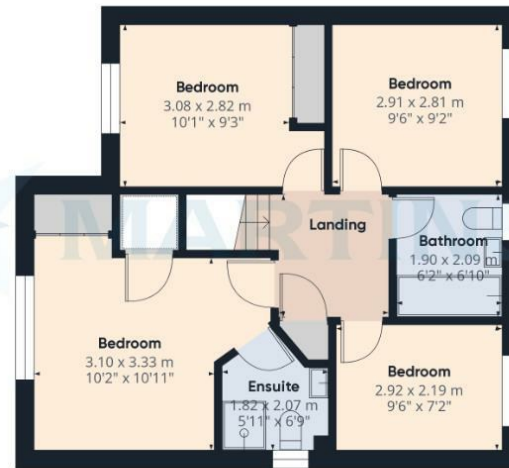


Energy Efficiency Rating		
	Current	Potential
Very energy efficient - lower running costs		93
(92 plus) A		
(81-91) B		83
(69-80) C		
(55-68) D		
(39-54) E		
(21-38) F		
(1-20) G		
Not energy efficient - higher running costs		
England & Wales	EU Directive 2002/91/EC	

Environmental Impact (CO ₂) Rating		
	Current	Potential
Very environmentally friendly - lower CO ₂ emissions		
(92 plus) A		
(81-91) B		
(69-80) C		
(55-68) D		
(39-54) E		
(21-38) F		
(1-20) G		
Not environmentally friendly - higher CO ₂ emissions		
England & Wales	EU Directive 2002/91/EC	



Floor 0



Floor 1

Approximate total area⁽¹⁾
 104.27 m²
 1122.35 ft²

(1) Excluding balconies and terraces

While every attempt has been made to ensure accuracy, all measurements are approximate, not to scale. This floor plan is for illustrative purposes only.

Calculations are based on RICS IPMS 3C standard.

GIRAFFE360

Martin & Co Lincoln Lettings
 33 The Forum, North Hykeham, Lincoln, Lincolnshire, LN6
 8HW
 01522 503727 . lincoln@martinco.com

01522 503727
<http://www.martinco.com>

Accuracy: References to the Tenure of a Property are based on information supplied by the Seller. The Agent has not had sight of the title documents. A Buyer is advised to obtain verification from their Solicitor. Items shown in photographs including but not limited to carpets, fixtures and fittings are not included unless specifically mentioned within the sales particulars. They may however be available by separate negotiation. Buyers must check the availability of any property and make an appointment to view before embarking on any journey to see a property. No person in the employment of the agent has any authority to make any representation about the property, and accordingly any information given is entirely without responsibility on the part of the agents, sellers(s) or lessors(s). Any property particulars are not an offer or contract, nor form part of one. **Sonic / laser Tape:** Measurements taken using a sonic / laser tape measure may be subject to a small margin of error. **All**

Measurements: All Measurements are Approximate. **Services Not tested:** The Agent has not tested any apparatus, equipment, Fixtures and Fittings or services and so cannot verify that they are in working order or fit for the purpose. A Buyer is advised to obtain verification from their Solicitor or Surveyor.