



Severus Crescent, North Hykeham

£1,700 Per Month


MARTIN&CO

Severus Crescent, North Hykeham

House - Detached
4 Bedrooms, 4 Bathroom

£1,700 Per Month

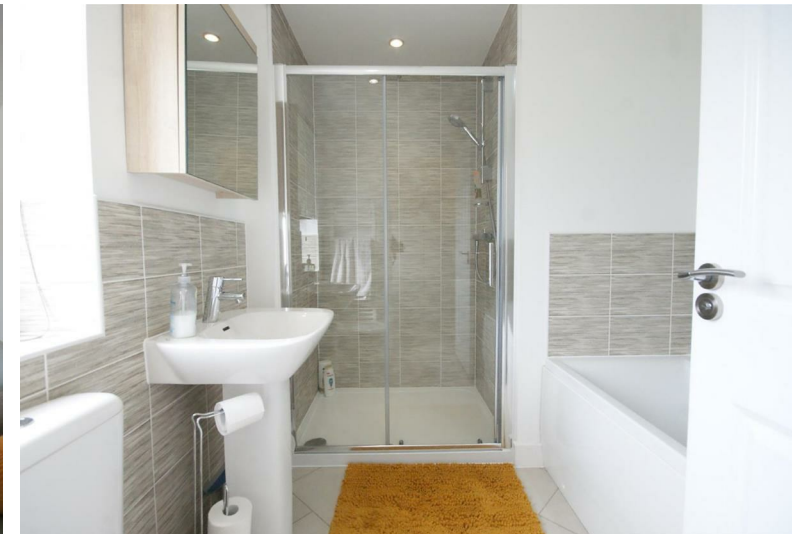
Date Available: 20th August 2025

Deposit: £1,961

Unfurnished

- Executive Family Home
- Four Double Bedrooms
- Fully Fitted Breakfast Kitchen
- Master Bedroom with Dressing Area
- Two Ensuite Bedrooms
- Lounge and Dining Room
- EPC - B
- Off Road Parking
- Double Garage
- Council tax E

RARE OPPORTUNITY to rent this **EXECUTIVE DETACHED FOUR BEDROOM FAMILY HOME**. Situated within the popular Manor Farm development in North Hykeham, this well presented home is not to be missed with benefits including two ensuite bedrooms, fully fitted kitchen, spacious rear garden and a double garage.



RARE OPPORTUNITY to rent this **EXECUTIVE DETACHED FOUR BEDROOM FAMILY HOME**. Situated within the popular Manor Farm development in North Hykeham, this well presented home is not to be missed.

Internally comprising of an entrance hall, cloakroom, study, dining room, lounge, fitted breakfast kitchen with a range of appliances and a separate utility room. The first floor offers four double bedrooms, two ensuites, master with a walk through dressing area and a family bathroom. Spacious rear garden, off road parking and a double garage.

Pets will be considered on a case by case basis. Unfortunately we cannot accept smokers on this property.

Length of tenancy - 12 month initial tenancy
Council tax band - E - North Kesteven

Broadband (estimated speeds)
Standard 4 mbps
Superfast 80 mbps
Ultrafast 10000 mbps

Satellite & Cable TV Availability
BT & SKY

Mobile (based on calls indoors)
02, EE, VODAFONE & THREE



Energy Efficiency Rating	
Current	Potential
85	92

Very energy efficient - lower running costs

Very energy inefficient - higher running costs

England & Wales EU Directive 2002/91/EC

Environmental Impact (CO ₂) Rating	
Current	Potential

Very environmentally friendly - lower CO₂ emissions

Not environmentally friendly - higher CO₂ emissions

England & Wales EU Directive 2002/91/EC

Martin & Co Lincoln Lettings
33 The Forum, North Hykeham, Lincoln, Lincolnshire, LN6
8HW
01522 503727 . lincoln@martinco.com

01522 503727
<http://www.martinco.com>



Accuracy: References to the Tenure of a Property are based on information supplied by the Seller. The Agent has not had sight of the title documents. A Buyer is advised to obtain verification from their Solicitor. Items shown in photographs including but not limited to carpets, fixtures and fittings are not included unless specifically mentioned within the sales particulars. They may however be available by separate negotiation. Buyers must check the availability of any property and make an appointment to view before embarking on any journey to see a property. No person in the employment of the agent has any authority to make any representation about the property, and accordingly any information given is entirely without responsibility on the part of the agents, sellers(s) or lessors(s). Any property particulars are not an offer or contract, nor form part of one. **Sonic / laser Tape:** Measurements taken using a sonic / laser tape measure may be subject to a small margin of error. **All**

Measurements: All Measurements are Approximate. **Services Not tested:** The Agent has not tested any apparatus, equipment, Fixtures and Fittings or services and so cannot verify that they are in working order or fit for the purpose. A Buyer is advised to obtain verification from their Solicitor or Surveyor.