



**Oulton Close, North Hykeham,
Lincoln**

£1,200 Per Month


MARTIN&CO

Oulton Close, North Hykeham, Lincoln

Bungalow - Detached
3 Bedrooms, 3 Bathroom

£1,200 Per Month

Date Available: 19th April 2024

Deposit: £1,384

Unfurnished

- Detached Bungalow
- 3 Bedrooms
- Kitchen / Diner
- Sunroom
- Single Garage
- Driveway Parking
- EPC - Grade D
- Council Tax Band - D

Three bedroom detached bungalow within Oulton Close in North Hykeham. Comprising of an entrance porch, three bedrooms, open plan kitchen and dining room, lounge, bathroom and a sunroom. Private rear garden, driveway parking and a garage.

Unfortunately we cannot accept smokers or pets on this property.

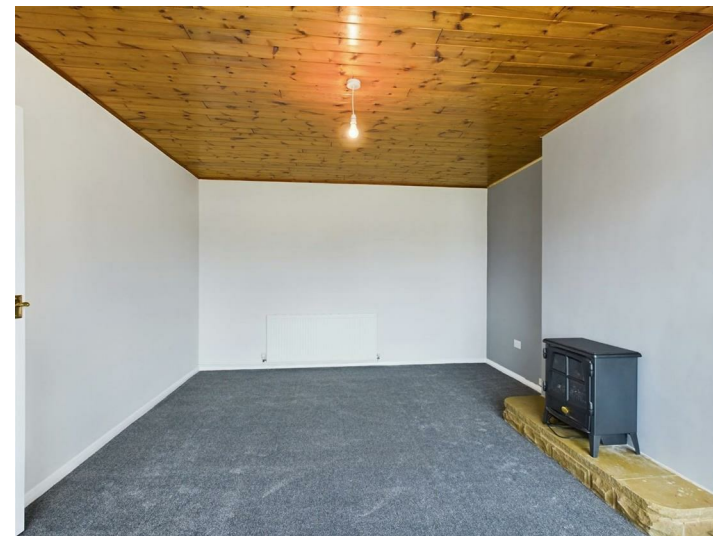
Mobile (based on calls indoors) - EE + O2 + Three + Vodafone

Broadband (estimated speeds) Standard 4 mbps / Superfast 67 mbps / Ultrafast 1000 mbps

Satellite & Cable TV Availability - BT + Sky + Virgin

Length of tenancy - 12 months initial tenancy
Council tax band - D - North Kesteven District Council

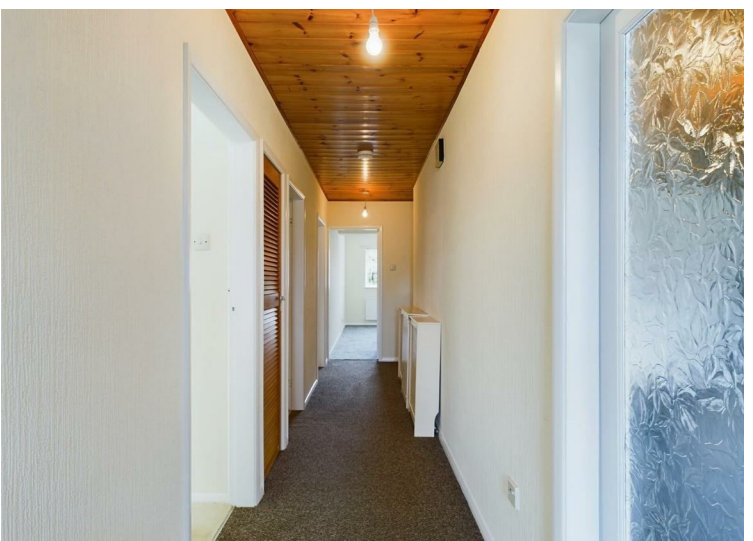
EPC rating - Grade D



Summary
 Three bedroom detached bungalow within Oulton Close in North Hykeham. Comprising of an entrance porch, three bedrooms, open plan kitchen and dining room, lounge, bathroom and a sunroom. Private rear garden, driveway parking and a garage.

North Hykeham offers easy access to local amenities to include shops and schooling of all ages, transport links with a regular bus route and being close to the A46 bypass and Hykeham train station.

Unfortunately we cannot accept smokers or pets on this property.
 Mobile (based on calls indoors) - EE + O2 + Three + Vodafone
 Broadband (estimated speeds) Standard 4 mbps / Superfast 67 mbps / Ultrafast 1000 mbps
 Satellite & Cable TV Availability - BT + Sky + Virgin
 Length of tenancy - 12 months initial tenancy
 Council tax band - D - North Kesteven District Council



Energy Efficiency Rating		
	Current	Potential
Very energy efficient - lower running costs		
(92 plus) A		
(81-91) B		
(69-80) C		
(55-68) D		
(39-54) E		
(21-38) F		
(1-20) G		
Not energy efficient - higher running costs		
		76
	60	
England & Wales	EU Directive 2002/91/EC	

Environmental Impact (CO ₂) Rating		
	Current	Potential
Very environmentally friendly - lower CO ₂ emissions		
(92 plus) A		
(81-91) B		
(69-80) C		
(55-68) D		
(39-54) E		
(21-38) F		
(1-20) G		
Not environmentally friendly - higher CO ₂ emissions		
England & Wales	EU Directive 2002/91/EC	



Martin & Co Lincoln Lettings
33 The Forum, North Hykeham, Lincoln, Lincolnshire, LN6
8HW
01522 503727 . lincoln@martinco.com

01522 503727
<http://www.martinco.com>

Accuracy: References to the Tenure of a Property are based on information supplied by the Seller. The Agent has not had sight of the title documents. A Buyer is advised to obtain verification from their Solicitor. Items shown in photographs including but not limited to carpets, fixtures and fittings are not included unless specifically mentioned within the sales particulars. They may however be available by separate negotiation. Buyers must check the availability of any property and make an appointment to view before embarking on any journey to see a property. No person in the employment of the agent has any authority to make any representation about the property, and accordingly any information given is entirely without responsibility on the part of the agents, sellers(s) or lessors(s). Any property particulars are not an offer or contract, nor form part of one. **Sonic / laser Tape:** Measurements taken using a sonic / laser tape measure may be subject to a small margin of error. **All**

Measurements: All Measurements are Approximate. **Services Not tested:** The Agent has not tested any apparatus, equipment, Fixtures and Fittings or services and so cannot verify that they are in working order or fit for the purpose. A Buyer is advised to obtain verification from their Solicitor or Surveyor.