



Fairway Road | | Shepshed | LE12 9DS
Asking price £299,000



Fairway Road |
Shepshed | LE12 9DS
Asking price £299,000

**** NO CHAIN - OPEN TO OFFERS ****

Set in a desirable and much sought after part of Shepshed, this detached house occupies a generous garden plot with a long driveway frontage, garage and garden. The house offers three bedrooms, lounge and dining room, along with breakfast kitchen and conservatory. There is exciting further potential for the property, ideal for young families or discerning purchasers looking to downsize. There is gas central heating, double glazing and the house is offered with no upward chain.

Detached House	Generous Garden Plot
Long Driveway Frontage	Exciting Further Potential
Sought After Position	No Upward Chain
Three Bedrooms	Lounge and Dining Room
Breakfast Kitchen and Conservatory	Garage and Driveway

Entrance Hallway

A spacious hallway with staircase rising to the first floor.

W/c

Fitted with a two piece suite comprising low level flush w/c and wash hand basin.

Lounge

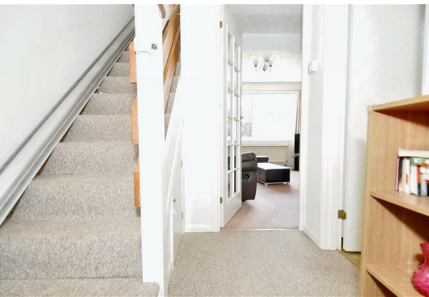
A spacious lounge with window to the rear overlooking the garden.

Dining Room

with ample space for dining table and chairs and a sliding door leads to the conservatory.



"Set in a desirable and sought after area"



Conservatory

A Upvc conservatory overlooking the lovely garden.

Kitchen

Fitted with an ample range of wall and base mounted units, with laminate worktops, sink unit and drainer, window to the front and a door to the side leading to the driveway.

First Floor Landing

With access to -

Bedroom 1

A good sized double room, with window to the rear and a mirrored sliding door wardrobe, with a skylight window, providing extra space with further potential.

Bedroom 2

A spacious double bedroom with window to the front.

Bedroom 3

Currently used as a tv room, with window to the rear and ample space for bed.

Bathroom

Fitted with a three piece suite comprising low level flush w/c, wash hand basin and bath with shower over, and a window to the rear.

Outside

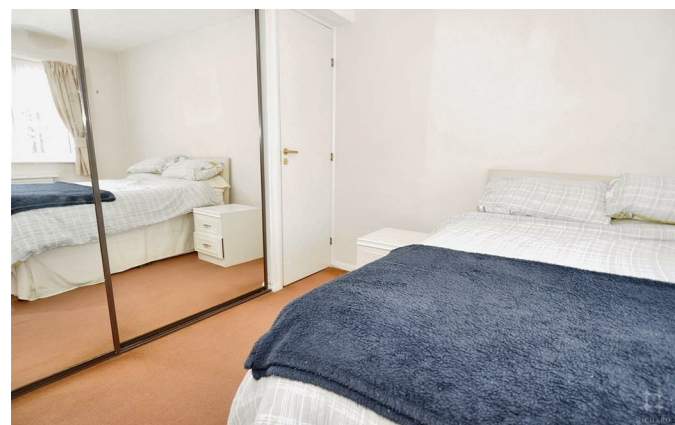
Featuring a lovely long driveway frontage and low maintenance garden, with a single garage, gate to the rear and a rear garden which is well maintained with an array of planted borders, patio and lawn.

The Area

The small town of Shepshed offers a vast range of shops, pubs, cafes and schooling, with many recreational activities and a vibrant village like community. The placement of Shepshed makes it an excellent choice for commuters, with instant access to the M1 and also the A512 towards the A42/M42. There is a recently added Aldi supermarket and McDonalds at the end of the road, making this an ideal area for young families and those wishing to be close to amenities.

Extra Information

To check the Internet and Mobile coverage you can use the following link: https://checker.ofcom.org.uk/en_gb/broadband-coverage



To check any Flood Risks you can use the following link: <https://check-long-term-flood-risk.service.gov.uk/postcode>

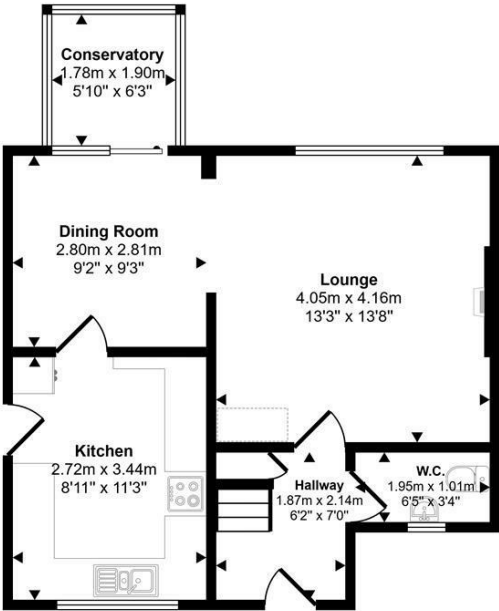


"Close to local shops, schools and amenities"





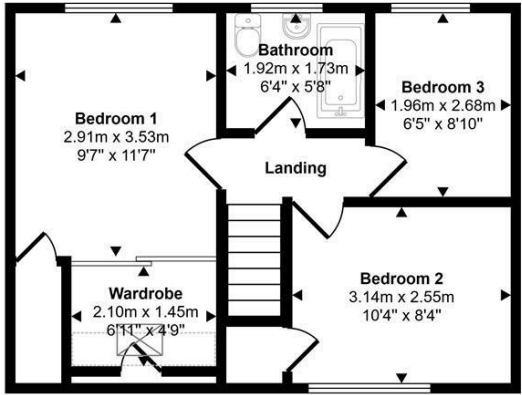
Approx Gross Internal Area
84 sq m / 905 sq ft



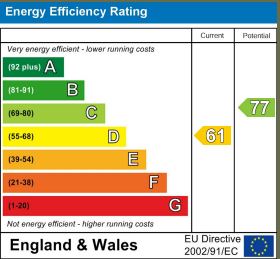
Ground Floor
Approx 46 sq m / 492 sq ft

Denotes head height below 1.5m

This floorplan is only for illustrative purposes and is not to scale. Measurements of rooms, doors, windows, and any items are approximate and no responsibility is taken for any error, omission or mis-statement. Icons of items such as bathroom suites are representations only and may not look like the real items. Made with Made Snappy 360.



First Floor
Approx 38 sq m / 413 sq ft



16 Churchgate
Loughborough
Leicestershire
LE11 1UD
01509 977 889
sales@richard-harrison.co.uk