



Round House Farm Kings Lane, Stratford-Upon-Avon, Offers Over £2,750,000

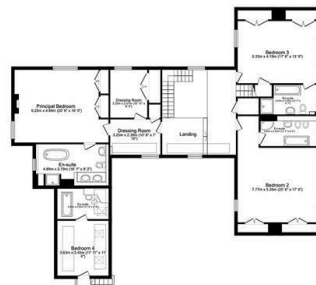
- 6.8 acres of land
- 6/7 bedrooms
- Excellent location with an abundance of transport links
- Beautiful elevated position
- Stables, Double Garage and Annexe
- Undulating countryside views
- Set behind private, electric gates

Round House Farm, Stratford-upon-Avon, CV37 0QZ

Total floor area: 634.3 sq.m. (6,827 sq.ft.)



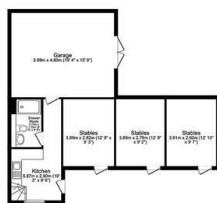
Ground Floor
Floor area 228.9 sq.m. (2,464 sq.ft.)



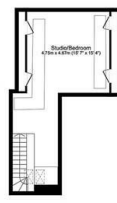
First Floor
Floor area 195.8 sq.m. (2,107 sq.ft.)



Second Floor
Floor area 52.5 sq.m. (565 sq.ft.)



Annex Ground Floor
Floor area 81.8 sq.m. (880 sq.ft.)

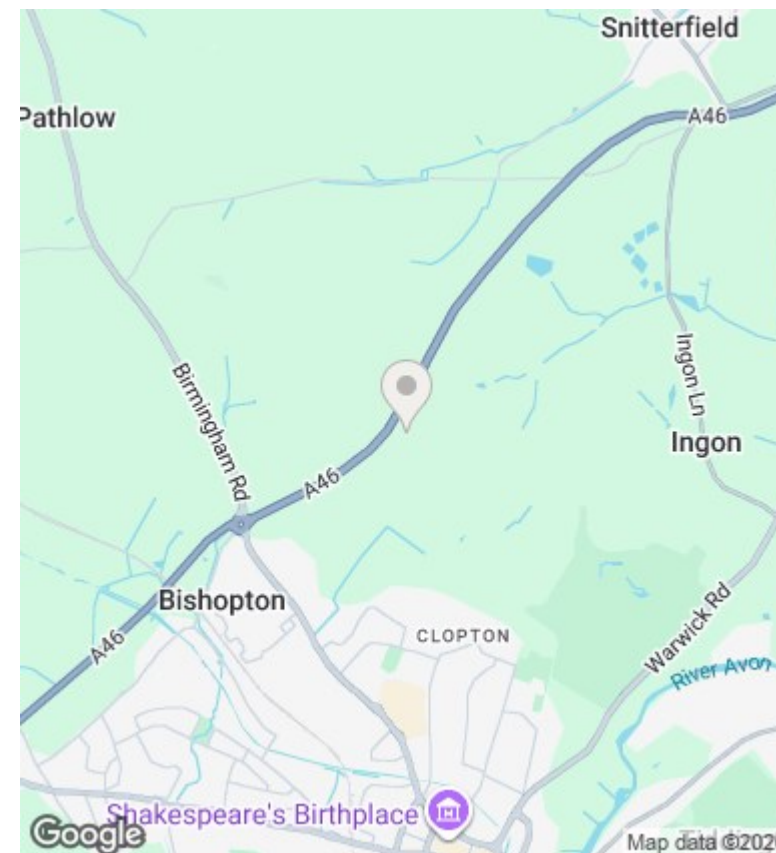


Annex First Floor
Floor area 37.9 sq.m. (408 sq.ft.)



Garage
Floor area 37.4 sq.m. (403 sq.ft.)

This floor plan is for illustrative purposes only. It is not drawn to scale. Any measurements, floor areas (including any total floor area), openings and orientations are approximate. No details are guaranteed. They cannot be relied upon for any purpose and do not form any part of any agreement. No liability is taken for any error, omission or misstatement. A party must rely upon its own inspection(s).



Directions

Viewings

Viewings by arrangement only. Call 01564 332550 to make an appointment.

Council Tax Band

H

EPC Rating:

C

Energy Efficiency Rating		
	Current	Potential
Very energy efficient - lower running costs		
(92 plus) A		
(81-91) B		
(69-80) C	70	75
(55-68) D		
(39-54) E		
(21-38) F		
(1-20) G		
Not energy efficient - higher running costs		
England & Wales	EU Directive 2002/91/EC	