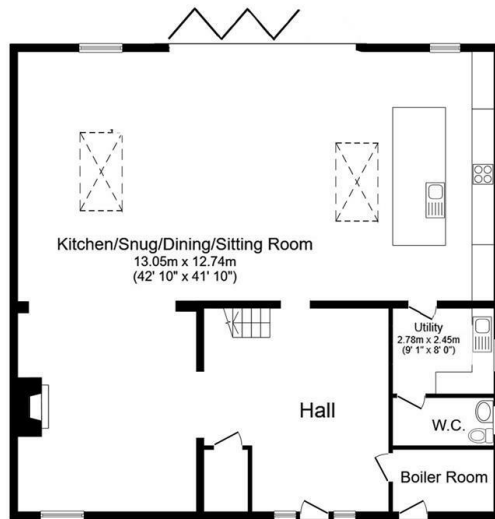


2 Somerfield Barns Tamworth Road, Cliff, Tamworth,
£2,200 Per Month

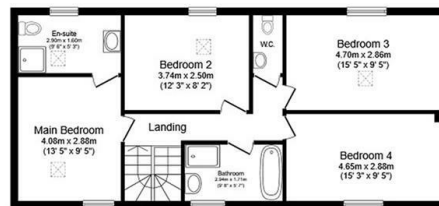
Somerfield Barns, Tamworth Road, Tamworth, B78 2DS

Total floor area: 235.6 sq.m. (2,536 sq.ft.)



Ground Floor

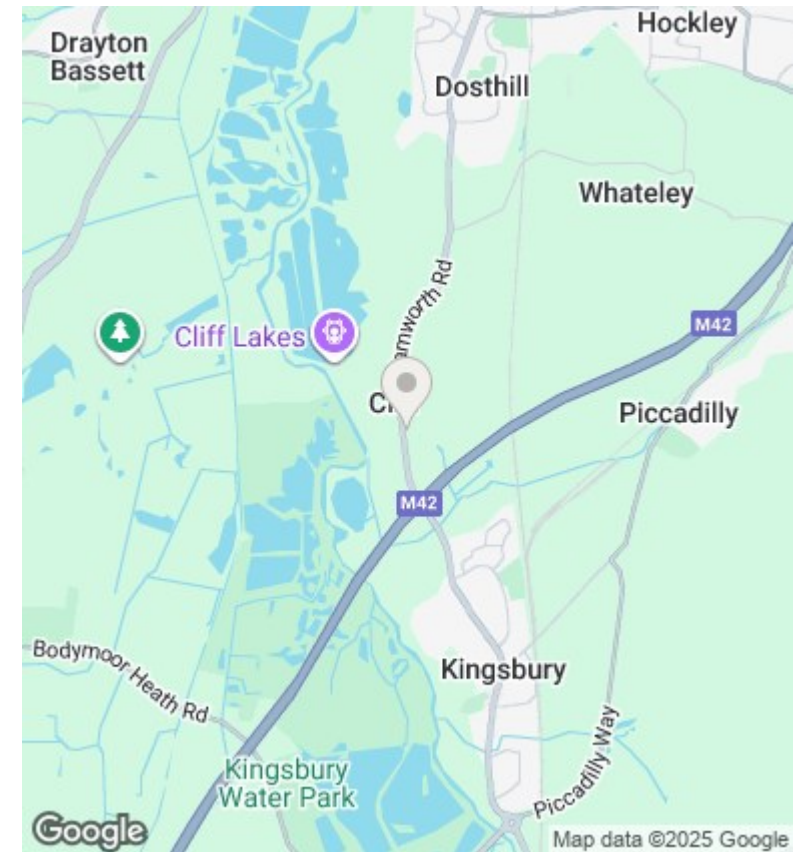
Floor area 164.6 sq.m. (1,771 sq.ft.)



First Floor

Floor area 71.0 sq.m. (765 sq.ft.)

This floor plan is for illustrative purposes only. It is not drawn to scale. Any measurements, floor areas (including any total floor area), openings and orientations are approximate. No details are guaranteed, they cannot be relied upon for any purpose and do not form any part of any agreement. No liability is taken for any error, omission or misstatement. A party must rely upon its own inspection(s).



Directions

Viewings

Viewings by arrangement only. Call 01564 332550 to make an appointment.

Council Tax Band

F

EPC Rating:

C

Energy Efficiency Rating		
	Current	Potential
Very energy efficient - lower running costs		
(92-plus) A		
(81-91) B		
(69-80) C	77	79
(55-68) D		
(39-54) E		
(21-38) F		
(1-20) G		
Not energy efficient - higher running costs		
England & Wales	EU Directive 2002/91/EC	