



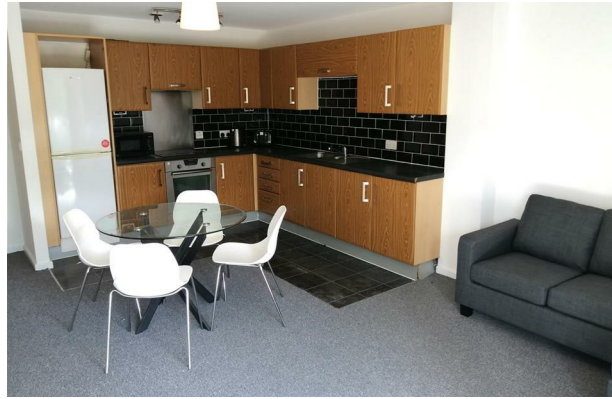
The Cube | Manchester | M11 4DB

£1,150 PCM

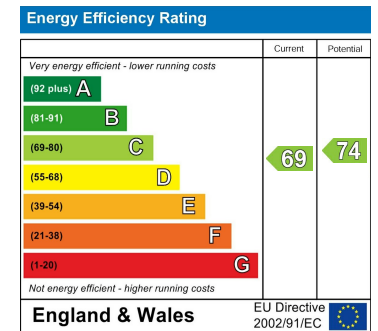
The
**GOOD
ESTATE**
AGENCY

The Cube | 2B The Waterfront,
Sportcity
Manchester | M11 4DB

2 BED, FURNISHED WITH PARKING. Newly refurbished. An excellent, spacious two bedroom apartment on the 1st floor of the popular The Waterfront development, also known as The Cube, Sportcity. The property comprises: entrance hall, storage cupboard, spacious living and dining room through to fitted kitchen and large balcony, master bedroom, second double bedroom and house bathroom. Further benefits include intercom, lift access, open views towards the city centre and secure, gated parking. Located opposite The Etihad Stadium, next to the Asda retail park, providing easy access to the inner ring road and on the tram route to the city centre.



- TWO BEDROOM APARTMENT
- SPACIOUS OPEN PLAN LIVING & DINING ROOM
- 1ST FLOOR
- FURNISHED
- INTERCOM
- BATHROOM
- FITTED KITCHEN
- LARGE BALCONY
- SECURE GATED PARKING
- SPORTCITY LOCATION



68 Quay Street
Manchester
M3 3EJ
0161 513 2034
hello@thegea.co.uk
www.thegea.co.uk