



14 St. Marys Parsonage | Manchester | M3 2DE

£12,000 PCM

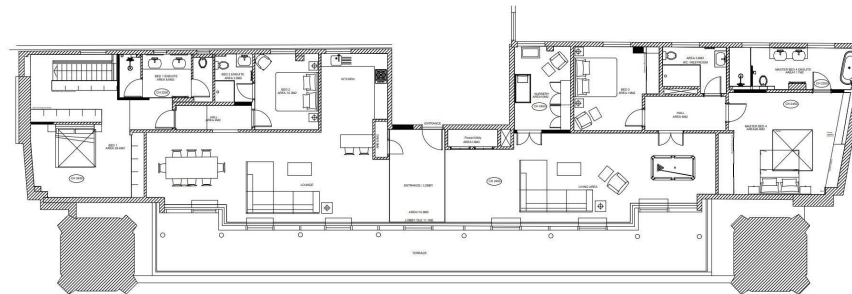
The
**GOOD
ESTATE**
AGENCY

14 St. Marys Parsonage |
 Manchester | M3 2DE
 £12,000 PCM



"THE PENTHOUSE", CENTURY BUILDINGS. 5 BED PENTHOUSE, FURNISHED WITH TWO PARKING SPACES. A stunning, five bedroom penthouse apartment in Manchester's most prestigious residential development, Century Buildings. Located opposite the tranquil Parsonage Gardens on the banks of the River Irwell, only a short walk to the city's main street Deansgate with all the shops, department stores, bars and restaurants the city centre has to offer.

- PENTHOUSE APARTMENT
- 1,000 SQ FT ROOFTOP TERRACE
- OVER 3,400 SQ FT OF INTERNAL LIVING SPACE
- STUNNING CITY CENTRE VIEWS
- 2 VALET PARKING SPACES
- FIVE DOUBLE BEDROOMS
- SEVENTH FLOOR
- FOUR BATHROOMS INCLUDING THREE EN SUITES
- EXTREMELY SECURE BUILDING WITH 24/7 CONCIERGE
- EXCELLENT CENTRAL LOCATION



Energy Efficiency Rating		Current	Potential
<i>Very energy efficient - lower running costs</i>			
(92 plus)	A		
(81-91)	B		
(69-80)	C	73	75
(55-68)	D		
(39-54)	E		
(21-38)	F		
(1-20)	G		
<i>Not energy efficient - higher running costs</i>			
England & Wales		EU Directive 2002/91/EC	

68 Quay Street
 Manchester
 M3 3EJ
 0161 513 2034
 hello@thegea.co.uk
 www.thegea.co.uk