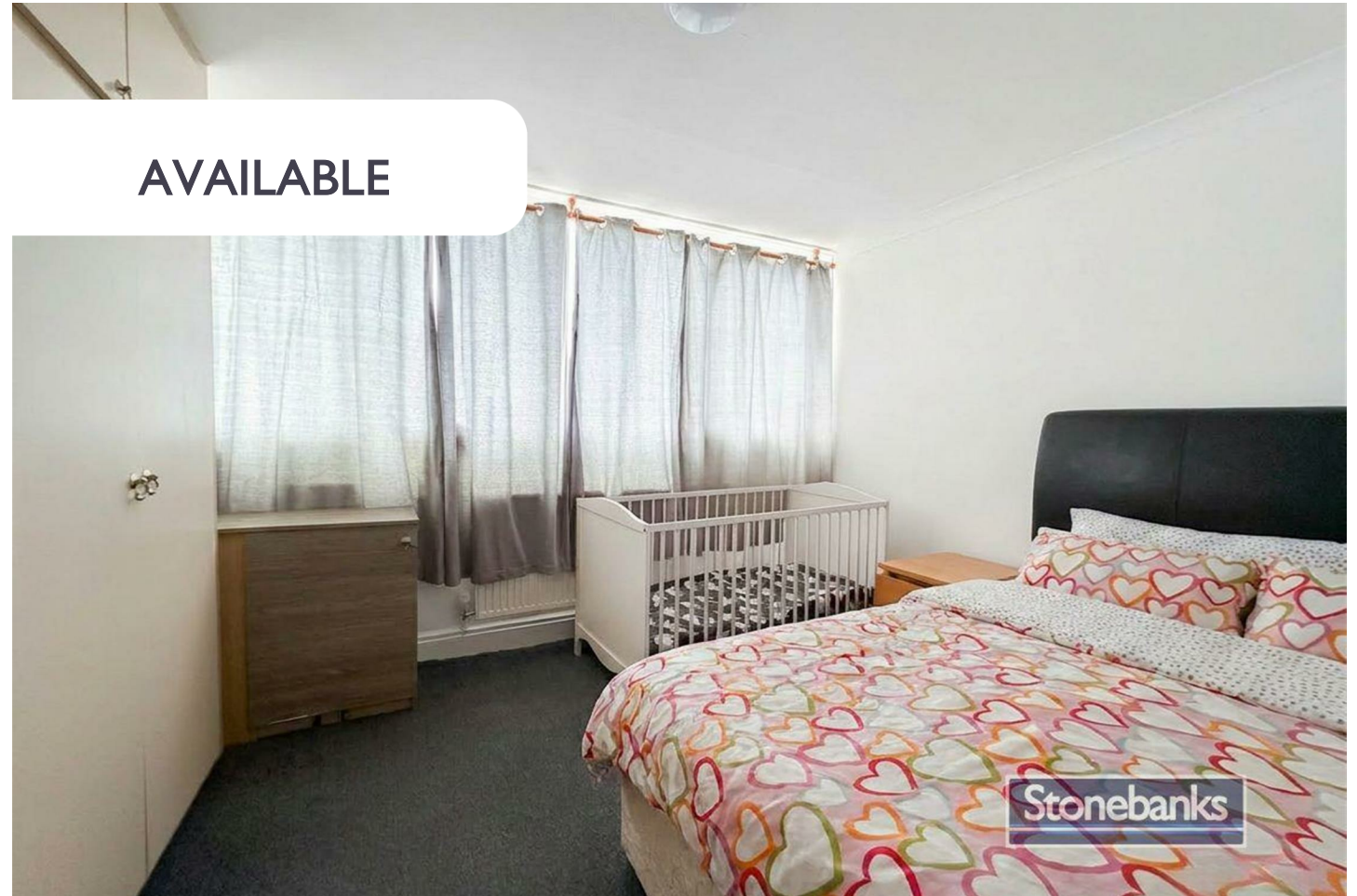


AVAILABLE



HOUSE - TERRACED (EPC RATING: C)

HERITAGE CLOSE, UXBRIDGE, UB8 2LA

PER MONTH

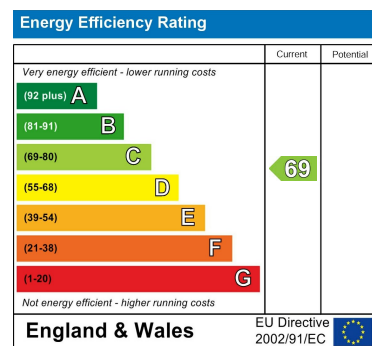
£4,000 PER MONTH



Council Tax Band

D

Energy Performance Graph



Call us on

02078460308

info@stonebanks.co.uk

www.stonebanks.co.uk

Agents Note: Whilst every care has been taken to prepare these particulars, they are for guidance purposes only. All measurements are approximate and are for general guidance purposes only and whilst every care has been taken to ensure their accuracy, they should not be relied upon and potential buyers are advised to recheck the measurements.



4 Bedroom House - Terraced located in Uxbridge

Spacious 6-Bedroom HMO Property Available – Ideal for Student Group – UB8 2LA

A well-presented and fully licensed 6-bedroom HMO property located in the heart of Uxbridge, ideally suited for a group of students. Situated within close proximity to Brunel University, local shops, transport links, and amenities, this spacious home offers comfortable and convenient shared living.

The property comprises five generously sized bedrooms, a fully fitted kitchen with dining space, communal living area, multiple bathrooms, and a private rear garden. The house benefits from double glazing, gas central heating, and ample storage throughout.

This property already holds a valid HMO licence, making it perfectly set up for student accommodation or professional sharers. The landlord's preference is for a group of students looking for a clean, well-maintained home in a popular student area.

Key Features:

- 6 spacious bedrooms

