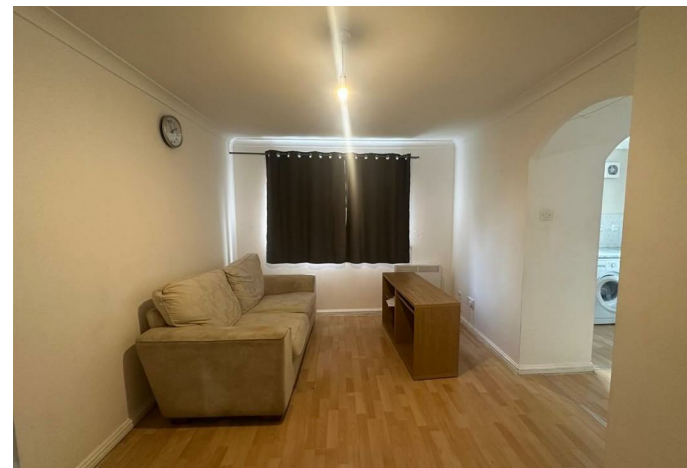


AVAILABLE



APARTMENT (EPC RATING:)

DEHAVILLAND CLOSE, NORTHOLT, UB5

6RZ,
PER MONTH

£1,400 PER MONTH

Council Tax Band

B

Energy Performance Graph

Energy Efficiency Rating		Current	Potential
Very energy efficient - lower running costs			
(92 plus) A			
(81-91) B			
(69-80) C			
(55-68) D			
(39-54) E			
(21-38) F			
(1-20) G			
Not energy efficient - higher running costs			
England & Wales		EU Directive 2002/91/EC	

Call us on

02078460308

info@stonebanks.co.uk

www.stonebanks.co.uk

Agents Note: Whilst every care has been taken to prepare these particulars, they are for guidance purposes only. All measurements are approximate and are for general guidance purposes only and whilst every care has been taken to ensure their accuracy, they should not be relied upon and potential buyers are advised to recheck the measurements.



I Bedroom Apartment located in Northolt

Stonebanks Estates are pleased to present this well-maintained one-bedroom ground floor flat situated in a quiet residential area. The property features a bright living room, a separate fully fitted kitchen, a modern bathroom, and a spacious double bedroom.

Additional benefits include allocated parking space and close proximity to local shops, schools, and excellent transport links, providing convenient living for a professional couple or single occupant.

Available now

