

Pirbright Road, SW18

Approximate gross internal area  
47.38 sq m / 510 sq ft



Key:  
CH - Ceiling Height



Ground Floor

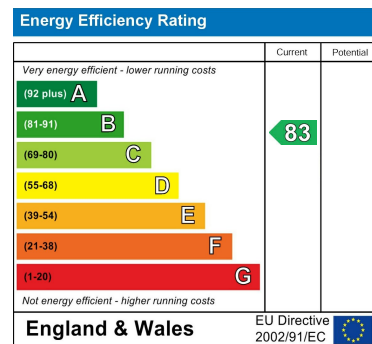
Approximate gross internal area: 47.38 sq m / 510 sq ft. All measurements are approximate and for guidance only.



Council Tax Band

B

Energy Performance Graph



Call us on

02078460308

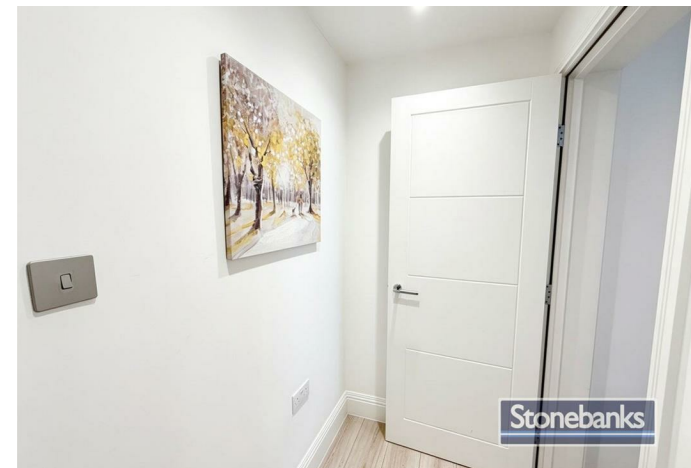
info@stonebanks.co.uk

www.stonebanks.co.uk

Agents Note: Whilst every care has been taken to prepare these particulars, they are for guidance purposes only. All measurements are approximate and are for general guidance purposes only and whilst every care has been taken to ensure their accuracy, they should not be relied upon and potential buyers are advised to recheck the measurements.



FREEHOLDNULL



NOT SPECIFIED (EPC RATING: B)

PIRBRIGHT ROAD, LONDON, SW18 5NA

£525,000



# 1 Bedroom Not specified located in London

Stylish Two-Bedroom Freehold Home with Balcony & Park Views

A beautifully presented and thoughtfully designed two-bedroom, two-bathroom semi-detached freehold home, positioned directly opposite Coronation Gardens and just moments from Southfields Station.

The property offers approximately 566 sq ft / 52 sq m of well-planned living space, finished with a modern and contemporary feel throughout. The bright open-plan reception, dining and kitchen area creates a welcoming space for relaxing or entertaining, while doors lead out to a private balcony overlooking the park, giving the home a lovely sense of light and openness.

Arranged over multiple levels, the property features two double bedrooms, each served by a stylish modern bathroom, making it ideal for professionals, first-time buyers, downsizers or investors looking for a turnkey home in a highly desirable location.

Perfectly located for access to local shops, cafés, schools and green spaces, the home is also just 420m from Southfields Underground Station, offering excellent District Line connections into Central London.

Key Features:

