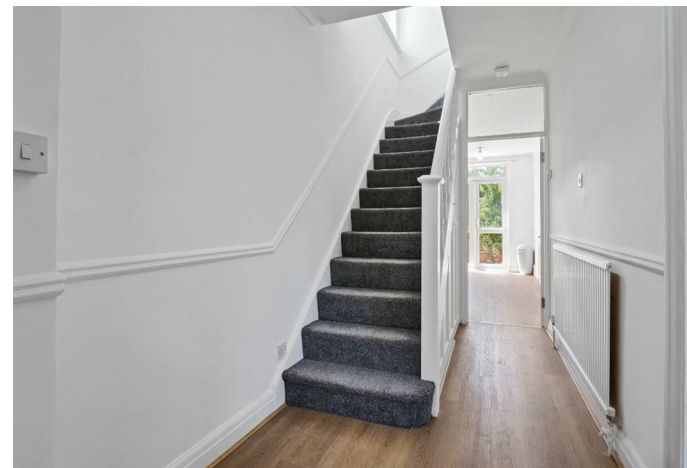


AVAILABLE



HOUSE SHARE (EPC RATING: D)

42 SOUTH VALE, HARROW, HA1 3PH

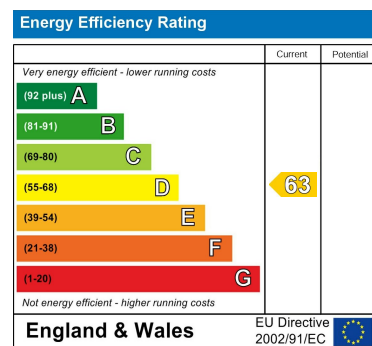
PER MONTH

£750 PER MONTH

Council Tax Band

A

Energy Performance Graph



Call us on

02078460308

info@stonebanks.co.uk

www.stonebanks.co.uk

Agents Note: Whilst every care has been taken to prepare these particulars, they are for guidance purposes only. All measurements are approximate and are for general guidance purposes only and whilst every care has been taken to ensure their accuracy, they should not be relied upon and potential buyers are advised to recheck the measurements.



# Full Bedroom House Share located in Harrow

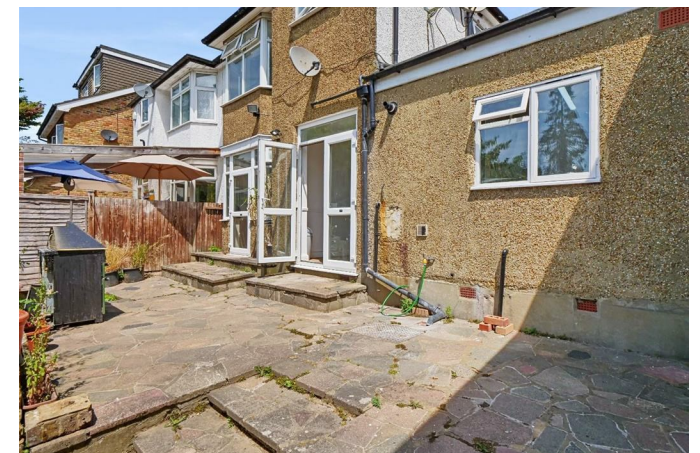
All Bills included

We are extremely excited to present this new luxury refurbished 6 bedroom house in the heart of Sudbury Hill within walking distance to Sudbury Hill Station.

- \* All bills included
- \* High speed broadband
- \* Garden
- \* Driveway
- \* Modern kitchen

Location

Bedrooms



Stonebanks | 22a Northfield Avenue, Ealing, London, W13 9RL

Stonebanks | 22a Northfield Avenue, Ealing, London, W13 9RL