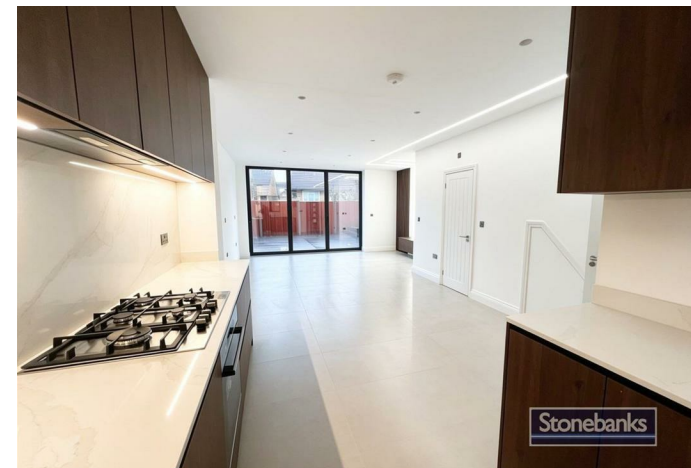


AVAILABLE



HOUSE - END TERRACE (EPC RATING: B)

VEER DRIVE, HARROW, HA1 4WR

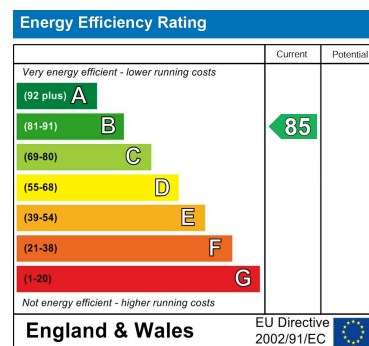
PER MONTH

£7,500 PER MONTH

Council Tax Band

C

Energy Performance Graph



Call us on

02078460308

info@stonebanks.co.uk

www.stonebanks.co.uk

Agents Note: Whilst every care has been taken to prepare these particulars, they are for guidance purposes only. All measurements are approximate and are for general guidance purposes only and whilst every care has been taken to ensure their accuracy, they should not be relied upon and potential buyers are advised to recheck the measurements.



4 Bedroom House - End Terrace located in Harrow

Exceptional Investment Opportunity – Five Stunning Detached Houses

Price on application

An outstanding opportunity to acquire a unique development comprising five spacious and beautifully presented houses, each offering generous family accommodation and excellent investment potential.

Every property features:

- 4 large bedrooms
- 3 modern bathrooms
- Open-plan kitchen and living area
- Private rear garden
- Bright and spacious interiors throughout

