



APARTMENT (EPC RATING: D)

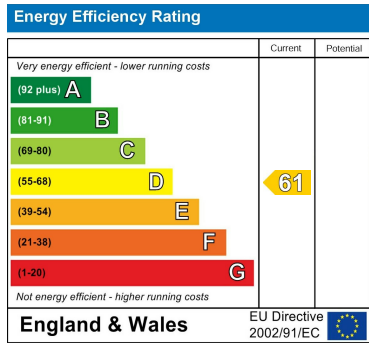
**FLAT 29 STEEPLE CHASE COURT,
NORTHOLT, UB5 4FG
PER MONTH**

£1,900 PER MONTH

Council Tax Band

C

Energy Performance Graph



Call us on

02078460308

**info@stonebanks.co.uk
www.stonebanks.co.uk**

Agents Note: Whilst every care has been taken to prepare these particulars, they are for guidance purposes only. All measurements are approximate and are for general guidance purposes only and whilst every care has been taken to ensure their accuracy, they should not be relied upon and potential buyers are advised to recheck the measurements.



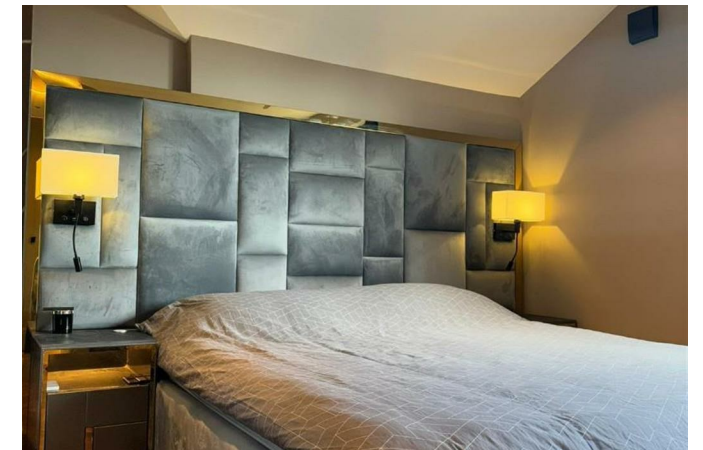
2 Bedroom Apartment located in Northolt

Welcome to this charming apartment located on Harp Island Close in London. This delightful first-floor residence offers a comfortable living space of 581 square feet, making it an ideal choice for individuals or small families seeking a modern home in a tranquil setting.

The apartment features a well-appointed reception room, perfect for relaxation or entertaining guests. With two spacious bedrooms, there is ample room for rest and privacy. The property also includes a contemporary bathroom, designed for both convenience and comfort.

This fully furnished apartment is ready for you to move in immediately, allowing you to settle in without the hassle of purchasing furniture. The purpose-built flats are situated in a peaceful cul-de-sac, providing a serene environment away from the hustle and bustle of city life while still being conveniently located for easy access to local amenities and transport links.

Whether you are looking to rent or buy, this property presents a wonderful opportunity to enjoy modern living in a desirable area of London. Don't miss your chance to make this lovely apartment your new home. Available now, it awaits your personal touch.



Stonebanks | 22a Northfield Avenue, Ealing, London, W13 9RL

Stonebanks | 22a Northfield Avenue, Ealing, London, W13 9RL