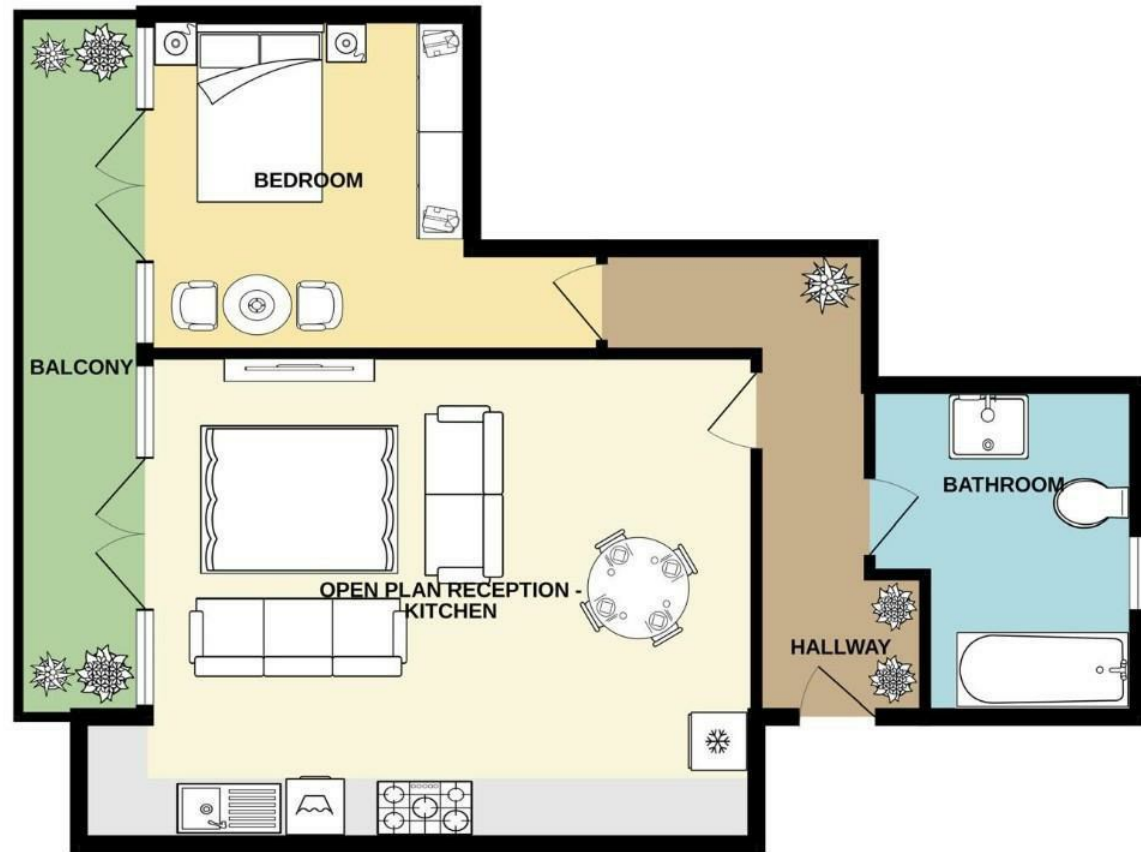


GROUND FLOOR
643 sq.ft. (59.8 sq.m.) approx.



TOTAL FLOOR AREA: 643 sq.ft. (59.8 sq.m.) approx.
Whilst every attempt has been made to ensure the accuracy of the floorplan contained here, measurements of doors, windows, rooms and any other items are approximate and no responsibility is taken for any error, omission or mis-statement. This plan is for illustrative purposes only and should be used as such by any prospective purchaser. The services, systems and appliances shown have not been tested and no guarantee as to their operability or efficiency can be given.
Made with Metropix ©2023

Council Tax Band

New Build

Energy Performance Graph

Energy Efficiency Rating		Current	Potential
Very energy efficient - lower running costs			
(92 plus) A			
(81-91) B			
(69-80) C			
(55-68) D			
(39-54) E			
(21-38) F			
(1-20) G			
Not energy efficient - higher running costs			
England & Wales		EU Directive 2002/91/EC	

Call us on

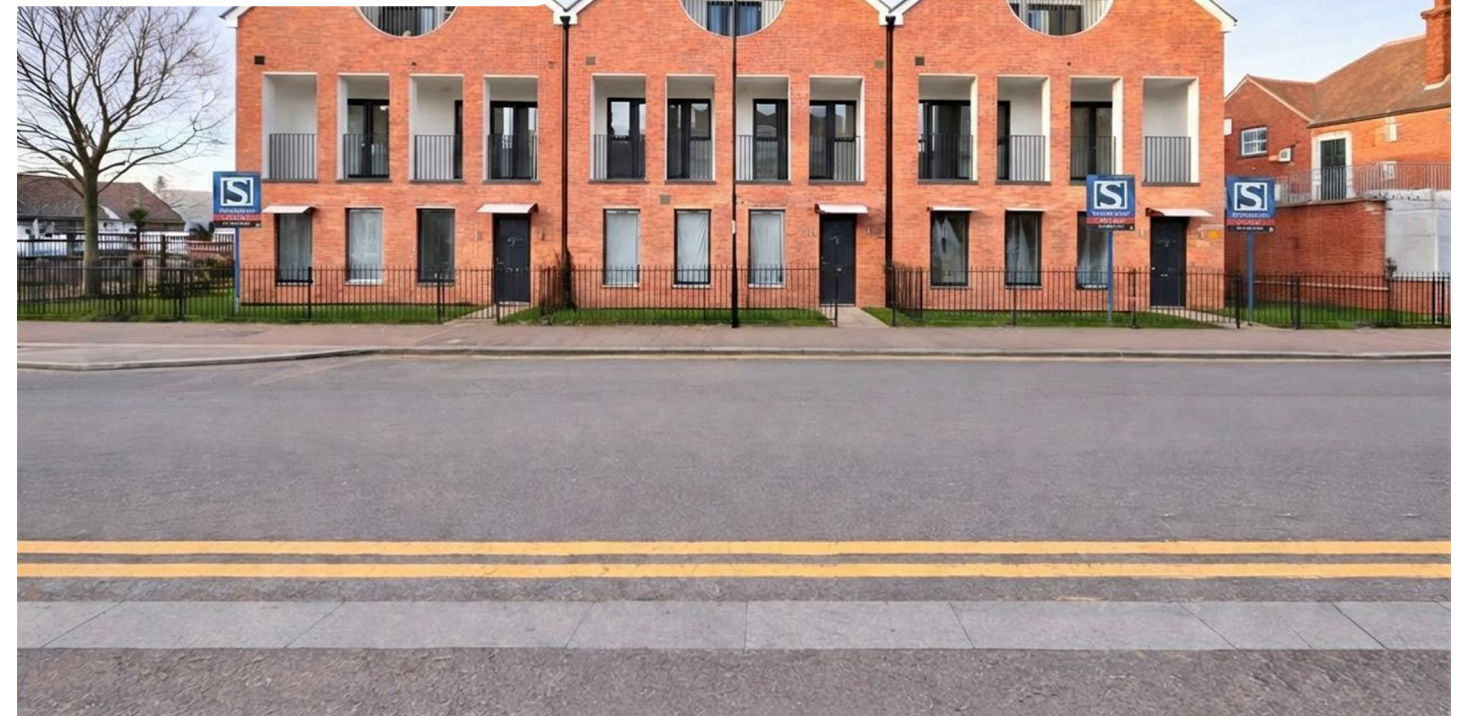
02078460308

info@stonebanks.co.uk

www.stonebanks.co.uk

Agents Note: Whilst every care has been taken to prepare these particulars, they are for guidance purposes only. All measurements are approximate and are for general guidance purposes only and whilst every care has been taken to ensure their accuracy, they should not be relied upon and potential buyers are advised to recheck the measurements.

LET AGREED



BLOCK OF FLATS (EPC RATING:)

HIGH STREET, ENFIELD, EN3 4SA

PER MONTH

£21,000 PER MONTH



Full Bedroom Block of Flats located in Enfield

Stonebanks are pleased to present a rare opportunity to rent an entire block of 9 self-contained apartments, ideally located on Enfield High Street (EN3) in a strong rental demand area of North London.

The building comprises a well-balanced mix of 1, 2 and 3-bedroom apartments, offering spacious layouts and modern living, with shops, restaurants and amenities directly on the doorstep.

Property Breakdown:

- 3 × 1 Bedroom Apartments
- 2 × 2 Bedroom Apartments
- 4 × 3 Bedroom Apartments

Key Features:

- Entire Residential Block Available

