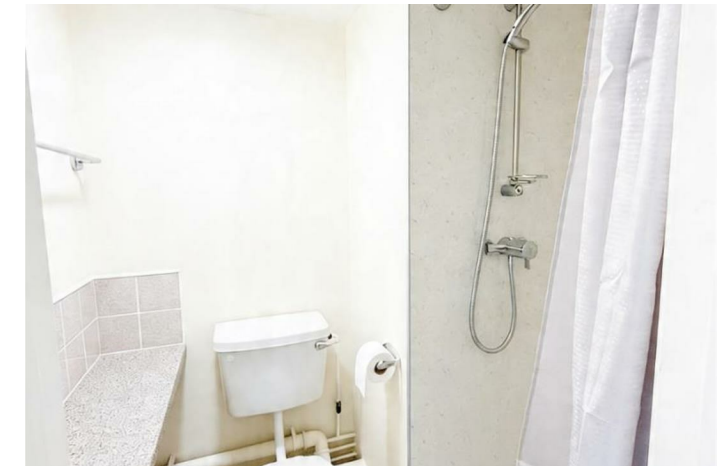
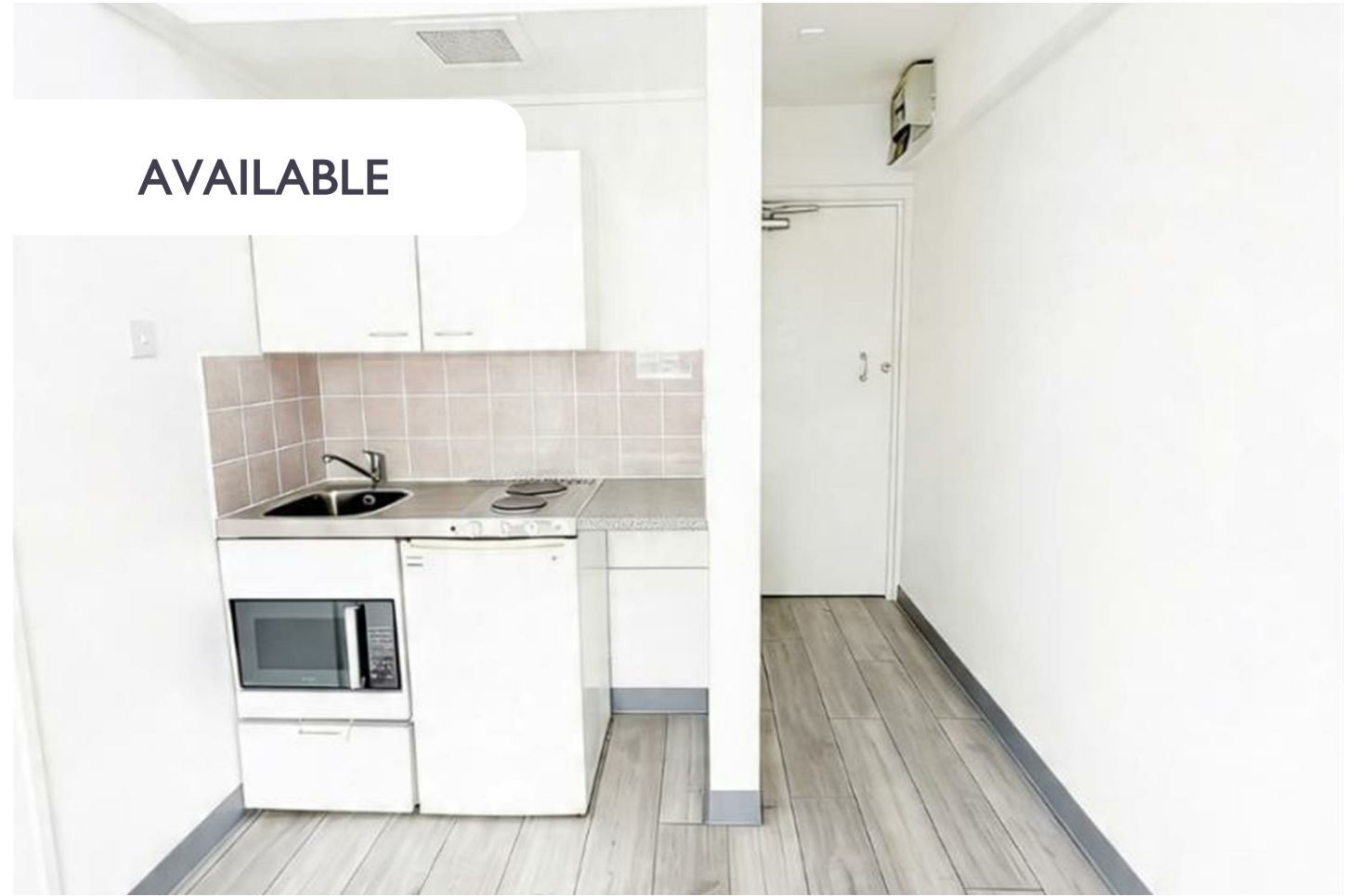


AVAILABLE



BLOCK OF FLATS (EPC RATING:)

THE FOYER, SLOUGH, SL2 5AW

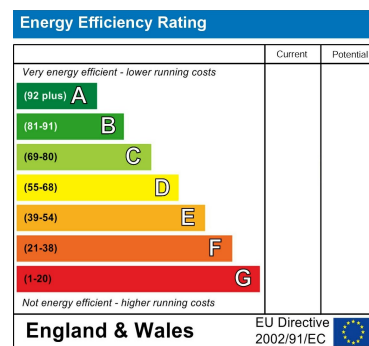
PER MONTH

£950 PER MONTH

Council Tax Band

A

Energy Performance Graph



Call us on

02078460308

info@stonebanks.co.uk

www.stonebanks.co.uk

Agents Note: Whilst every care has been taken to prepare these particulars, they are for guidance purposes only. All measurements are approximate and are for general guidance purposes only and whilst every care has been taken to ensure their accuracy, they should not be relied upon and potential buyers are advised to recheck the measurements.



0 Bedroom Block of Flats located in Slough

Block of 64 Modern Self-Contained Studios – SL2 5AW – Ready to Move In

A well-presented block comprising 64 self-contained studio apartments located in a desirable and convenient area. Ideal for single professionals, couples, or company let operators seeking comfortable and practical living spaces.

Each studio is maintained to a good standard throughout and features a bright open-plan layout, fitted kitchen, private bathroom, and ample living space. All units are fully self-contained, offering both privacy and independence.

The development is situated in a pleasant location with easy access to local shops, transport links, and essential amenities, making it highly convenient for day-to-day living.

Key Features:

- Block of 64 self-contained studio apartments
- Good specification throughout

