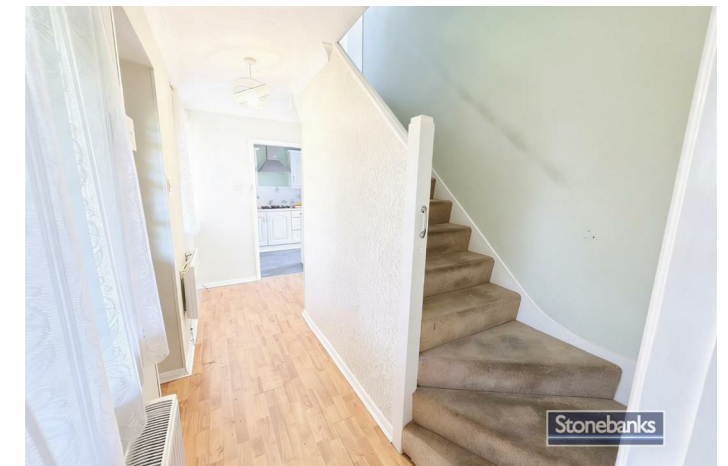


AVAILABLE



HOUSE - SEMI-DETACHED (EPC RATING: C)

SWAN ROAD, FELTHAM, TW13 6ND

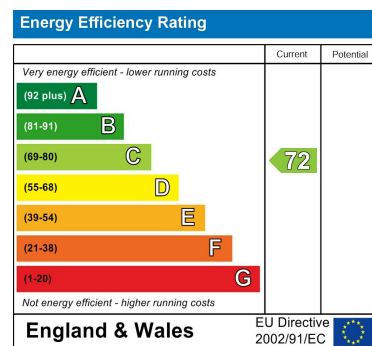
PER MONTH

£3,300 PER MONTH

Council Tax Band

D

Energy Performance Graph



Call us on

02078460308

info@stonebanks.co.uk

www.stonebanks.co.uk

Agents Note: Whilst every care has been taken to prepare these particulars, they are for guidance purposes only. All measurements are approximate and are for general guidance purposes only and whilst every care has been taken to ensure their accuracy, they should not be relied upon and potential buyers are advised to recheck the measurements.



# 4 Bedroom House - Semi-Detached located in Feltham

Spacious 4-Bedroom House to Rent – Swan Road, Feltham, TW13

A well-presented and generously sized four-bedroom home located on Swan Road, Feltham, offering flexible living space ideal for families or professional sharers.

The property comprises four well-proportioned bedrooms, two reception rooms providing ample space for living and entertaining, a fitted kitchen, and one family bathroom. The layout is practical and allows for comfortable day-to-day living.

Further benefits include a private rear garden and on-street parking, along with good natural light throughout the property.

Conveniently situated close to local amenities, schools, and transport links, the property offers easy access to Feltham town centre and surrounding areas.

Available now – enquire today to arrange a viewing.

